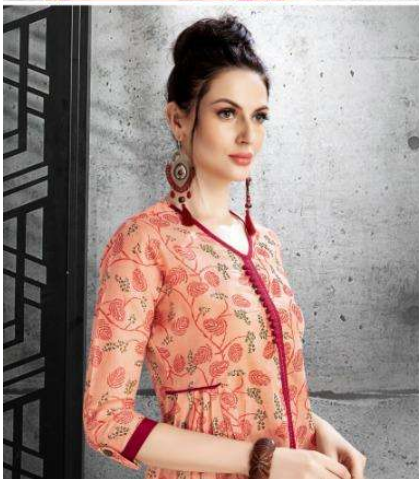




alishka[®]
FASHION



FLORENCE



RELIGIONS

D.no. - 1005

The neighbors and majestic cliffs in the distance. The perfect carpet of the lush, verdant grass. A tiny local atmosphere. And the artist, in the same an integral component of this realm. Welcome to the land of perfection.





The more mention
of the word 'luxury'
shows up behind
images of gardens,
high-fashion-designer
clothing, fashion
shows, Hollywood,
glitzy magazines,
Page 3, and a high
dose of money=real
appeal. It is another fact
that luxury

is much more than just
Fashion. Luxury is a
lifestyle.
and fashion is just a
minor part of it.
Business is the most
valuable or sustainable

CULTURAL

D.no. - 1004



The magnificent and majestic cliffs in the distance. The great embrace of the river. The perfect carpet of the lush, verdant grass. A truly special atmosphere. And the women in the same an integral component of this realm. Welcome to the land of perfection.



D.no. - 1003



MANAGING



The magnificent and majestic cliffs in the distance. The great embrace of the clouds. The perfect carpet of the lush, verdant grass. A truly special atmosphere. And the women in the scene are integral components of this realm. Welcome to the land of perfection.

D.no. - 1002



The magnificent and majestic cliffs, in the distance. The great embrace of the clouds. The perfect carpet of the lush, vibrant grass. A truly special atmosphere. And the women - in this sense, an integral component of the scene. Welcome to the land of perfection.

D.no. - 1001

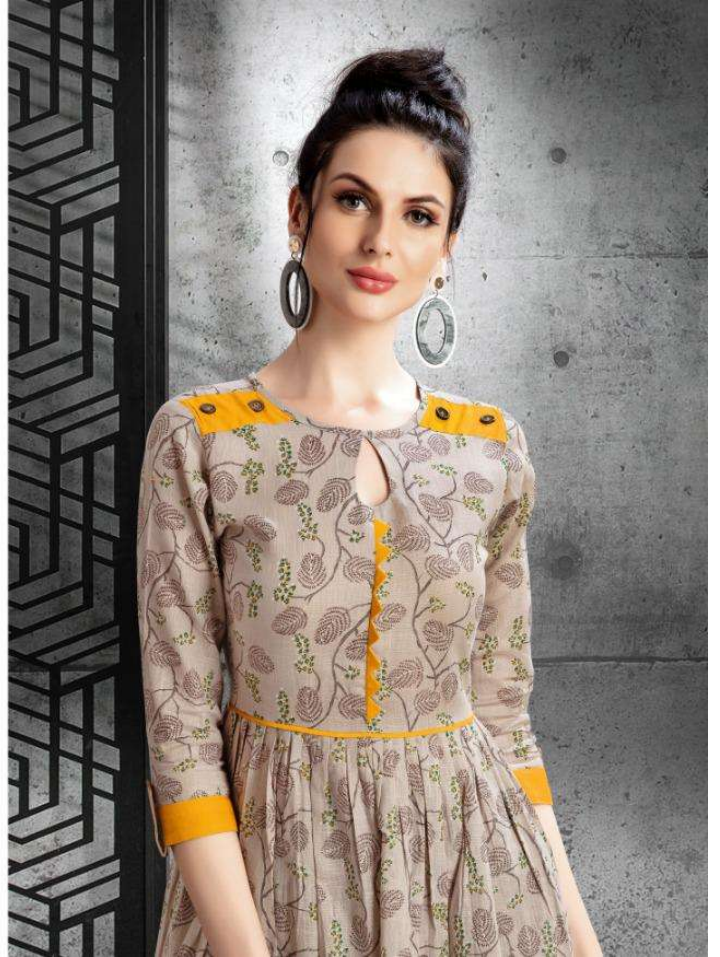
F E E L I N G



The magnificent and majestic cliffs in the distance. The great embrace of the clear. The perfect carpet of the lush, verdant grass. A truly special atmosphere. And the women in the scene an integral component of the scene. Welcome to the land of perfection.



D.no. - 1006





1001



1002



1005



1006



1003



1004

FLORENCE





CATLOGE NAME : FLORENCE

PIECES : 6

FABRICS DETAILS	
FABRIC	COTTON SLUB PRINT
SIZE	M-38",L-40",XL-42",XXL-44
DESIGNS	1001 - 1006