

D.no-205

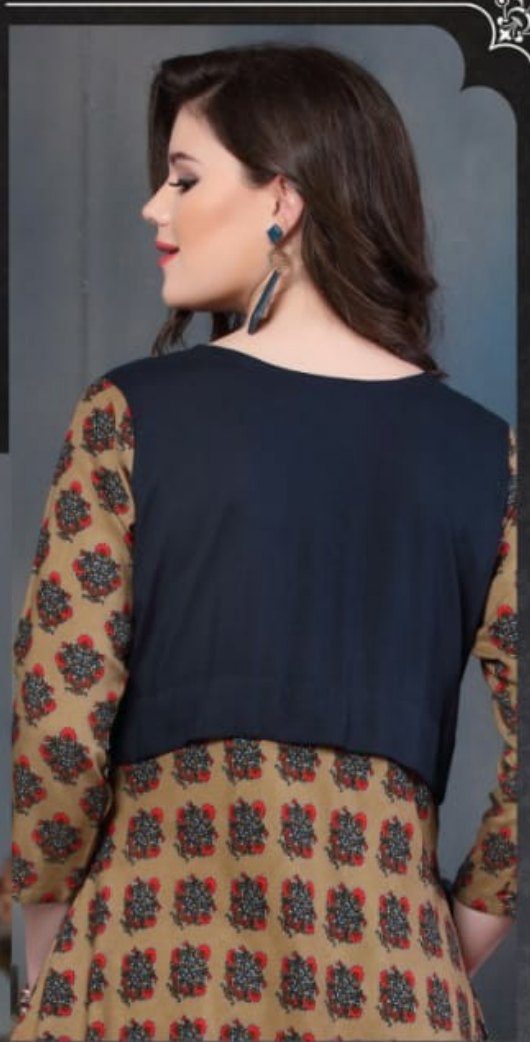


# The Peachy BEWITCHMENT

*Strown with the carress of soft peachy pastels captured with the enigma of silver metallic embroidery, and picketed with spiral motifs - The peachy Bewitchment boasts freshness!*



# The Noble FAY



*Combined with the  
exquisiteness  
of imagination,  
intertwined with  
the threads of destiny  
and whitewashed  
with carefree youth  
The Noble Fay  
Signifies innocence!*

D.no-201



D.no-202



# The Sugarplum LADY

*Sequined with beads of gold and silver, fringed with murals of intricate florals and motifs, and draped in the warm colours of lilies- The Sugarplum lady symbolizes freedom!*



D.no-203

&  
BIM





# The Sky HUES



D.no-204

*Jeweled with the subtle tones of pinky delights, draped with the hues of the tranquil clear sky, and beautified with netted floral wines - The Sky Hues reflects serenity!*



D.no-205



# The Peachy BEWITCHMENT

*Strown with the carress of soft peachy pastels captured  
with the enigma of silver metallic embroidery, and  
picketed with spirul motifs - The peachy Bewitchment  
boasts freshness!*





# The Noble FAY



*Combined with the  
exquisiteness  
of imagination,  
intertwined with  
the threads of destiny  
and whitewashed  
with carefree youth  
The Noble Fay  
Signifies innocence!*

D.no-206







# The Rose PRINCESS

*Adorned with the beauty of natural red rose,  
blanketed with the motifs of floral elegance, and  
intertwined with the fines of embroidery - The  
Rose Princess Celebrates divinity!*

D.no-207





# The Pastel

OLIVE

&  
BXM



*Picked with the brightest reds of the primrose, plucked with the jewels of the floral fields, and hemmed with a delicate deco motif- The olive redress applauds youth!*

D.no-208



# The Enigmatic MONARCH



*Bathed in the purity of light and luminosity, stiped with muted elegance of flowery motifs, and suffused with honour and dignity- The Enigmatic Monarch glorifies femininity!*

**D.no-209**