

Sampann^{nx}

*Our greatest
is not in
but in
every*

S

THE
ROYAL
STORY

A

G



A

*Our greatest glori
not in never
but in rising
time we*



VOL.3

GLAMOROUS SAGA

Colour is the expression of confidence; let your attitude speak!



5301

Sampatti





5302

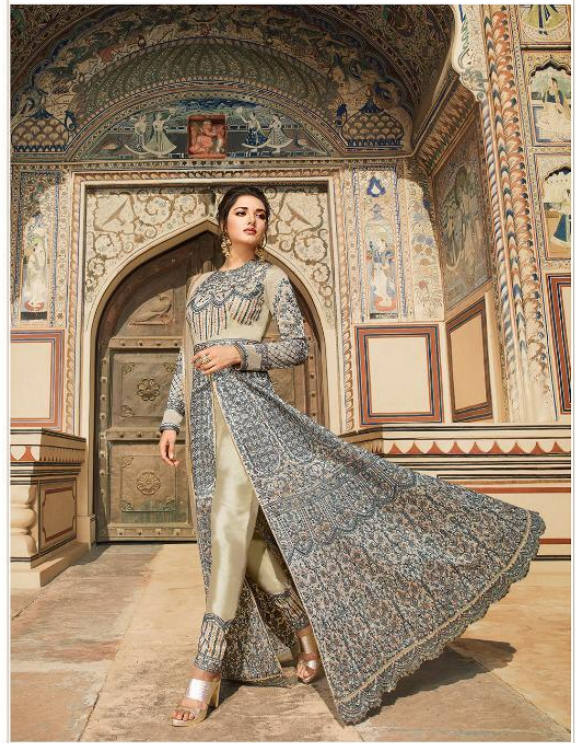
Sampann





MESMERIZING  BLISS

An expression of true luxury inspired by the Royals and colours that are truly bridal.



Sampann 

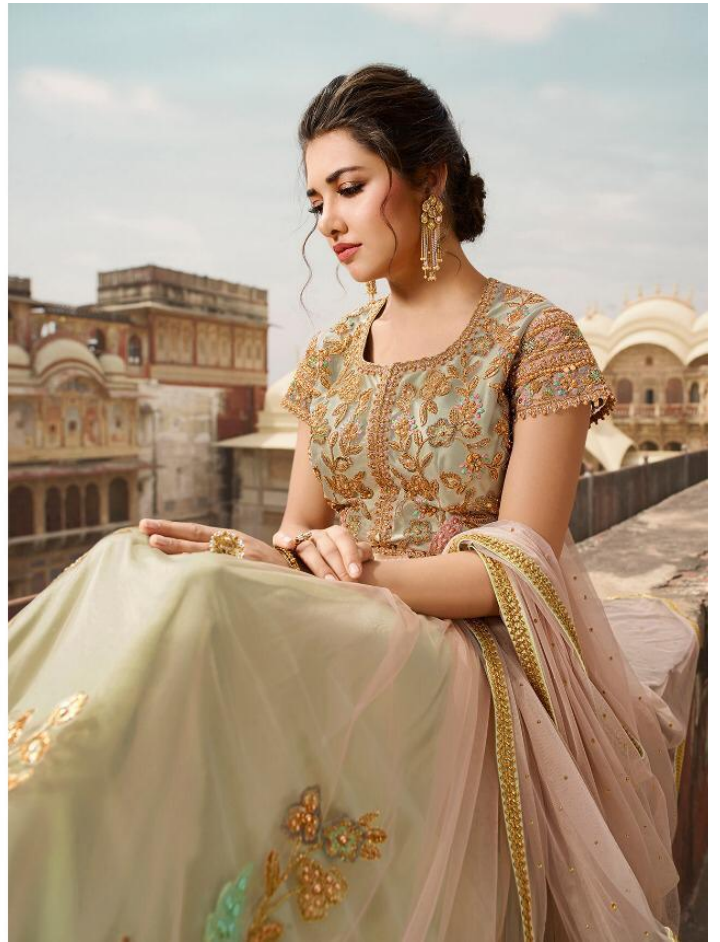
ETERNALLY GRACEFUL

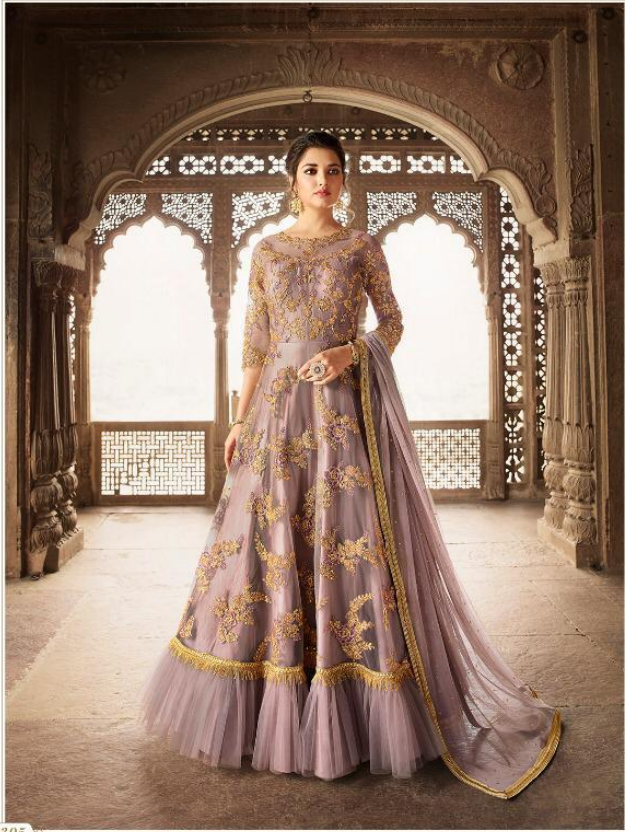
What actually makes you graceful is how amazingly you style your look.



5304

Sampann





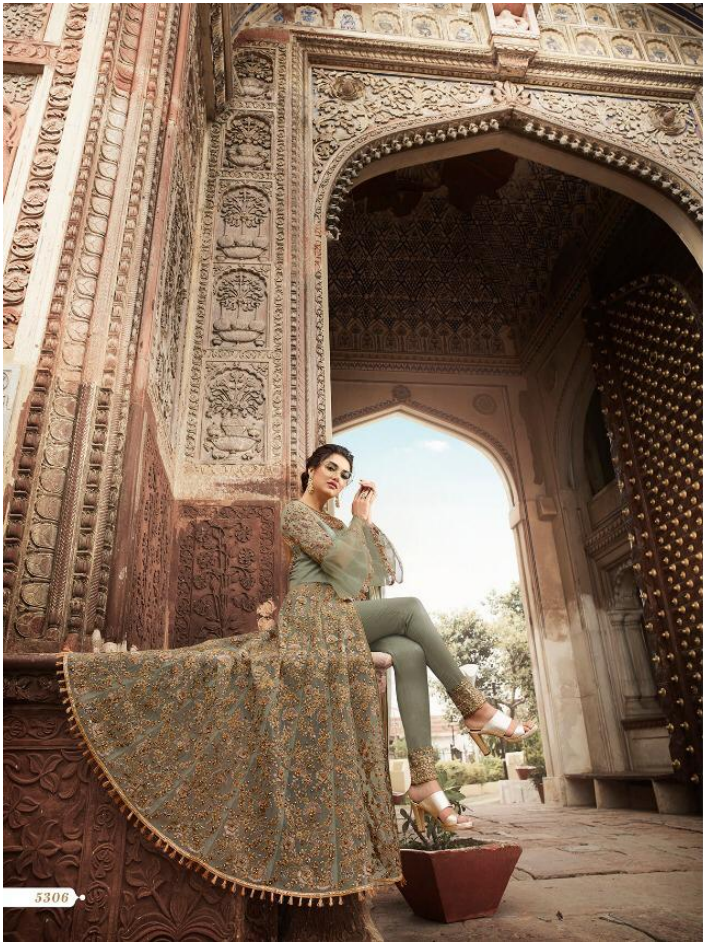
5305

PERFECT FAIRYTALE

A fairytale of emotions, opinions, choices, thoughts, actions and chronicles.



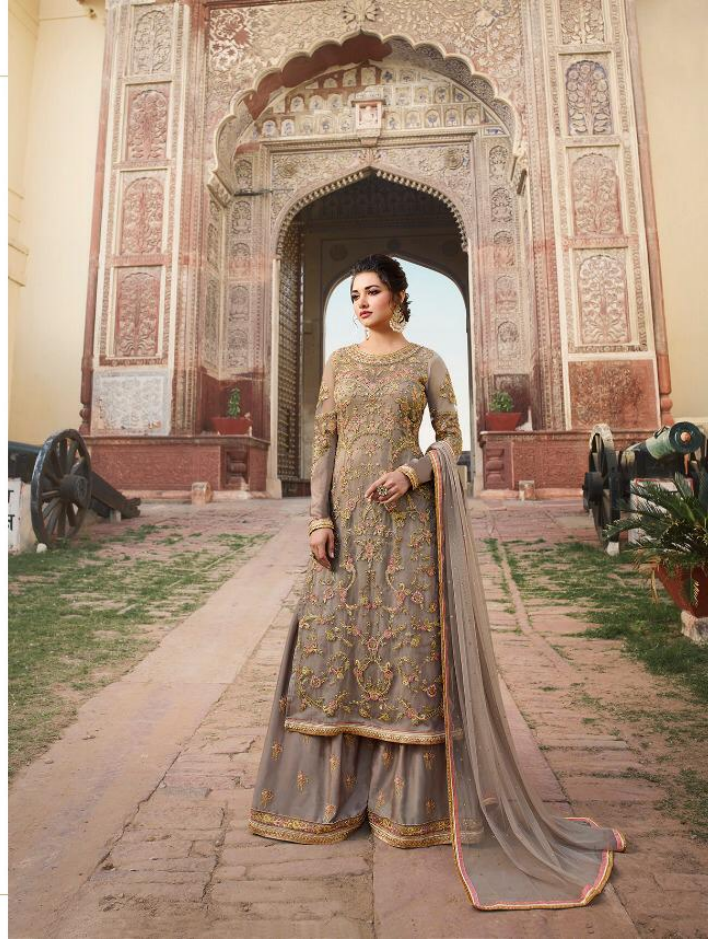
Sampann





5308

Sampann 





5301



5302



5303



5304



5305



5306



5307



5308

SAGA

D.NO	DETAILS	PRICE
5301	THIS SET FEATURES A FABULOUS PEACH & MAROON PARTY WEAR ANARKALI SUIT IN TAFETTA BASE EMBROIDERED WITH CODING, THREAD ,JARI, BADLA, SPARKLE, SEQUINS AND STONE EMBELLISHMENT .IT IS PAIRED WITH MAROON LEHENGA AND SOFT NET DUPATTA AND IT IS HEAVILY ENHANCED BY STONE EMBELLISHMENT.HIGHLIGHT OF THIS DRESS IS CUT WORK DONE ON KALI AND BEAUTIFUL BELT IS ATTACHED ON WAIST.	2695/-
5302	THIS SET FEATURES A GRACEFUL SEA BLUE ANARKALI IN BEAUTIFUL NET BASE EMBROIDERED WITH CODING ,THREAD ,JARI, BADLA AND SPARKLE SEQUINS AND STONE WORK. IT IS PAIRED WITH BANGALORI(LEHENGA AND PANT).PANT IS ENHANCED BY BEAUTIFUL EMBROIDERY WITH SOFT ROUND NET DUPATTA WHICH IS HEAVILY ENHANCED BY STONE WORK. HIGHLIGHT OF THIS DRESS IS FRILL LACE ATTACHED ON SLEEVES.	3175/-
5303	FEATURING THIS AMAZING GREY ANARKALI IN TAFETTA BASE DONE WITH CHAIN STITCH EMBROIDERY IN THREAD ,BADLA, SEQUINS AND STONE EMBELLISHMENT. IT IS PAIRED WITH BANGALORI SILK LEHENGA AND TAFETTA PANT. BEAUTIFUL EMBROIDERED BORDER IS ATTACHED ON PANT AND SOFT NET DUPATTA IS HEAVILY ENHANCED WITH STONE WORK.	3525/-
5304	FEATURING THIS PRETTY PEACH GOWN IN ROUND NET WITH LIGHT GREEN SATIN INNER. EMBROIDERY WORK IS COMPLETED WITH CODING ,THREAD, BADLA AND SPARKLE SEQUINS AND STONE EMBELLISHMENT. IT IS PAIRED WITH SOFT NET DUPATTA WHICH IS HEAVILY ENHANCED WITH STONE EMBELLISHMENT AND SANTOON BOTTOM.	2595/-
5305	FEATURING THIS GORGEOUS DUSTY MAUVE IN ROUND NET BASE EMBROIDERED WITH CODING THREAD, JARI, BADLA, SPARKLE SEQUINS AND STONE EMBELLISHMENT. IT IS PAIRED WITH SOFT NET DUPATTA WHICH IS HEAVILY ENHANCED WITH STONE EMBELLISHMENT AND SANTOON BOTTOM.	2995/-
5306	GLAMOROUS PISTA GREEN PARTY WEAR ANARKALI SUIT IN ROUND NET EMBROIDERED WITH CODING, THREAD, JARI, BADLA, SPARKLE SEQUINS AND STONE EMBELLISHMENTS. IT IS PAIRED WITH BANGLORI (LEHENGA AND PANT) PANT IS ENHANCED BY BEAUTIFUL EMBROIDERED BORDER AND SOFT ROUND NET DUPATTA WHICH IS HEAVILY ENHANCED WITH STONE EMBELLISHMENT.	3625/-
5307	FEATURING THIS STUNNING DARK BEIGE ANARKALI SUIT IN ROUND NET EMBROIDERD WITH CODING, THREAD, JARI AND SEQUINS. IT IS PAIRED WITH BANGLORI LEHENGA AND PANTS. EMBROIDERED BORDER IS ATTACHED ON PANTS. IT ALSO COMES ALONG WITH SOFT ROUND NET DUPATTA WHICH IS HEAVILY ENHANCED WITH STONE WORK.	3625/-
5308	RAVISHING GREY PARTY WEAR SHARARA STYLE SUIT WHICH WILL GIVE YOU A DIVA LOOK FEATURES AN EMBROIDERED ROUND NET KAMEEZ WITH EMBROIDERED SATIN SHARARA AND DUSTY PINK BANGLORI LEHENGA. AND THIS BEAUTIFUL DRESS COMES WITH SOFT ROUND NET DUPATTA WHICH IS HEAVILY ENHANCED WITH STONE WORK. EMBROIDERY IS COMPLETED WITH CODING, THREAD, JARI, BADLA SPARKLE SEQUINS AND STONE EMBELLISHMENTS.	2935/-
AVERAGE PRICE PER PCS = 3146/-		25170/-
GST CHARGES EXTRA		