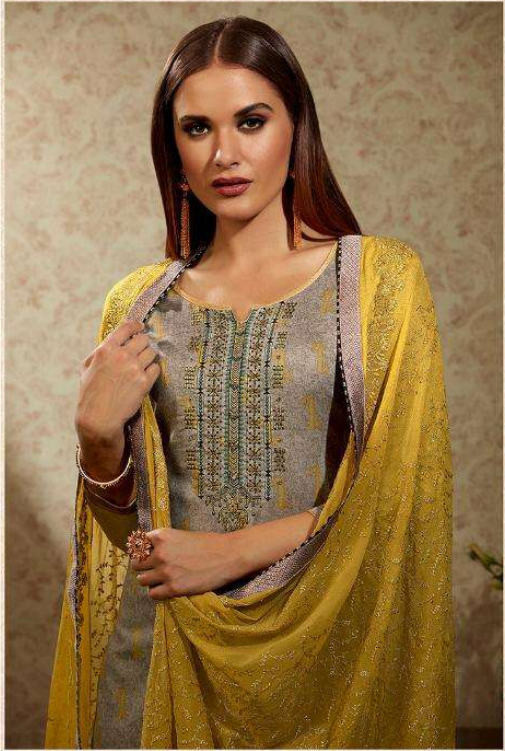
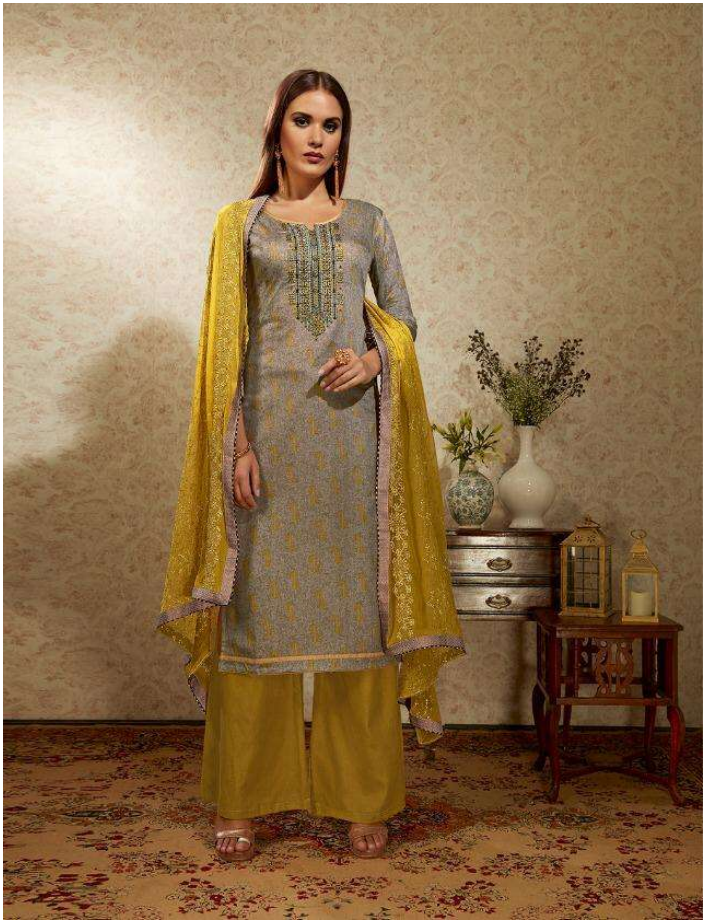



RAMAIYA
ROYAL WORLD OF CLOTHING

Afaaz



10051



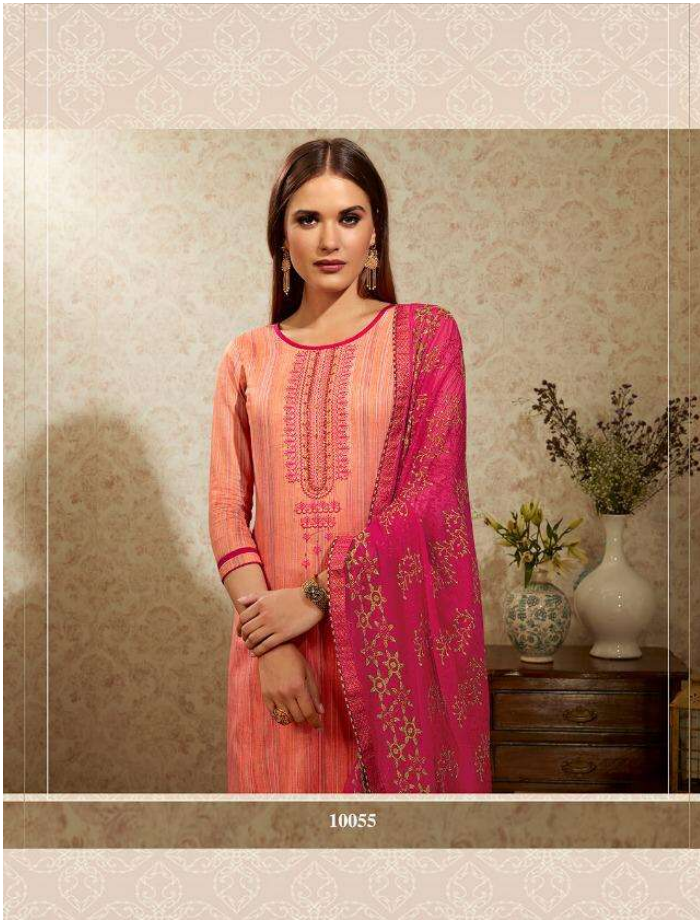
10052



10053







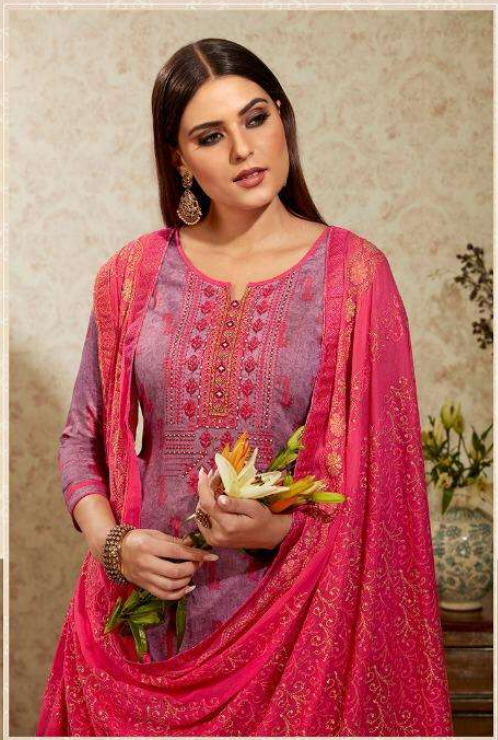


10056



10057





10058





We're excited to announce



Has **Launched New** Catalog

Alfaaz

BOOK NOW

Fabrics Details

TOP :- Cotton Satin Embroidery work
with Khatli work Neck

BOTTOM :- Cotton

DUPATTA :- Nazneen Badal with Work

No.of Design :- 08

Dispatching :- 5 to 6 Days Later

Booking Started From Now.....

Book Your Order ASAP.....



CATALOG NAME



Alfaaz

PIECES : 8

	FABRICS DETAILS (Material Only)
TOP	COTTON SATIN EMBROIDERY WORK WITH KHATLI WORK NECK
BOTTOM	COTTON
DUPATTA	NAZNIN BADLA JARI WORK



10051



10052



10055



10056



10053



10054



10057



10058