

A woman with dark hair and large earrings is leaning on a wooden railing. She is wearing a long, flowing dress with a pattern of vertical stripes and floral motifs in shades of green, black, and pink. The background shows a thatched roof made of wooden beams and dried palm leaves, suggesting a traditional Indian setting. The lighting is soft and natural, highlighting the textures of the fabric and the wood.

*Heer*

BY KIMORA

CONTEMPORARY INDIAN WEAR

KINARI



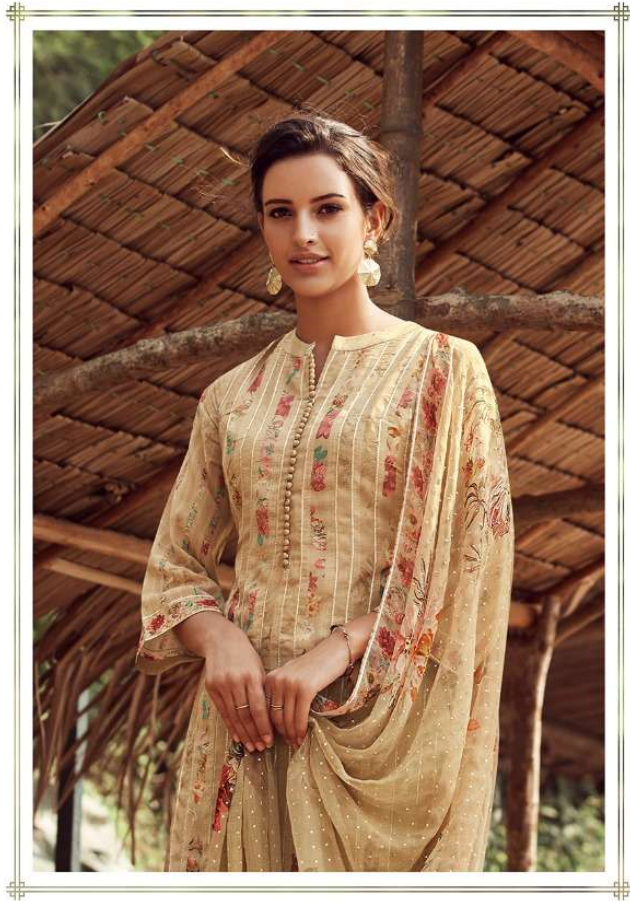


#9941









#9943



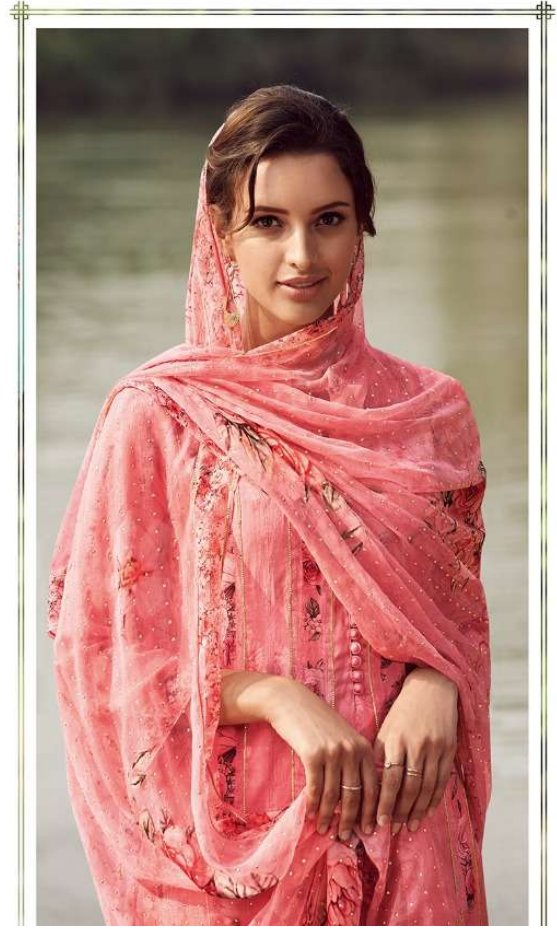




HEER



#9945

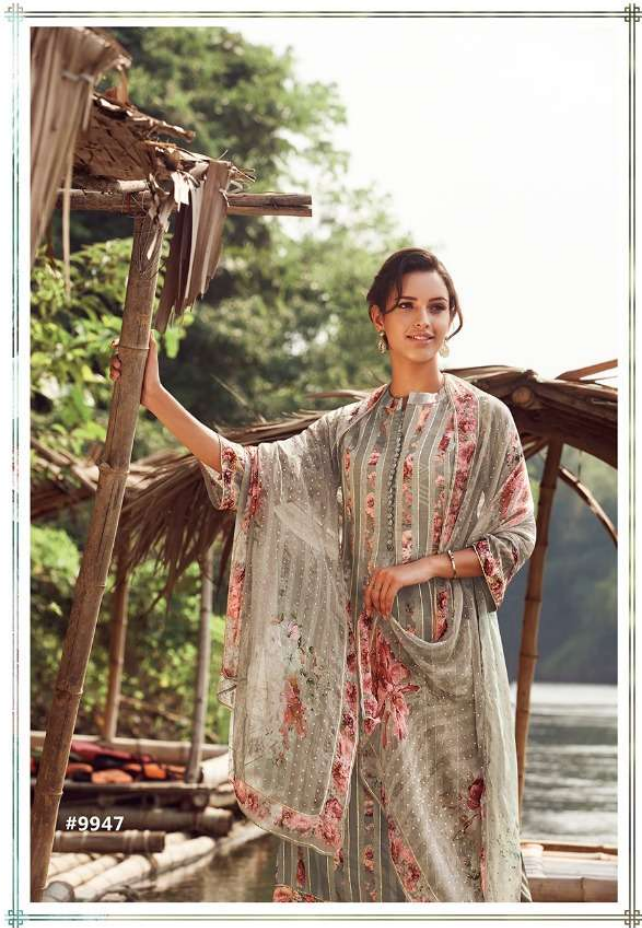




HEER

#9946









#9948



#9941



#9942



#9945



#9946



#9943



#9944



#9947



#9948





# KINARI

VOLUME 65

### TOP

Pure muslin silk with digital floral print enhanced with gota pati

### BOTTOM

Pure fine cotton with satin

### DUPPATA

Pure bamber chiffon along with digital floral print highlighted with mukaish and four sided gota pati border.

DESIGN NO :- 9941-9948

*Heer*

**KIMORA**

[www.kimora.in](http://www.kimora.in)