



RAMAIYA

ROYAL WORLD OF CLOTHING

SHALIMAR





**RAMAIYA**  
ROYAL WORLD OF CLOTHING



*Classic styles with luxurious soft fabrics are highlighted by refined and feminine details.*

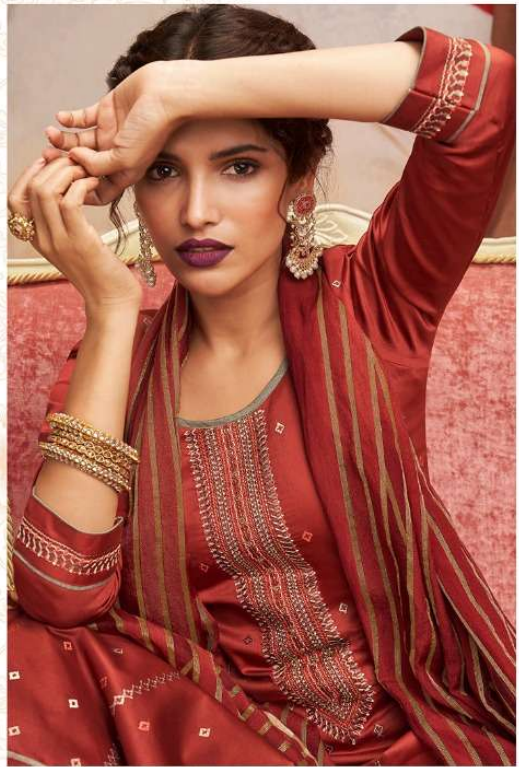
**10161**







*Different styles come together in a tribute to fashion's biggest moment this season.*



10163





*Exotic hues & natural fabrics make for soft classic look to your beauty.*

10165









*Pillars & prints to blend into a easy draped silhouette in soft seasonal fabrics.*  
**10168**





10161



10162



10165



10166



10163



10164



10167



10168



CATALOG NAME : **Shalimar**

PIECES : **8**

	<b>FABRICS DETAILS (Material Only)</b>
TOP	JAM SILK WITH EMBROIDERY WORK AND KHATLI WORK
BOTTOM	HEAVY RAYON WITH EMBROIDERY BORDER WORK
DUPATTA	COTTON SATIN JARI PATTI FANCY DUPATTA



We are excited to announce

**RAMAIYA**

ROYAL WORLD OF CLOTHING

Has Launched New Catalogue

**SHALIMAR**

VOL-01

**BOOK NOW**



**TOP :-** Jam Silk with Embroidery Work & Khatli Work

**BOTTOM :-** Heavy Rayon with Embroidery Border Work

**DUPATTA :-** Cotton Satin Jari Patta Fancy Dupatta

**No. of Designs :-** 08

**Dispatch within 5 to 6 days...**

**Booking Started From Now...**

**Book Your Oder ASAP...**

