



FLORIN

The collection was a perfect blend of vibrant colors & contemporary style



Shaa



1941



The flowers of white shaa and their intricate embroidery give a really eye-catching and beautiful look to the dress.





*When was that breeze into the hair, a whisper of the softest breeze and gentle rain
 Breathe and sigh the cotton that adds to a range of beautiful, soft and warm colors and designs*

1942



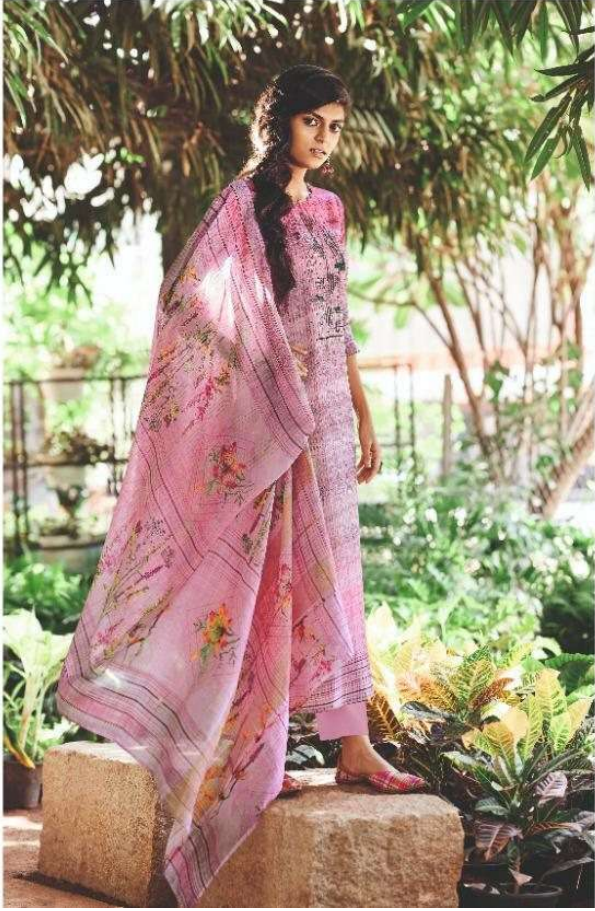
Shea

everything you need to refresh your fashion wardrobe from delicate drapes to the subtle steps of the season



1913

Shaa



The flower of India, the
rose, has been the contemporary
flower in the garden
with a more delicate fragrance.

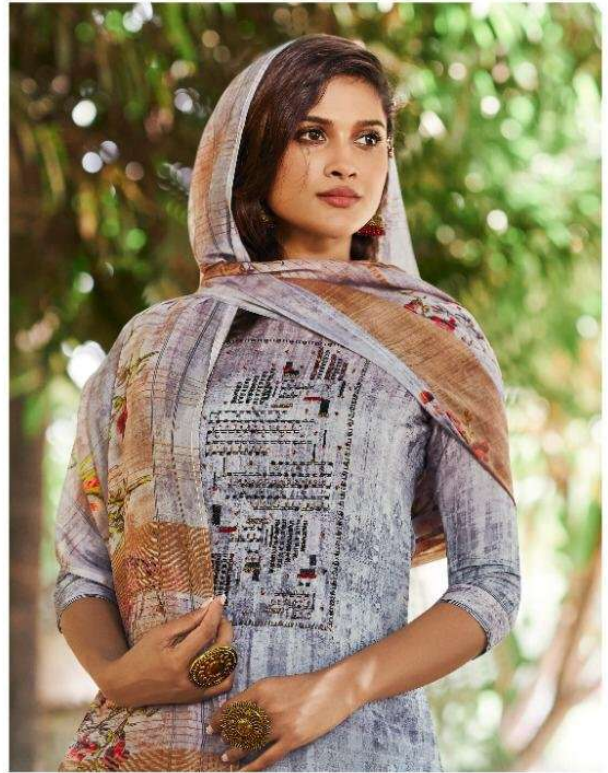
1944





make your beautiful photos, while you are in our best quality fabrics, that make the difference.

1945







Shea



in a balanced blue, red and green
all over the west coast of

1947







Shaa

*Simple, elegant, timeless, a blend of
elegance & tradition with minimal fabric*

1919



Shaa



*When ever the breeze in the hair, in your radiating the fragrance is beauty and good grace
floral and style the collection that will have a range of beautiful crafted suits in various colors and designs*

1950

Shat

1941



1942



1943



1946



1947



1948



1944



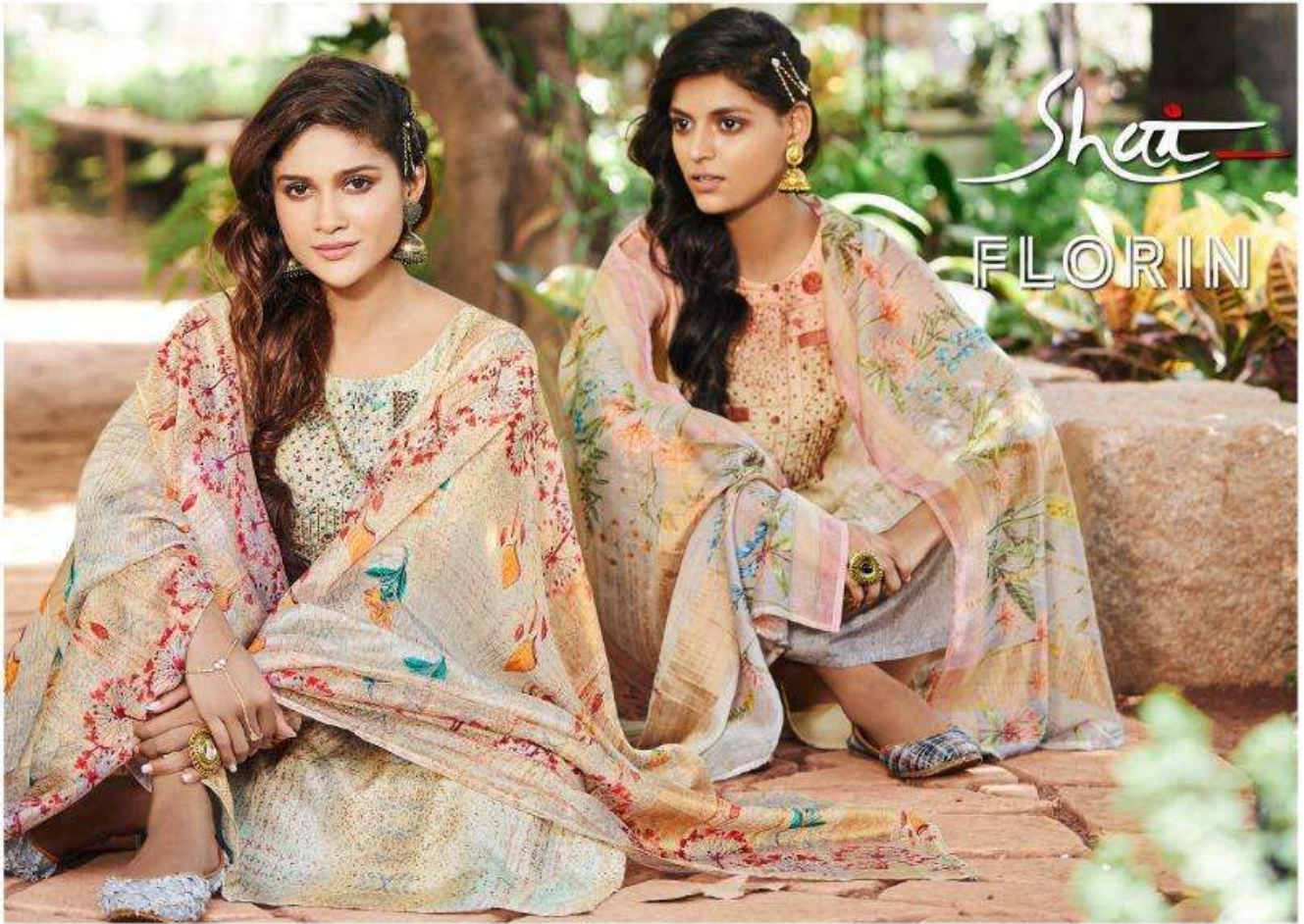
1945



1949



1950



DESIGN NO.	CATALOG NAME	DESCRIPTION	PRICE
1941	FLORIN	TOP - PURE BEMBERG SILK DIGITAL PRINT WITH HAND WORK BOTTOM - PURE COTTON SATIN (SOLID COLOR) DUPATTA - PURE MUSLIN LINING DIGITAL PRINT WITH WORK	1575/-
1942	FLORIN	TOP - PURE BEMBERG SILK DIGITAL PRINT WITH HAND WORK BOTTOM - PURE COTTON SATIN (SOLID COLOR) DUPATTA - PURE MUSLIN LINING DIGITAL PRINT WITH WORK	1575/-
1943	FLORIN	TOP - PURE BEMBERG SILK DIGITAL PRINT WITH HAND WORK BOTTOM - PURE COTTON SATIN (SOLID COLOR) DUPATTA - PURE MUSLIN LINING DIGITAL PRINT WITH WORK	1575/-
1944	FLORIN	TOP - PURE BEMBERG SILK DIGITAL PRINT WITH HAND WORK BOTTOM - PURE COTTON SATIN (SOLID COLOR) DUPATTA - PURE MUSLIN LINING DIGITAL PRINT WITH WORK	1575/-
1945	FLORIN	TOP - PURE BEMBERG SILK DIGITAL PRINT WITH HAND WORK BOTTOM - PURE COTTON SATIN (SOLID COLOR) DUPATTA - PURE MUSLIN LINING DIGITAL PRINT WITH WORK	1575/-
1946	FLORIN	TOP - PURE BEMBERG SILK DIGITAL PRINT WITH HAND WORK BOTTOM - PURE COTTON SATIN (SOLID COLOR) DUPATTA - PURE MUSLIN LINING DIGITAL PRINT WITH WORK	1575/-
1947	FLORIN	TOP - PURE BEMBERG SILK DIGITAL PRINT WITH HAND WORK BOTTOM - PURE COTTON SATIN (SOLID COLOR) DUPATTA - PURE MUSLIN LINING DIGITAL PRINT WITH WORK	1575/-
1948	FLORIN	TOP - PURE BEMBERG SILK DIGITAL PRINT WITH HAND WORK BOTTOM - PURE COTTON SATIN (SOLID COLOR) DUPATTA - PURE MUSLIN LINING DIGITAL PRINT WITH WORK	1575/-
1949	FLORIN	TOP - PURE BEMBERG SILK DIGITAL PRINT WITH HAND WORK BOTTOM - PURE COTTON SATIN (SOLID COLOR) DUPATTA - PURE MUSLIN LINING DIGITAL PRINT WITH WORK	1575/-
1950	FLORIN	TOP - PURE BEMBERG SILK DIGITAL PRINT WITH HAND WORK BOTTOM - PURE COTTON SATIN (SOLID COLOR) DUPATTA - PURE MUSLIN LINING DIGITAL PRINT WITH WORK	1575/-

TOTAL PIECES : 10

TOTAL AMOUNT : 15,750/- + GST