

A woman with dark hair pulled back is sitting on a wooden bench. She is wearing a black long-sleeved dress with intricate floral and paisley embroidery in red, gold, and green. She is also wearing large, ornate gold earrings, a matching bracelet, and several rings. The background shows a white lattice door and a pink wall with greenery.

Avon
TRENDZ PVT. LTD.

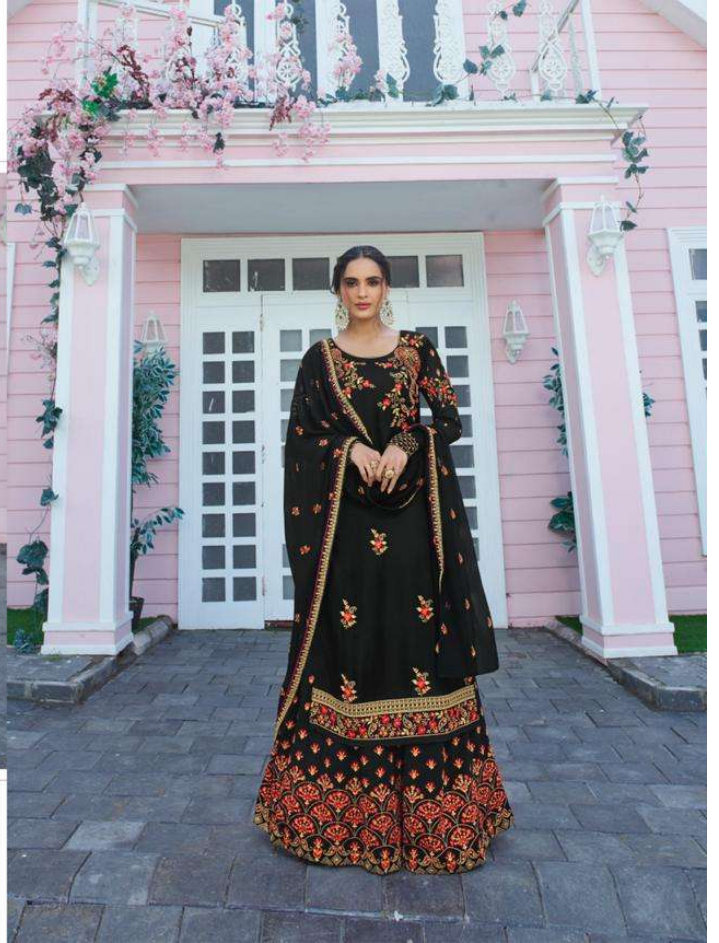
Colour Carnival

VOL-10
PLAZZO





5011-A





Avon
TRENZ PVT. LTD.

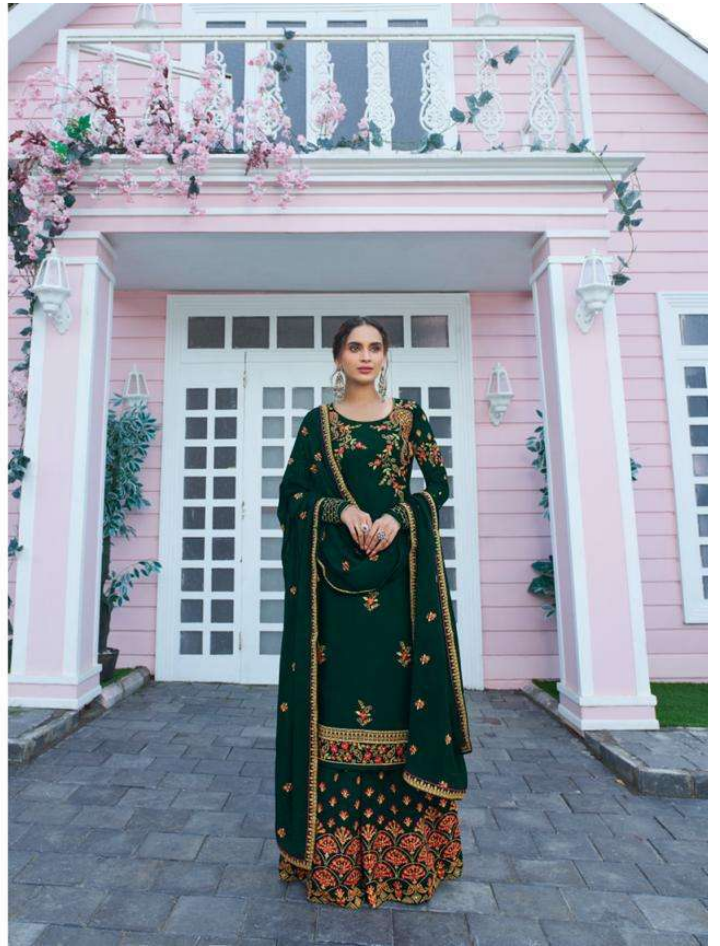
5011-B



Avon
TRENDS PVT. LTD.



5011-C





Avon
TRENDZ PVT. LTD.

6011-D





5011-A



5011-B



5011-C



5011-D