

KASMEERA[®]
Afreen







1018

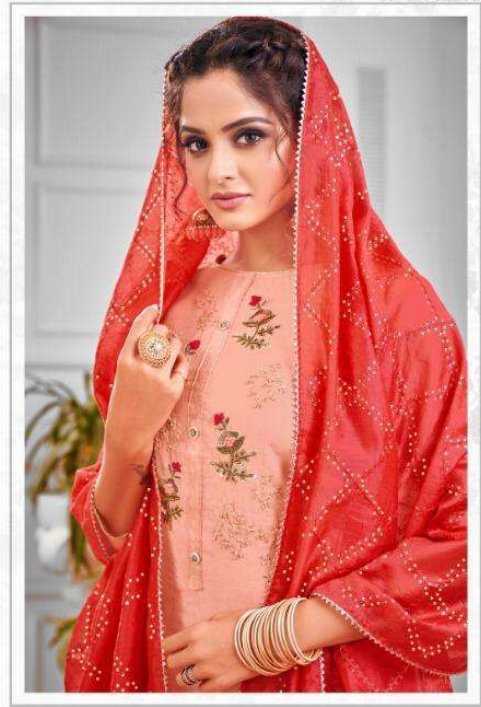




KASMEERA



1021

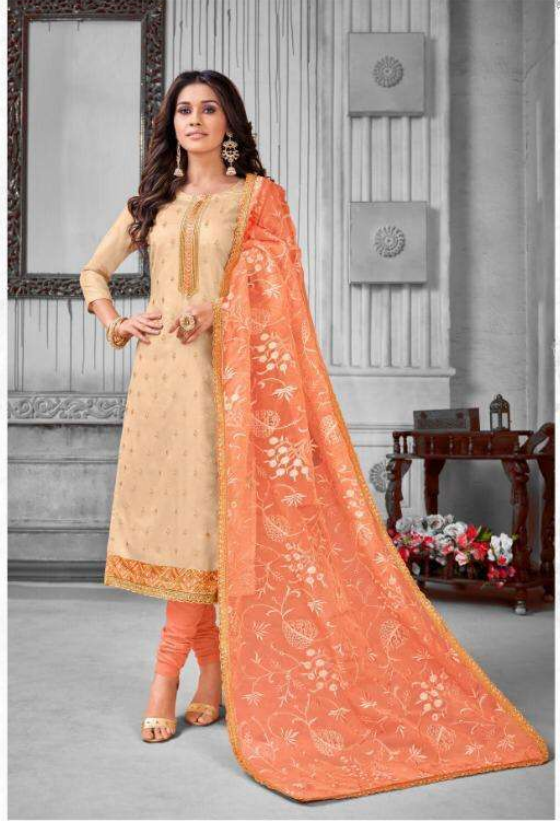


KASMEERA

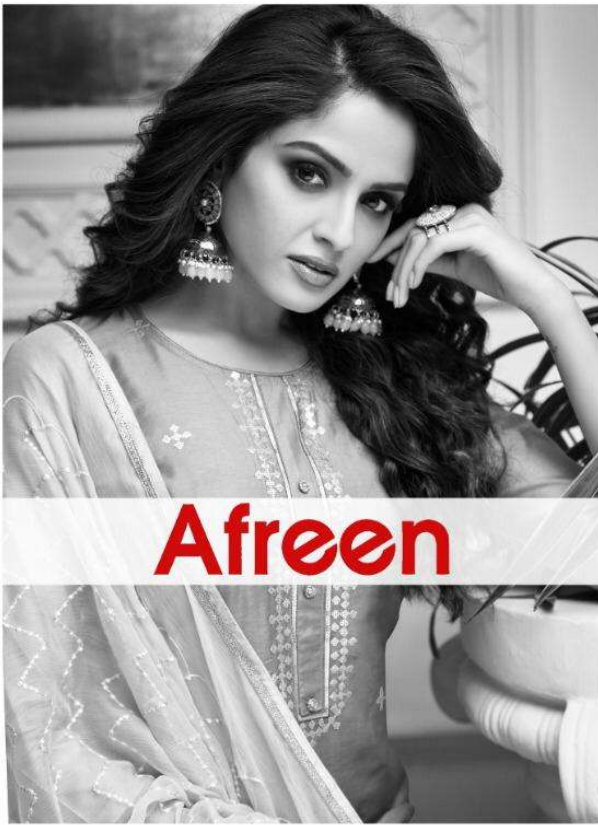
1022



1023



1024



Afreen



1017



1018



1019



1020



1021



1022



1023



1024

Afreen

FABRIC DETAIL

D No.	TOP	BOTTOM	DUPATTA
1017	Long slub sequence ton to ton work (2.40mtr)	Dull Santoon(2.50mtr)	Dyble chanderi heavy embroidery (2.25mtr)
1018	Tasar silk sequence neck work (2.40mtr)	Dull Santoon(2.50mtr)	Dyble chanderi heavy embroidery (2.25mtr)
1019	Modal Silk sequence work(2.40mtr)	Pure cotton (2.50mtr)	Nazlin work (2.25mtr)
1020	model silk ton to ton and sequence work (2.40mtr)	Pure cotton (2.50mtr)	Dyble Chanderi lining (2.25mtr)
1021	Model silk khatli work (2.40mtr)	Pure cotton (2.50mtr)	Net heavy embroidery (2.25mtr)
1022	Modal Silk khatli work (2.40mtr)	Pure cotton (2.50mtr)	Dyble chanderi ton to ton and sequence embroidery (2.25mtr)
1023	Modal Silk khatli work (2.40mtr)	Pure cotton (2.50mtr)	Banarasi jequard dupatta (2.25mtr)
1024	Modal Silk embroidery (2.40mtr)	Pure cotton (2.50mtr)	Orgenza heavy embroidery (2.25mtr)