



Style
ARCHIVE
Ultimate desire of traditional branded



2008






2001

2002



2007

2008



2003

2004



2009

2010



2005

2006



2011

2012



BEAUTY
SPARKLING
Floral design make it perfect

2001






MAGICAL
Mood changer by color of hot maglio

2002




IMAGINE
Mod changer by color of hot magic

2003



Style
ARCHIVE
Ultimate desire of traditional branded

2004
❦

MAGICAL
Mood changer by color of hot magic





BEAUTY
SPARKLING
Floral design make it perfect

2007






Style
ARCHIVE
Ultimate desire of traditional branded



2008
—
—





MAGICAL
Mood changer by color of hot magic



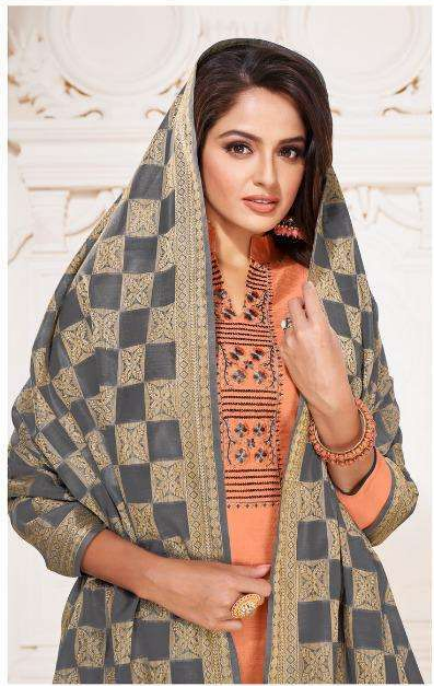
2009
Aesthetics



2010

BEAUTY
SPARKLING
Floral design make it perfect





BEAUTY
SPARKLING
Floral design make it perfect

2011





MAGICAL

Mood changer by color of hot magic



2012

VACCINE

Vol-2



- D.NO: 2001 - TOP-Modal silk with Embroidery (2:40)
BOTTOM- Cotton (2)
DUPATTA- Banarasi jeq (2:40)
- D.NO: 2002 - TOP-Modal silk with Embroidery (2:40)
BOTTOM- Cotton (2)
DUPATTA- Banarasi jeq (2:40)
- D.NO: 2003 - TOP-Modal silk with Embroidery (2:40)
BOTTOM- Cotton (2)
DUPATTA- Banarasi jeq (2:40)
- D.NO: 2004 - TOP-Modal silk with Embroidery (2:40)
BOTTOM- Cotton (2)
DUPATTA- Banarasi jeq (2:40)
- D.NO: 2005 - TOP-Modal silk with Embroidery (2:40)
BOTTOM- Cotton (2)
DUPATTA- Banarasi jeq (2:40)
- D.NO: 2006 - TOP-Modal silk with Embroidery (2:40)
BOTTOM- Cotton (2)
DUPATTA- Banarasi jeq (2:40)
- D.NO: 2007 - TOP-Modal silk with Embroidery (2:40)
BOTTOM- Cotton (2)
DUPATTA- Banarasi jeq (2:40)
- D.NO: 2008 - TOP-Modal silk with Embroidery (2:40)
BOTTOM- Cotton (2)
DUPATTA- Banarasi jeq (2:40)
- D.NO: 2009 - TOP-Modal silk with Embroidery (2:40)
BOTTOM- Cotton (2)
DUPATTA- Banarasi jeq (2:40)
- D.NO: 2010 - TOP-Modal silk with Embroidery (2:40)
BOTTOM- Cotton (2)
DUPATTA- Banarasi jeq (2:40)
- D.NO: 2011 - TOP-Modal silk with Embroidery (2:40)
BOTTOM- Cotton (2)
DUPATTA- Banarasi jeq (2:40)
- D.NO: 2012 - TOP-Modal silk with Embroidery (2:40)
BOTTOM- Cotton (2)
DUPATTA- Banarasi jeq (2:40)

Cut... TOP(2.40)

DUPATTA(2.40)

BOTTOM(2.0)