

A close-up portrait of a woman with dark hair, wearing a yellow and red patterned sari. She is looking slightly to the left with a thoughtful expression, her hand near her mouth. She is wearing a gold nose ring and a matching ring on her finger. The background is a soft-focus outdoor scene with a building.

RICCO®

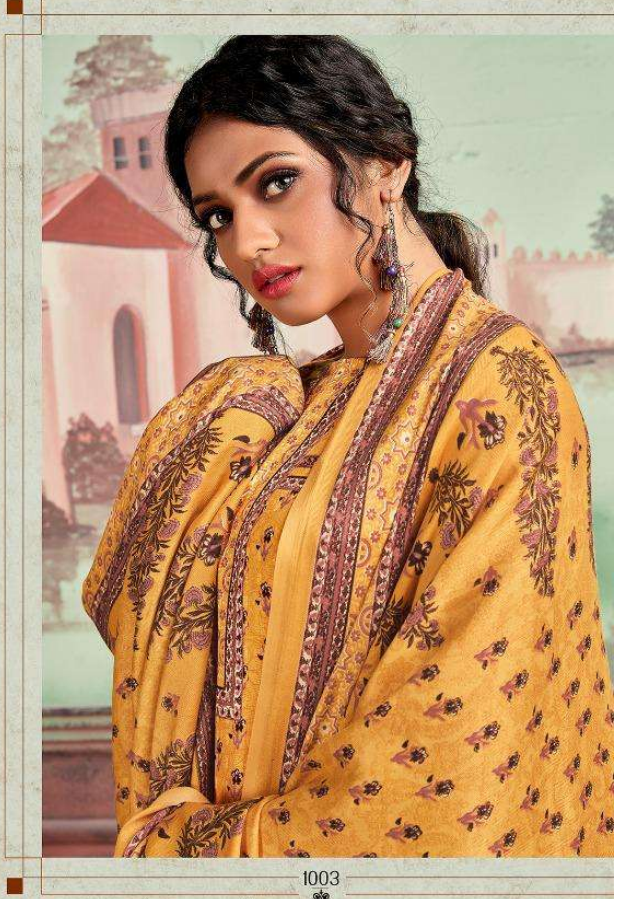
MARQUINA VOL-01



FOLLOW THE TREND  
BY THE STYLIS ICON

1001  
✿





1003  
✿

GO WITH *the* FLOW  
BE THE STYLE ICON





LOOK *look* ARTISTIC  
— BE INSPIRATIONAL —

1006  
✿



FOLLOW *the* TRENDS



1007  
✿







1008  
❁



1001  
❁

1002  
❁

1003  
❁

1004  
❁



1005  
❁

1006  
❁

1007  
❁

1008  
❁