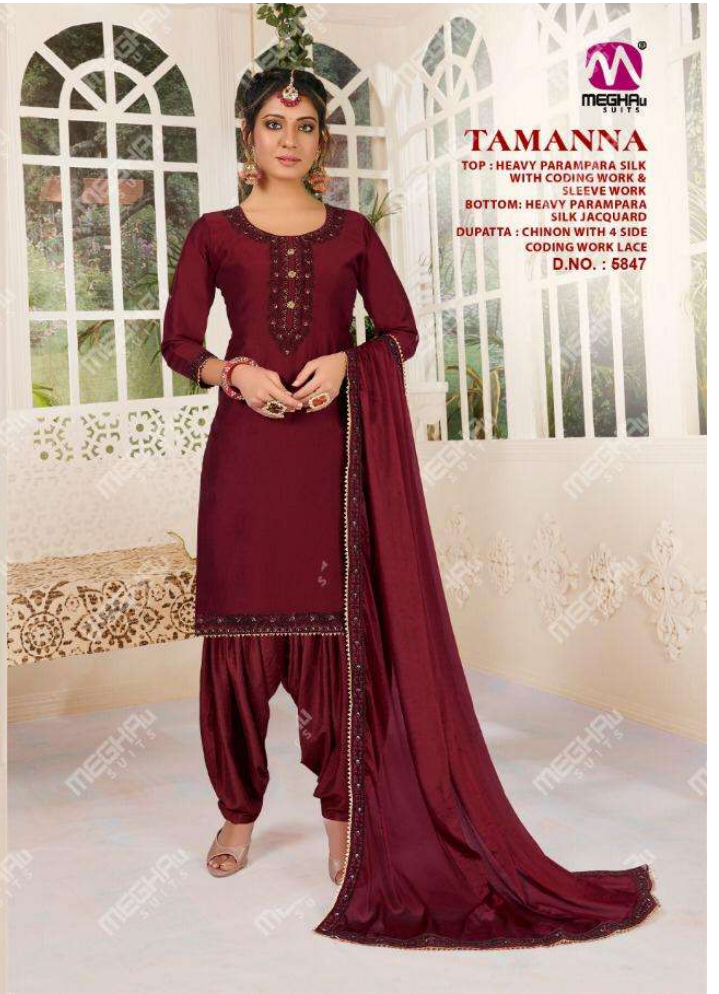




TAMANNA

TOP : HEAVY PARAMPARA SILK
WITH CODING WORK &
SLEEVE WORK
BOTTOM: HEAVY PARAMPARA
SILK JACQUARD
DUPATTA : CHINON WITH 4 SIDE
CODING WORK LACE
D.NO. : 6852



TAMANNA

TOP : HEAVY PARAMPARA SILK
WITH CODING WORK &
SLEEVE WORK
BOTTOM: HEAVY PARAMPARA
SILK JACQUARD
DUPATTA : CHINON WITH 4 SIDE
CODING WORK LACE
D.NO. : 5847



TAMANNA

TOP : HEAVY PARAMPARA SILK
WITH CODING WORK &
SLEEVE WORK
BOTTOM: HEAVY PARAMPARA
SILK JACQUARD
DUPATTA : CHINON WITH 4 SIDE
CODING WORK LACE
D.NO. : 5848



TAMANNA

TOP : HEAVY PARAMPARA SILK
WITH CODING WORK &
SLEEVE WORK
BOTTOM: HEAVY PARAMPARA
SILK JACQUARD
DUPATTA : CHINON WITH 4 SIDE
CODING WORK LACE
D.NO. : 5849



TAMANNA
TOP : HEAVY PARAMPARA SILK
WITH CODING WORK &
SLEEVE WORK
BOTTOM: HEAVY PARAMPARA
SILK JACQUARD
DUPATTA : CHINON WITH 4 SIDE
CODING WORK LACE
D.NO. : 5850



TAMANNA

TOP : HEAVY PARAMPARA SILK
WITH CODING WORK &
SLEEVE WORK
BOTTOM: HEAVY PARAMPARA
SILK JACQUARD
DUPATTA : CHINON WITH 4 SIDE
CODING WORK LACE
D.NO. : 6851



TAMANNA

TOP : HEAVY PARAMPARA SILK
WITH CODING WORK &
SLEEVE WORK
BOTTOM: HEAVY PARAMPARA
SILK JACQUARD
DUPATTA : CHINON WITH 4 SIDE
CODING WORK LACE
D.NO. : 6852



D.NO.5847



D.NO.5848



D.NO.5849



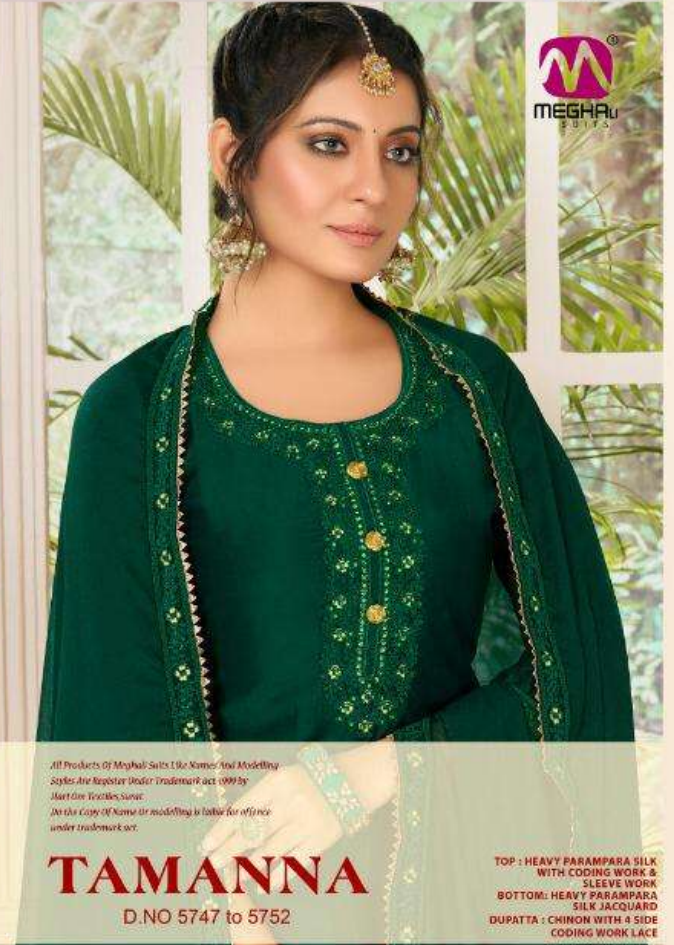
D.NO.5850



D.NO.5851



D.NO.5852



All Products Of Megha Suts Like Name And Modelling Styles Are Register Under Trademark act 1999 by Just One Textiles Surt.
In the Copy Of Name Or Modelling Is Take for offence under trademark act.

TAMANNA

D.NO 5747 to 5752

TOP : HEAVY PARAMPARA SILK WITH CODING WORK & SLEEVE WORK
BOTTOM: HEAVY PARAMPARA SILK JACQUARD
DUPATTA : CHINON WITH A SIDE CODING WORK LACE