

A woman with dark hair is shown from the waist up, wearing a black dress with intricate floral and paisley patterns in green, red, and white. She is also wearing a matching shawl with a green and red geometric pattern. She has a small tear on her cheek and is wearing large, ornate earrings, a ring, and a watch. The background is a warm, textured wall with a framed picture.

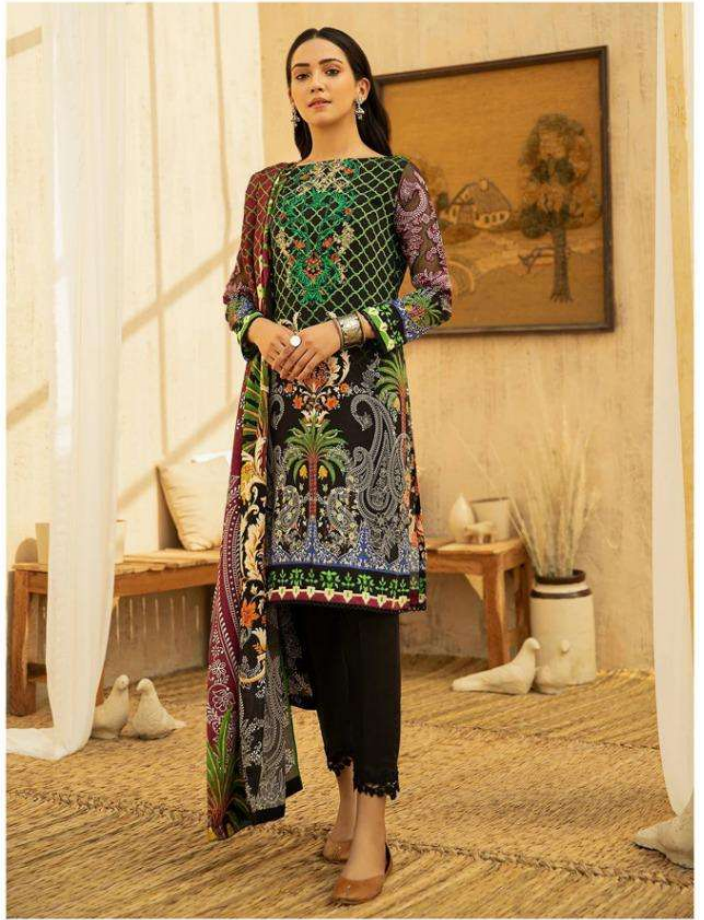
CYRA[™]
FASHION

SEHRISH
LIMITED EDITION



SEHRISH
LIMITED EDITION

CF - 101



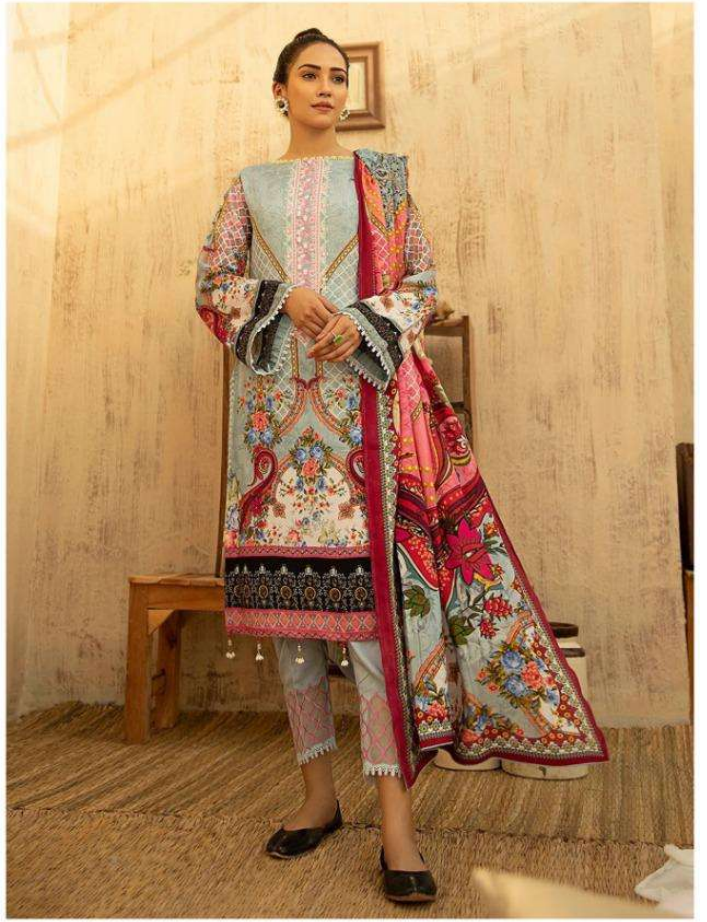
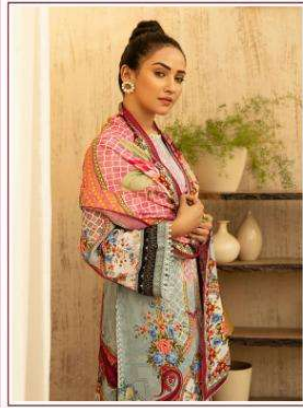


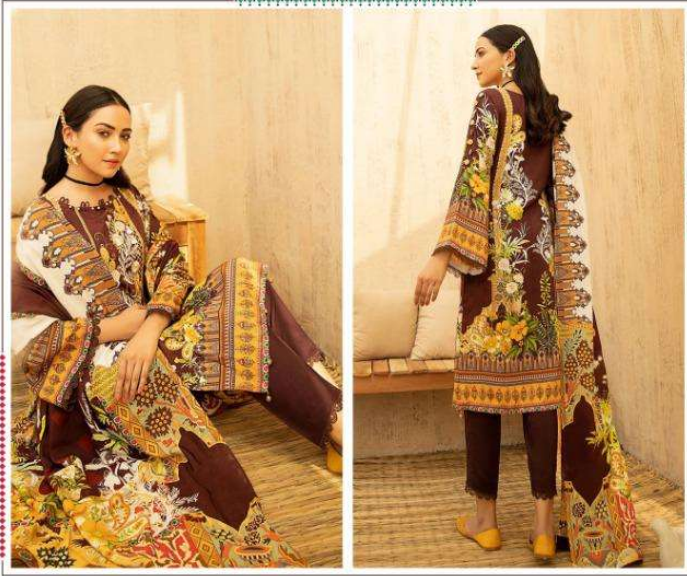
 **CYRA**
FASHION

SEHRISH
LIMITED EDITION



CF - 102



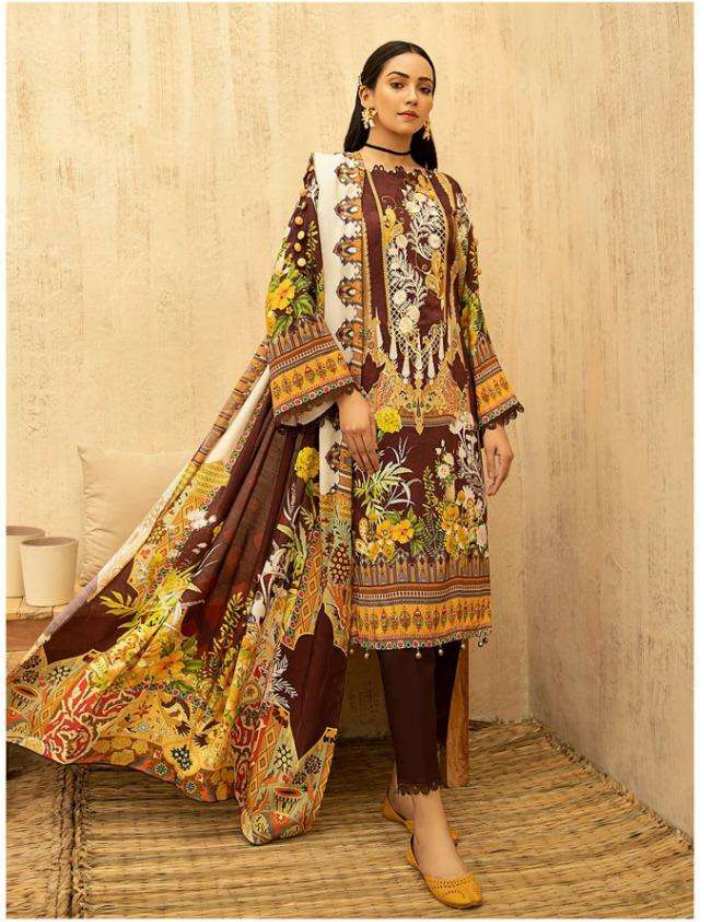


THIS SEASON IS GIVING TO BE BRIGHT & COLORFUL




CF - 103

SEHRISH
LIMITED EDITION





CF - 101



CF - 102



CF - 103

 **CYRA**
FASHION

SEHRISH
LIMITED EDITION



CYRA
FASHION

SEHRISH
LIMITED EDITION

D.NO.	TOP	BOTTAM	DUPATTA
CF-101	COTTON DIGITAL PRINT WITH PATCH WORK	LAWN COTTON WITH PATCH WORK	SIFFON DIGITAL PRINT
CF-102	COTTON DIGITAL PRINT WITH PATCH WORK	LAWN COTTON WITH PATCH WORK	SIFFON DIGITAL PRINT
CF-103	COTTON DIGITAL PRINT WITH PATCH WORK	LAWN COTTON WITH PATCH WORK	SIFFON DIGITAL PRINT

THANK'S FOR YOUR SUPPORT
RATE :- 749 + G.S.T. (extra)