

KASMEERA®  
**Afreen**  
Vol-3





2106



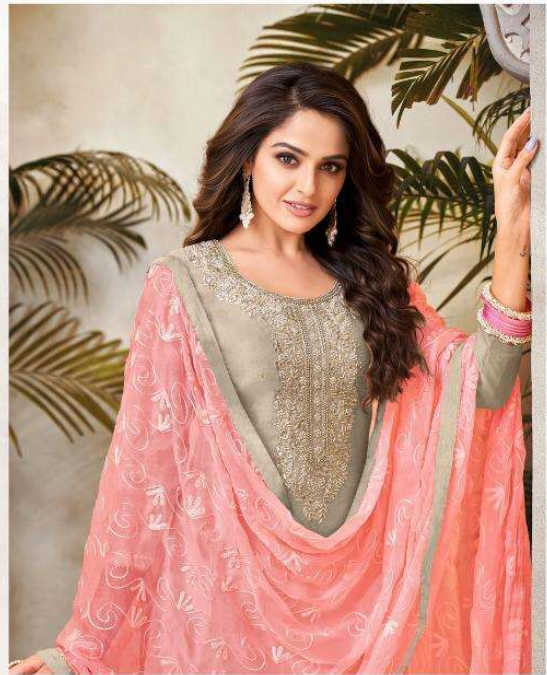


2108



2109





2110



2111

**KASMEERA**<sup>®</sup>  
a quality product

**Afreen**  
Vol-3



2106



2107



2108



2109



2110



2111



# Afreen

Vol-3

## FABRIC DETAIL

D No.	TOP	BOTTOM	DUPATTA
2106	Maslin silk with yok Design (2.50mtr)	Dull Santoon(2.50mtr)	Orgenza Silk Heavy Embroidery Work (2.25mtr)
2107	Jam buti Yok Design And Daman Lace (2.50mtr)	Pure cotton (2.50mtr)	Gadhwal silk Heavy embroidery Work (2.25mtr)
2108	Modal Silk Sequence Work (2.50mtr)	Pure cotton (2.50mtr)	Nazlin work (2.25mtr)
2109	Chinon Silk Coding Work (2.25mtr)	Dull Santoon(2.50mtr)	Chinon Silk Digital Print (2.30mtr)
2110	Model Silk Embroidery With khatli Work (2.50mtr)	Dull Santoon(2.50mtr)	Nazline Chain Work (2.25mtr)
2111	Modal Silk ton to ton With Sequence Work (2.50mtr)	Dull Santoon(2.50mtr)	Godhwal Silk Sequence work (2.25mtr)