



NIRVANA
FASHION

Design. 5103



Design. 5101

Design. 5102

Design. 5103

Design. 5104



Design. 5105

Design. 5106

Design. 5107

Design. 5108



NIRVANA
LONDON



Design. 5102



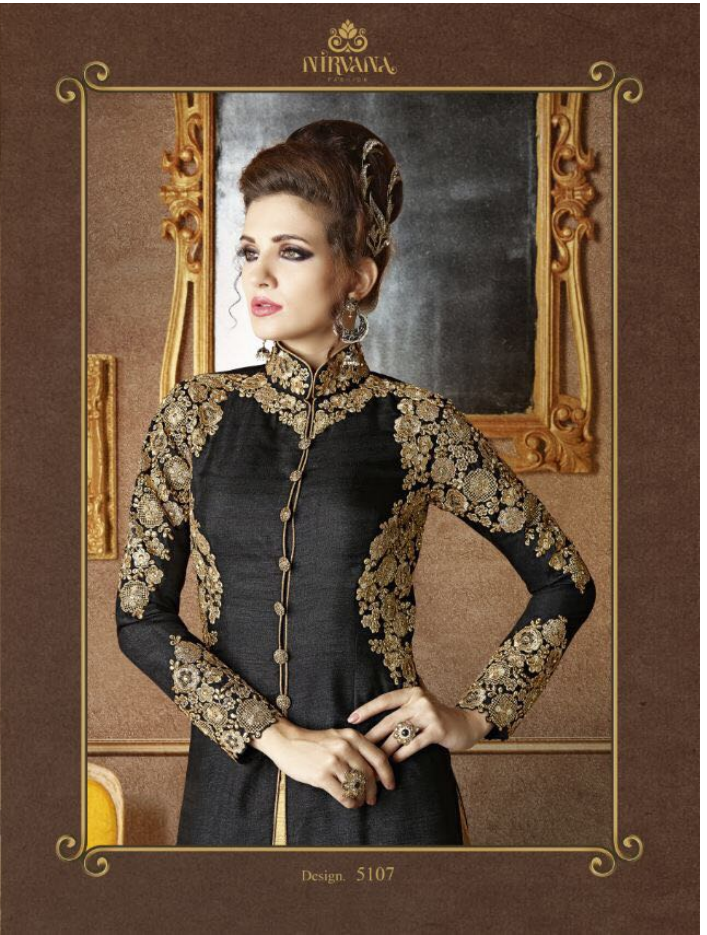








Design. 5106







CATLOUGE PRICE LIST

<u>DES.NO.</u>	<u>DESCRIPTION</u>	<u>PRICE</u>
5101	FEATURING A WINE EMBROIDERED JACKET IN SLUB GEORGETTE FABRIC WITH JARI,MULTI, SEQUENCE WORK IN FRONT PANEL & SLEEVES IT COMES ALONG WITH FUSCHIA PINK COLOR MULBERRY SILK LEHANGA WITH GOTTA FABRIC AS ITS BORDER & FUSCHIA PINK DUPATTA IN ROUND SOFT NET EMBELLISHED WITH STONE.	2695
5102	FEATURING A OFF WHITE ANARKALI IN ROUND NET WITH MULTI,JARI, SEQUENCE FLORAL EMBROIDERY EMBELLISHED WITH STONE, NICELY SCATTERED ALL OVER. IT COMES ALONG WITH MATCHING OFF-WHITE SHANTOON AS BOTTOM AND DUPATTA IN SOFT ROUND NET WITH STONE CHITTA WORK ON IT.	3275
5103	THIS SET FEATURES A RED ANARKALI IN ROUND NET GOLD SEQUENCE & JARI EMBROIDERED ON IT & RED BANARSI SILK AS IT YOKE & SLEEVES WICH IS NICELY PLAYED WITH JARI & SEQUENCE WORK IT HAS A SLIT IN THE CENTER FRONT, IT IS PAIRED WITH RED BANARSI SILK LEHANGA & PANTS ARE EMBROIDERED WITH JARI & SEQUENCE ON IT. IT ALSO COMES ALONG WITH RED SOFT NET DUPATTA WITH THE STONE PLACED ALL OVER IT.	3495
5104	FEATURING A GREY ANARKALI IN ROUND NET WITH CODING & SEQUENCE FLORAL EMBROIDERY WITH SHANTOON AS ITS BOTTOM & CONSISTS OF ROUND SOFT NET DUPATTA WITH STONE WORK ON IT.	3185
5105	THIS SET FEATURES A BLUE ANARKALI IN MULBERRY SILK WITH MULTI COLOR FLORAL EMBROIDERY ON KALI & SLEEVES WITH VERY ATTRACTIVE CODING & JARI NECKLINE. IT ALSO COMES ALONG WITH SOFT ROUND NET DUPATTA EMBELLISHED WITH STONE ALL OVER IT.	3195
5106	THIS SET IS A COMPOSITION OF BEIGE FLORAL ANARKALI IN ROUND NET BASE EMBROIDERED WITH OFF-WHITE THREAD, JARI, SPARKLE SEQUENCE & CODING SPREAD ALL OVER. IT IS PAIRED WITH SHANTOON BOTTOM & SOFT ROUND NET DUPATTA EMBELLISHED WITH STONE	3475
5107	FEATURING A BLACK FLORAL SLIT JACKET IN MULBERRY FABRIC AS ITS BASE, WITH GOLD FLORAL EMBROIDERY ON THE FRONT PANEL, COLLAR & SLEEVES IT IS PAIRED WITH GOLD MULBERRY FABRIC LEHANGA INCLUDED WITH SOFT ROUND NET WITH STONE WORK CHITTA ON IT.	2745
5108	THIS SET CONSISTS OF BLACK YOKE & SLEEVE IN SLUB GEORGETTE FABRIC BASE WITH GOLD SEQUENCE, CODING & JARI EMBROIDERY ATTACHED WITH ORANGE PHANTOM FABRIC, KALI GHERA ALONG WITH DHUPIAN BORDER & WORK ON IT. IT COMES ALONG WITH SHANTOON BOTTOM & SOFT ROUND NET DUPATTA NICELY STONE WORK SPREAD ALL OVER	2635