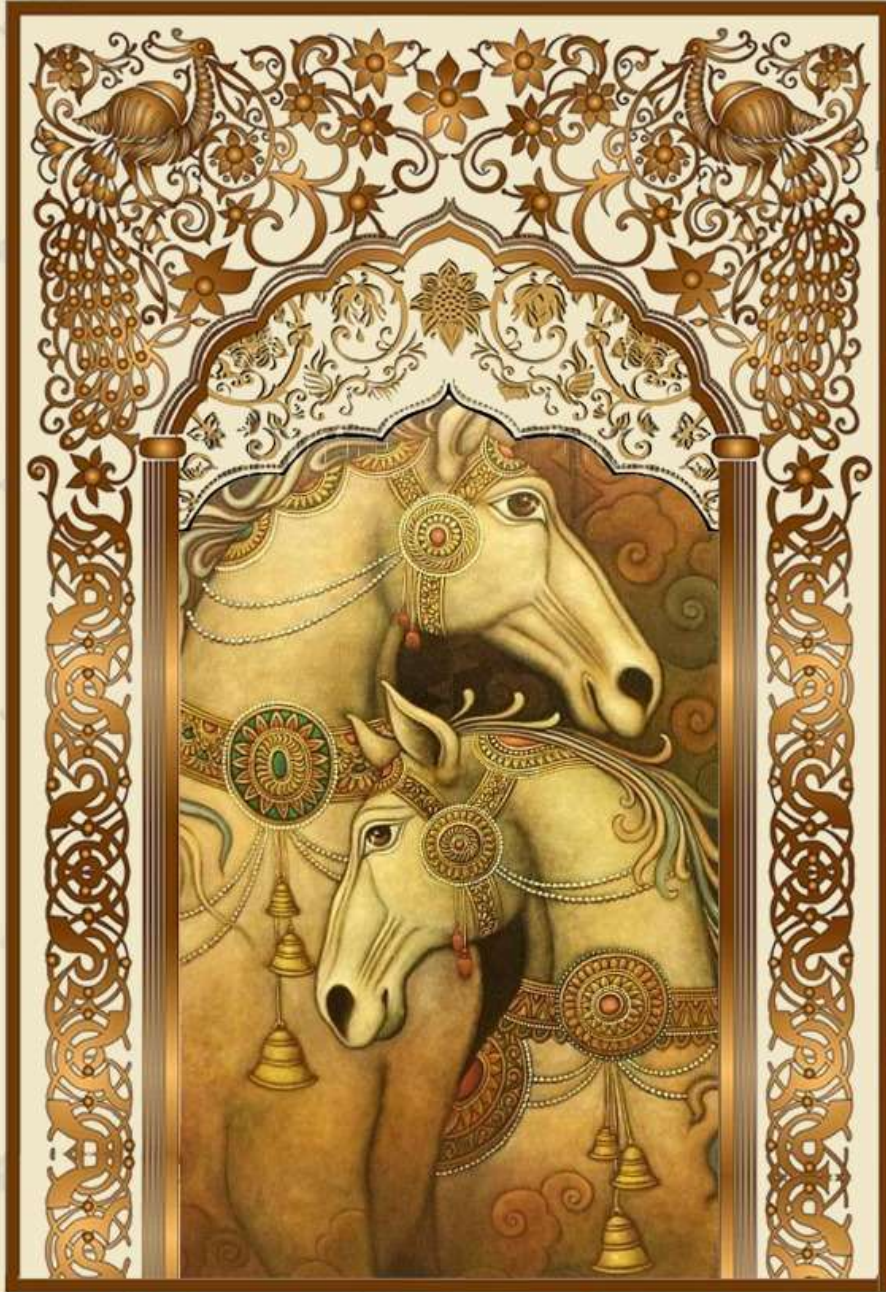




VIJAY SHANTI
Designer Cotton Suit



Heer



VIJAY SHANTI
Designer Cotton Suit

Heer

108



VIJAY SHANTI
Designer Cotton Suit

Heer

109





VIJAY SHANTI
Designer Cotton Suits

Heer

110





VIJAY SHANTI
Designer Cotton Suit

Heer

111





VIJAY SHANTI
Designer Cotton Suit

Heer

112





VIJAY SHANTI
Designer Cotton Suit

Heer

113





VIJAY SHANTI
Designer Cotton Suit

Heer

114





VIJAY SHANTI™
Designer Cotton Suit

Heer

115



VIJAY SHANTI™
Designer Cotton Suit

Heer

116



VIJAY SHANTI
Designer Cotton Suit

Heer

117





VS
VIJAY SHANTI
Designer Cotton Suit
Heer
118

The image features a woman modeling a traditional Indian cotton suit. The kurta is a vibrant orange color with a subtle floral pattern and is adorned with several large, intricate green floral motifs. It has a round neckline and long sleeves with decorative borders. The dupatta is a rich teal color with a wide, ornate border in orange and black, featuring a repeating floral pattern. The woman is also wearing teal leggings with small black floral prints and black high-heeled shoes. The background is a bright, minimalist interior with white walls and a window with a star-shaped pattern.



VIJAY SHANTI
Designer Cotton Suit

Heer

119





VIJAY SHANTI
Designer Cotton Suit

Heer

120



VIJAY SHANTI
Designer Cotton Suit

Heer

121





VIJAY SHANTI™
Designer Cotton Suit

Heer

122





VIJAY SHANTI
Designer Cotton Suits

Heer

123





VIJAY SHANTI
Designer Cotton Suit

Heer

124





VIJAY SHANTI
Designer Cotton Suit

Heer

125



