

MUGDIRA



• 202 •



MUGDHA®



• 201 •



MUGDIRA

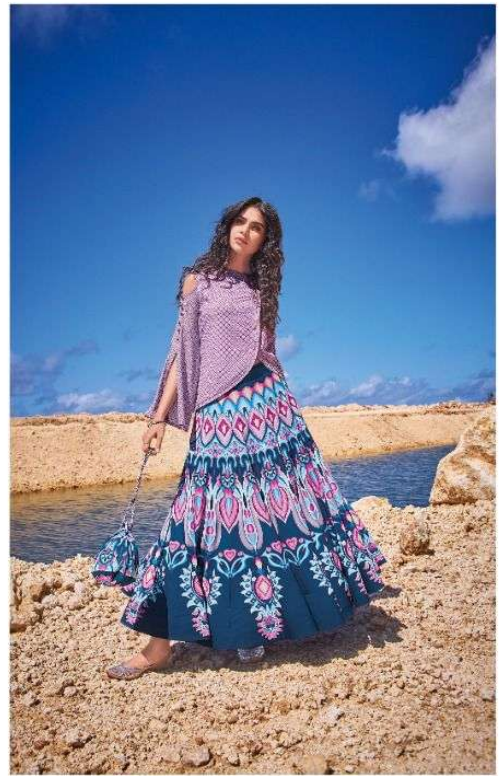


• 202 •





MUGDHA®



MUGDHA



206





| D.NO | FABRIC DETAILS                                                                       | USP                                                                                | RATE   |
|------|--------------------------------------------------------------------------------------|------------------------------------------------------------------------------------|--------|
| 201  | TOP : TWO TONE GLASS FABRIC<br>INNER : SANTOON<br>SKIRT : SILKY CREPE                | STYLISH SHIRT WITH JAIPURI GOTA ON POCKET DETAILING.DIGITAL PRINTED 18 KALI        | 1725/- |
| 202  | TOP : PURE VIOLA VISCOSE<br>INNER : SANTOON<br>SKIRT : MODAL SATIN                   | FRESH LEMON YELLOW SHIRT,WITH BEAUTIFUL SHARP MATCHING OF COLORS                   | 1735/- |
| 203  | TOP : SPRING LYCRA<br>INNER : SANTOON<br>SKIRT : SILK CREPE                          | SHIRT WITH DIGITAL PRINT WITH PATTERN ON SHIRT IN SLEEVES.                         | 1795/- |
| 204  | TOP : SPRING LYCRA<br>INNER : SANTOON<br>SKIRT : SILK CREPE                          | BEAUTIFUL PRINTED SHIRT WITH STREACHABLE FABRIC,WITH 18 KALI DIGITAL PRINTED SKIRT | 1825/- |
| 205  | TOP : PURE SOFT CHANDERI WITH LUREX CHECKS<br>INNER : SANTOON<br>SKIRT : SILKY CREPE | OFF-WHITE SHIRT WITH DIGITAL POCKET.WITH BRIGHT&UNIQUE COLOR PLAY                  | 1795/- |
| 206  | TOP : SLUB VIOLA SATIN<br>INNER : SANTOON<br>SKIRT : MODAL SATIN                     | SHADED PRINTED SKIRT,FERIVA SILK SLUB SATIN WITH BEADED COLLARN POCKET.            | 1895/- |

AVERAGE PRICE :1795/- FULL SET PRICE :10770/- SIZE AVAILABLE:M,L,XL,XXL



• 201 •



• 202 •



• 205 •



• 203 •



• 204 •



• 206 •

MUGDHA®

*Mishka*