

 psyna®

Poncho



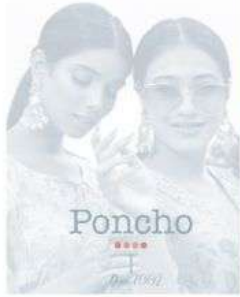
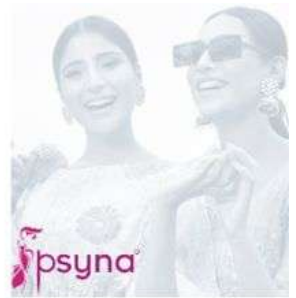


psyna

Poncho  
—  
Dress

*Perfect design*  
The perfect design is not just a matter of style, but of function. It is a design that is both beautiful and practical, that is both fashionable and comfortable. It is a design that is both timeless and modern, that is both classic and contemporary. It is a design that is both simple and sophisticated, that is both elegant and casual. It is a design that is both functional and decorative, that is both useful and beautiful. It is a design that is both practical and stylish, that is both functional and fashionable. It is a design that is both simple and complex, that is both easy and difficult. It is a design that is both functional and decorative, that is both useful and beautiful. It is a design that is both practical and stylish, that is both functional and fashionable. It is a design that is both simple and complex, that is both easy and difficult.





psyna

Poncho

2023

*Essence of perfection*

Perfection is not something that comes from within. It is the result of a long and hard journey. It is the result of a long and hard journey. It is the result of a long and hard journey.





psyna

*Bring fresh*

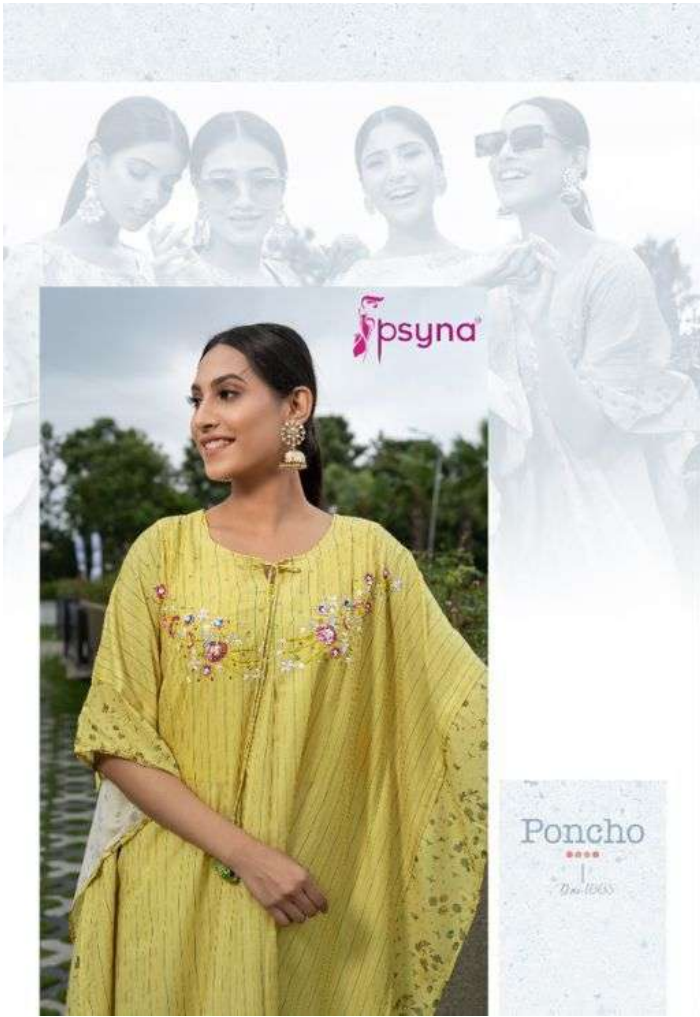
Introducing the newest concept in fashion, a collection of fresh, modern, and elegant designs. Bringing you the best of both worlds, with a focus on comfort and style. The new collection is designed to bring you the best of both worlds, with a focus on comfort and style.



Poncho

\*\*\*  
Dress to Impress







Poncho



Don 1951

Don 1952

Don 1953



Don 1954

Don 1955