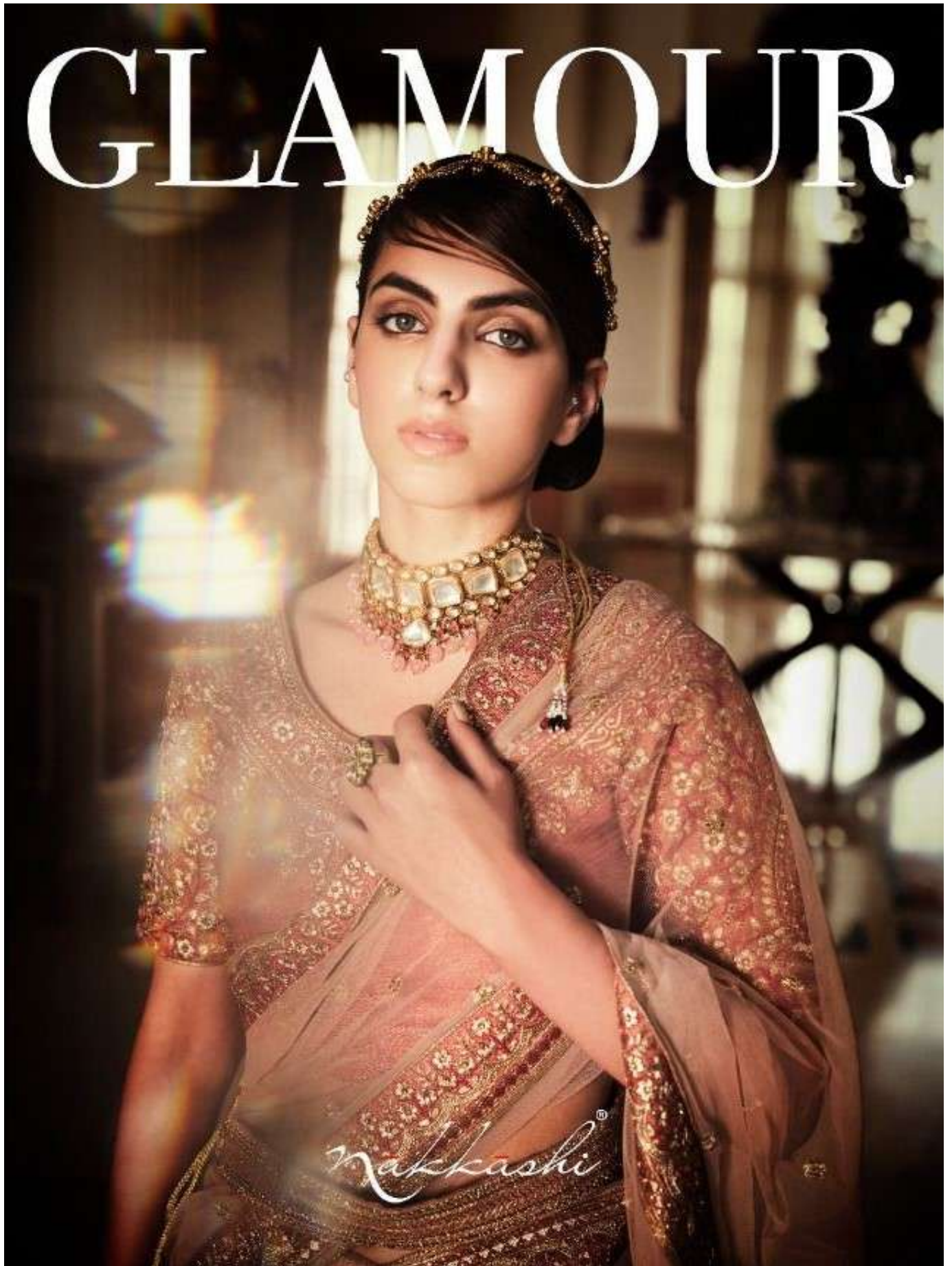
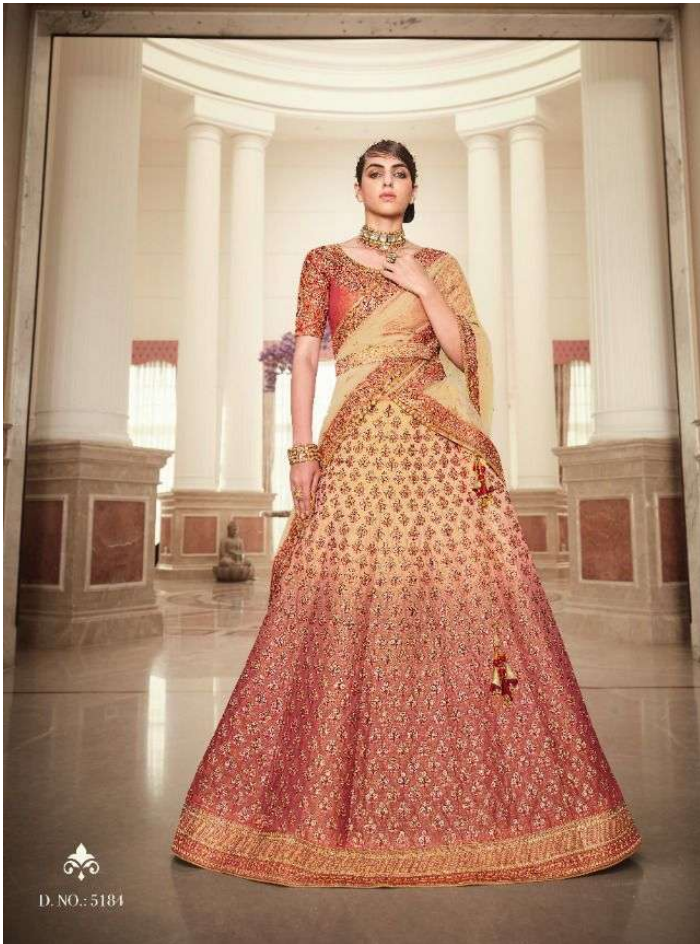
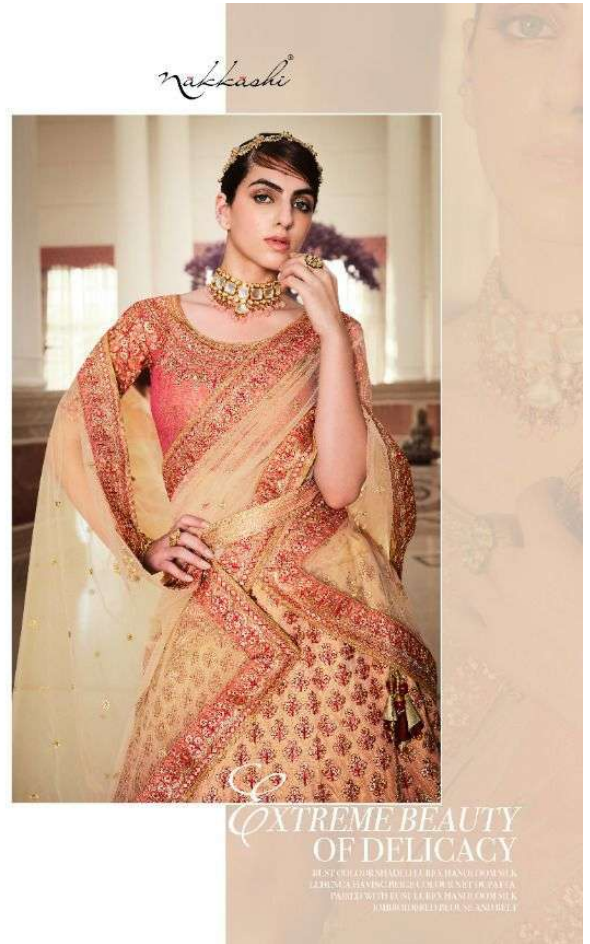


# GLAMOUR





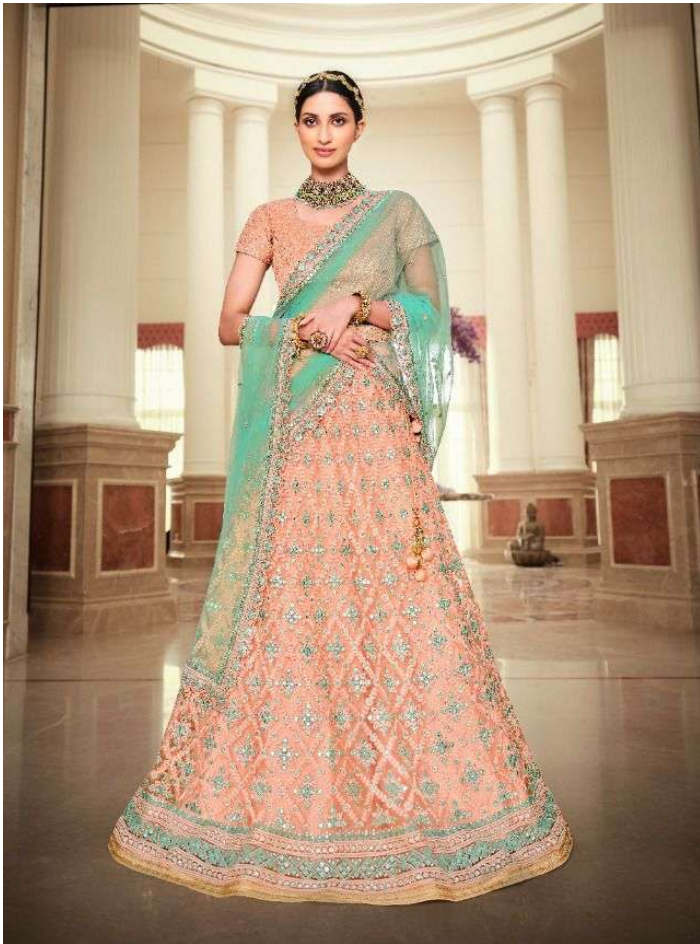
  
D.NO.: 5184



*nakkashi*

*EXTREME BEAUTY  
OF DELICACY*

BEST QUALITY SHIMMERING BEA HANDED WORK  
LEHREKA HANDICRAFTED BY WISSEY OF JALGA  
PALETTE WITH BEA HANDED WORK  
EMBROIDERED PROUSE AND BELT



*nakkashi*

  
D. NO: 5185



D. NO.: 5186



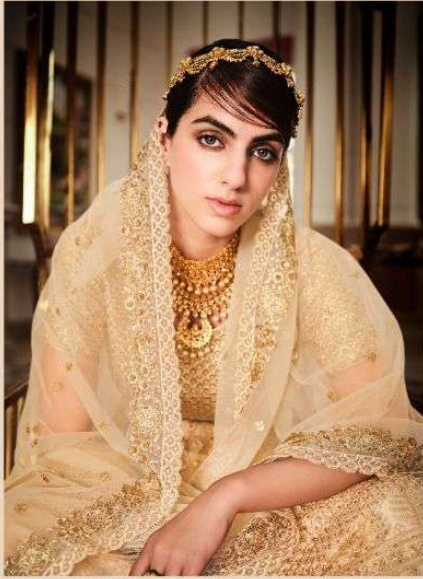
SARTORIAL  
ELEGANCE

DESIGNER: CREATIVE LADIES BY ANITA DOLY. FABRIC: COTTON. COLOR: PASTEL GREEN. LENGTH: 5 FT 10 IN. WIDTH: 45 IN. WITH A NECKLINE.



18 NO. 5187

*nakkashi*



D.NO: 5188

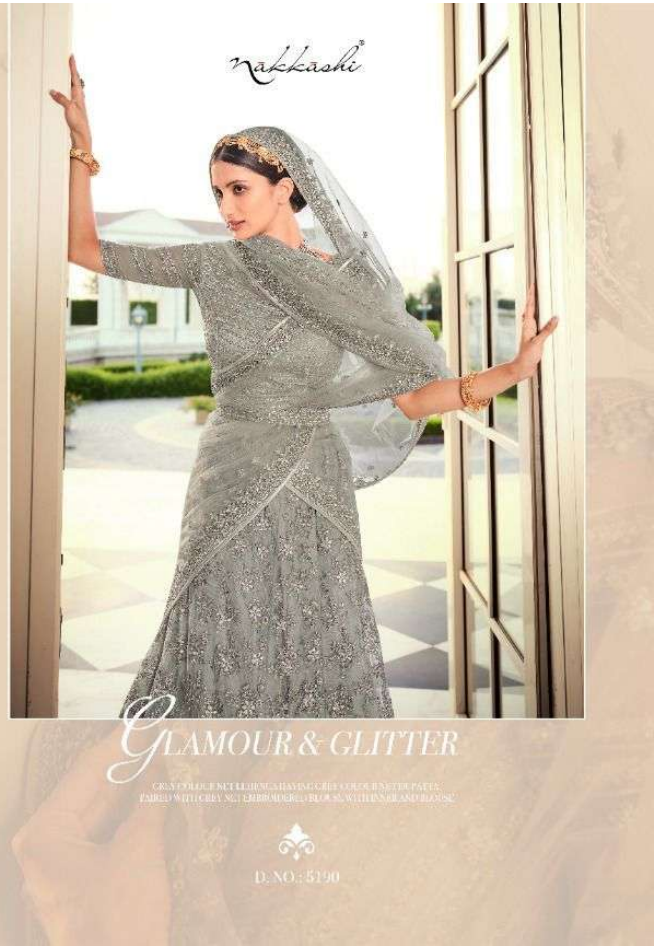


**CULTURAL ETHNICS**

DESIGN: LIZZY BERNARDI  
 MODEL: PAVLA  
 FABRIC: SILK  
 EMBROIDERY: KASHMIRI  
 BLEND: 100% SILK

D. NO.: 5189





*Glamour & Glitter*

GRAYS FORMAL WEAR DESIGNER HAS ANG CHAISE BOUTIQUE PARIS  
FABRIC WITH CRYSTAL EMBROIDERY IN SILVER WITH NEAR AND BLOND



D.NO: 5190





D.NO.: 5184



D.NO.: 5185



D.NO.: 5188



D.NO.: 5189



D.NO.: 5186



D.NO.: 5187



D.NO.: 5190

*nakkashi*

# GLAMOUR

NO	D.NO	DESCRIPTION	CANCAN BUCRAM	RATE
1	5184	Rust colour shaded lurex handloom silk lehenga having beige colour net dupatta paired with rust lurex handlom silk embroidered blouse and belt	YES	5555
2	5185	Peach colour net lehenga having sky blue colour net duppata paired with peach handloom silk embroidered blouse and belt	YES	4995
3	5186	Aqua colour net lehenga having aqua colour net duppata paired with aqua net embroidered nlose with inner and belt	YES	5505
4	5187	Pista green colour net lehenga having pista green colour net duppata paired with pista green embroidered blouse with inner and belt	YES	4795
5	5188	Beige colour net lehenga having beige colour net duppata paired with beige net embroidered blouse with inner and belt	YES	4345
6	5189	Pink colour net lehenga having pink colour duppata paired with pink net embroidred blouse with inner and belt	YES	4975
7	5190	grey colour net lehenga having grey colour net duppata paired with grey net embroidered blouse with with inner and belt	YES	4305
TOTAL				34475
AVERAGE 4925/-				