

WESTERN TUNICS SHIRTS

FABRIC - PURE KHADI WITH LINING
WEAVING

TYPE - STITCHED

SIZE - S(36),M(38),L(40),XL(42),XXL(44)

LENGTH - 31 INCH

WEIGHT - 0.25 KG



2022



WESTERN TUNICS SHIRTS

FABRIC - PURE KHADI WITH LINING
WEAVING

TYPE - STITCHED

SIZE - S(36),M(38),L(40),XL(42),XXL(44)

LENGTH - 31 INCH

WEIGHT - 0.25 KG



2022



WESTERN TUNICS SHIRTS

FABRIC - PURE KHADI WITH LINING
WEAVING

TYPE - STITCHED

SIZE - S(36),M(38),L(40),XL(42),XXL(44)

LENGTH - 31 INCH

WEIGHT - 0.25 KG



2023



WESTERN TUNICS SHIRTS

FABRIC - PURE KHADI WITH LINING
WEAVING

TYPE - STITCHED

SIZE - S(36),M(38),L(40),XL(42),XXL(44)

LENGTH - 31 INCH

WEIGHT - 0.25 KG

2024

READY TO
DISPATCH



WESTERN TUNICS SHIRTS

FABRIC - PURE KHADI WITH LINING
WEAVING

TYPE - STITCHED

SIZE - S(36),M(38),L(40),XL(42),XXL(44)

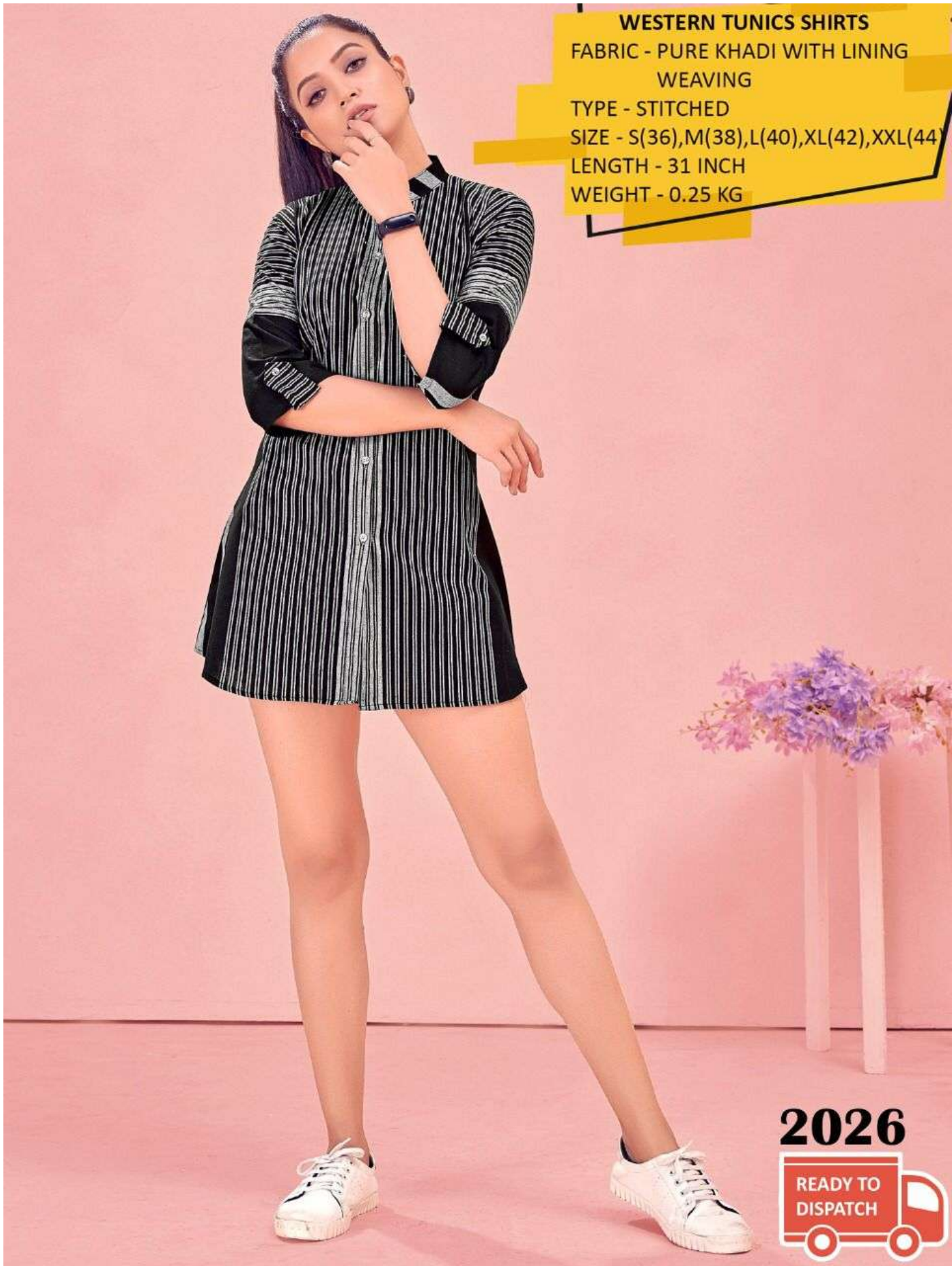
LENGTH - 31 INCH

WEIGHT - 0.25 KG



2025

READY TO
DISPATCH



WESTERN TUNICS SHIRTS

FABRIC - PURE KHADI WITH LINING
WEAVING

TYPE - STITCHED

SIZE - S(36),M(38),L(40),XL(42),XXL(44)

LENGTH - 31 INCH

WEIGHT - 0.25 KG

2026



WESTERN TUNICS SHIRTS

FABRIC - PURE KHADI WITH LINING
WEAVING

TYPE - STITCHED

SIZE - S(36),M(38),L(40),XL(42),XXL(44)

LENGTH - 31 INCH

WEIGHT - 0.25 KG



2027

