



**KHAYYIRA** SUITS™

*FEEHA HIT DESIGN*



**D.No.1020-A**

TOP - GEORGETTE WITH HEAVY  
EMBROIDERY

INNER BOTTOM - DULL SANTOON WITH  
PATCH WORK

DUPATTA - NET HEAVY

EMBROIDERY WITH LATKAN





**KHAYYIRA** SUITS™

*FEEHA HIT DESIGN*



D.No.1020-A

TOP - GEORGETTE WITH HEAVY  
EMBROIDERY  
INNER BOTTOM - DULL SANTOON WITH  
PATCH WORK  
DUPATTA - NET HEAVY  
EMBROIDERY WITH LATKAN





D.NO - 1026

**TOP** - GEORGETTE WITH HEAVY EMBROIDERY LACE  
**INNER BOTTOM** - DULL SANTOON WITH EMBROIDERY PATCH  
**DUPATTA** - NAZNEEN WITH HEAVY EMBROIDERY



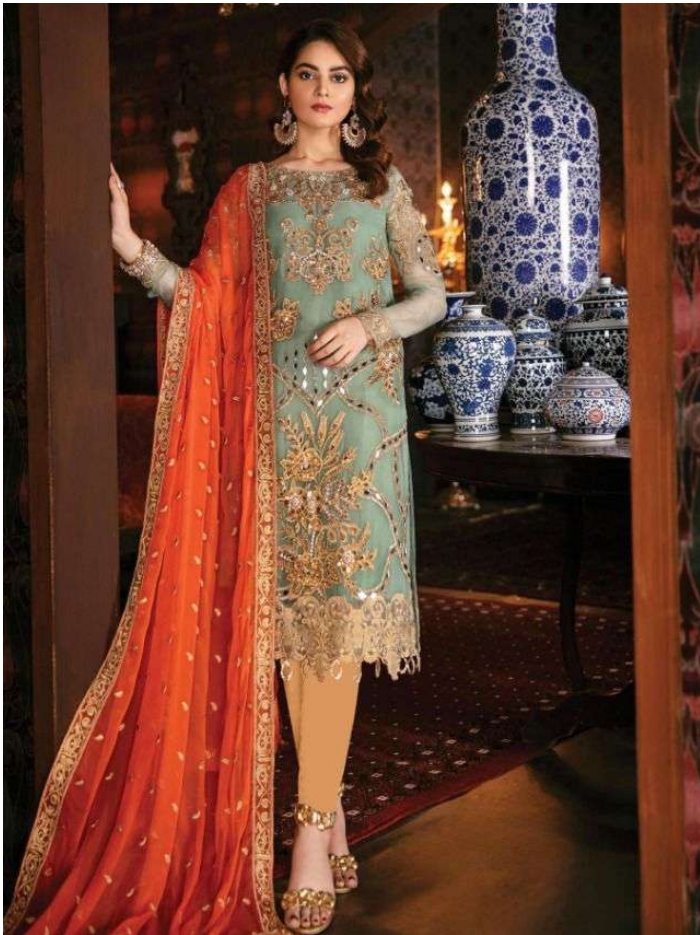
**K** SUITS  
**HAYYIRA**™



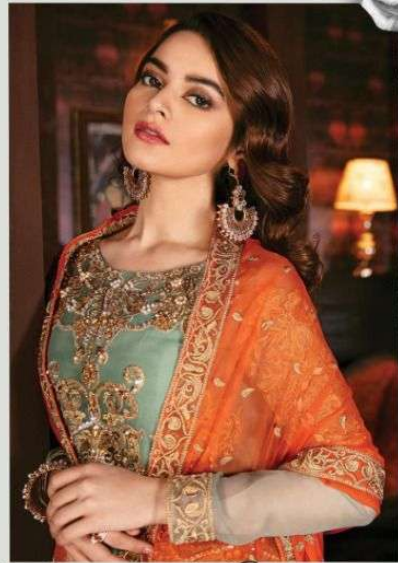
D.NO - 1029

**TOP** - GEORGETTE WITH HEAVY EMBROIDERY LACE  
**INNER BOTTOM** - DULL SANTOON WITH EMBROIDERY PATCH  
**DUPATTA** - NAZNEEN WITH HEAVY EMBROIDERY





KHAYYIRA<sup>SM</sup>  
SUILS



D.NO.1032

AQUA  
*Jewel*

TOP - GEORGETTE HEAVY EMBROIDERED  
INNER BOTTOM - DULL SANTOON  
DUPATTA - NAZNEEN HEAVY EMBROIDERED



KHAYYIRA SUITS™



MAGNIFIQUE

Jade

D.NO.1034

TOP - GEORGETTE HEAVY EMBROIDERED  
INNER BOTTOM - DULL SANTOON WITH EMB PATCH  
DUPATTA - NAZNEEN HEAVY EMBROIDERED





**K** SUITS  
**HAYYIRA**

**D.NO.1050**



**Top - Georgette heavy embroidered**  
**Inner Bottom - Santoon silk**  
**Dupatta - Nazneen heavy embroidered**



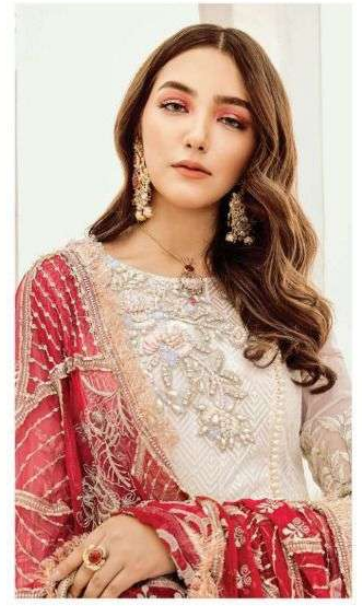
**K** SUITS  
**HAYYIRA**

**D.NO.1053-B**



**Top - Georgette heavy embroidered  
Inner Bottom - Santoon silk with emb patch  
Dupatta - Net embroidered with lace**





Top - Georgette heavy embroidered with neck emb patch semi stitched  
Inner Bottom - Santoon silk  
Dupatta - Nazneen heavy embroidered with four side readymade lace



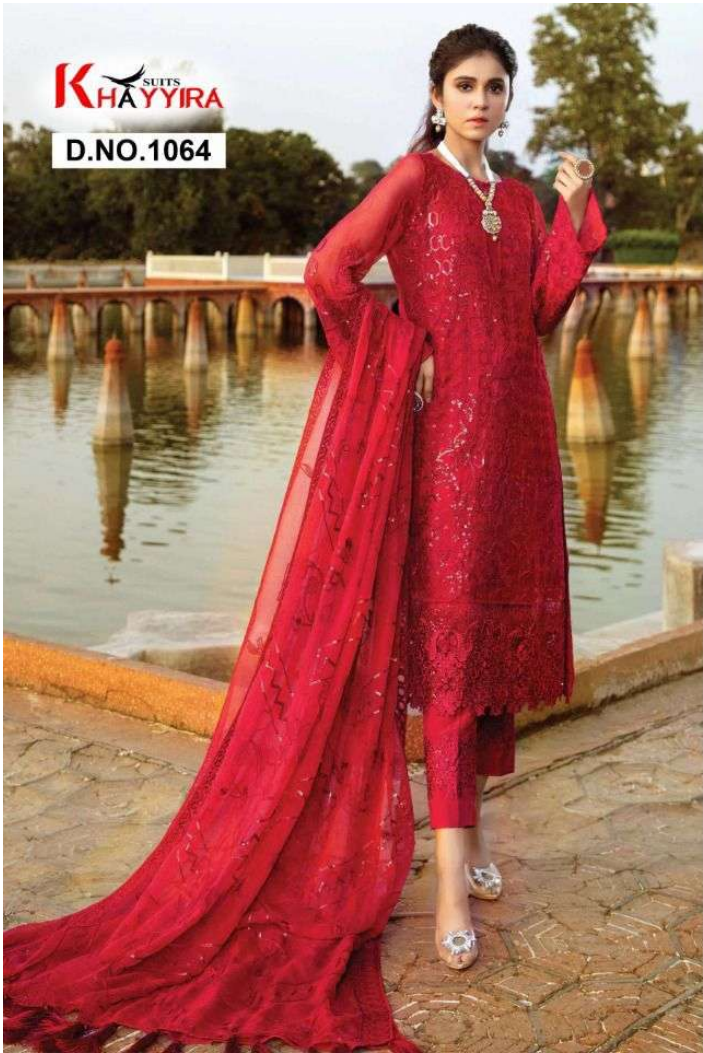


**K** SUITS  
**HAYYIRA**

**D.NO.1061-A**

**Top - Georgette heavy sequence embroidered**  
**Inner Bottom - Santoon Silk**  
**Dupatta - Nazneen embroidered**





**KHAYYIRA**  
SUNITS

**D.NO.1064**



**Top - Georgette heavy embroidered  
Inner Bottom - Santoon with bottom emb patch  
Dupatta - Nazneen heavy embroidered**



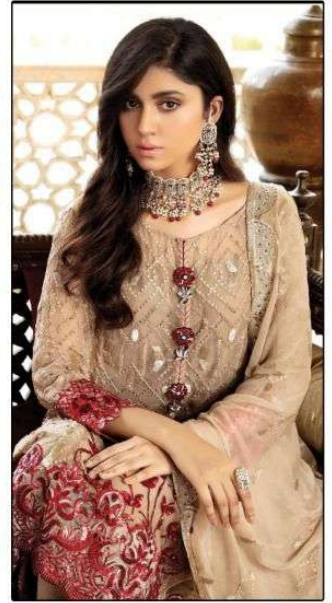


**Top - Georgette heavy embroidered**  
**Inner Bottom - Santoon with bottom emb patch**  
**Dupatta - Nazneen heavy embroidered**





**Top - Georgette heavy embroidered**  
**Inner Bottom - Santoon with bottom emb patch**  
**Dupatta - Nazneen heavy embroidered**



**Top - Georgette heavy embroidered**  
**Inner Bottom - Santoon silk**  
**Dupatta - Nazneen heavy embroidered**