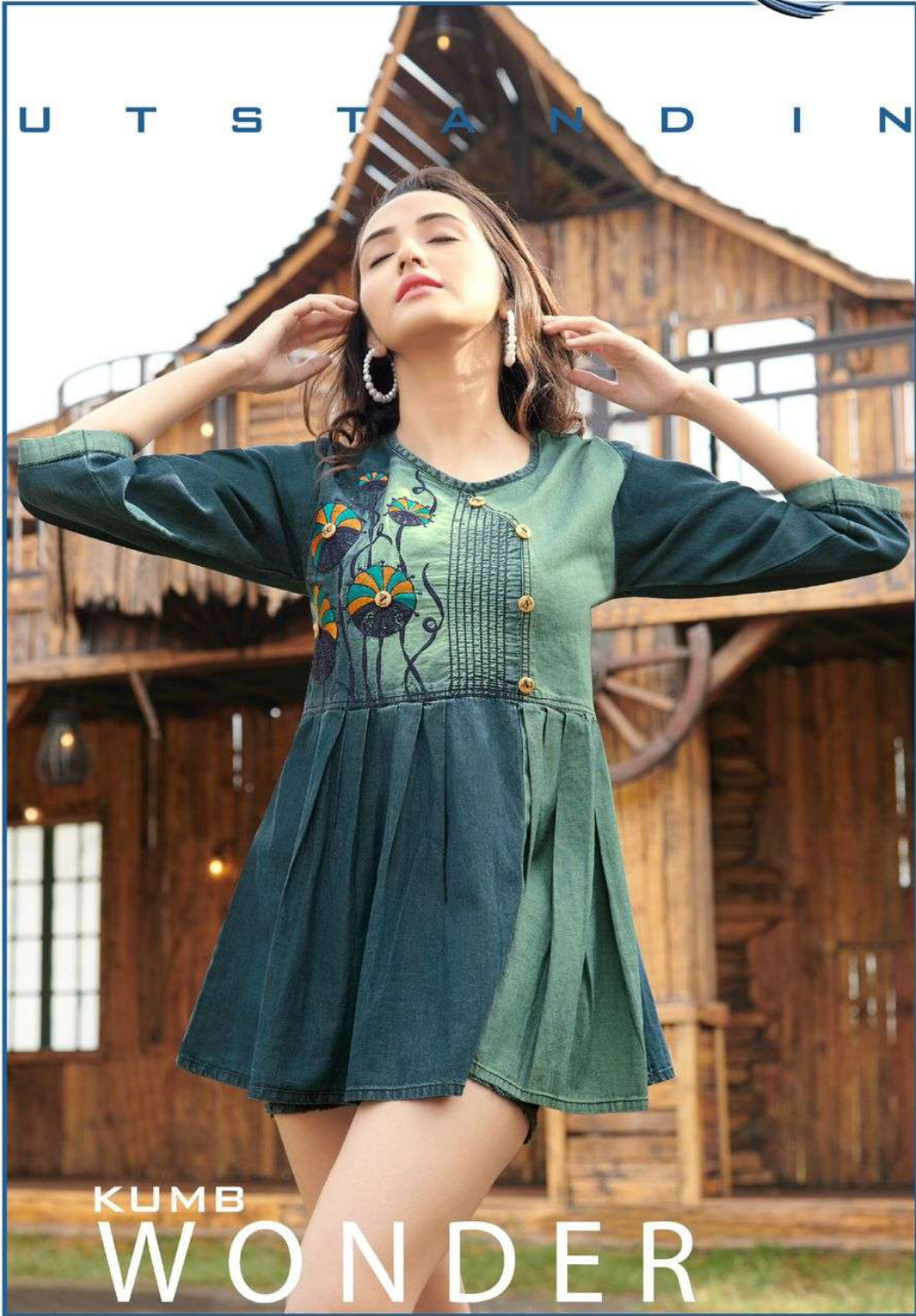




O U T S T A N D I N G



KUMB
WONDER



I M P R A T I O N

DESIGN
1058

A woman with long, wavy brown hair is standing in front of a rustic wooden barn. She is wearing a green, long-sleeved, button-down dress with a floral embroidery on the chest and a pleated skirt. She is also wearing white sneakers with black and white checkered patterns. She is leaning against a wooden fence made of logs. The barn behind her has a balcony with a railing and a sign that says "BAR". There are several bottles on the balcony. The overall scene is outdoors with green grass and a clear sky.

Seriemá

C A P T U R E

DESIGN
1059



B O N Z O V I

DESIGN
1060



Seriema

DESIGN
1061

I M P A C T

A woman with long, wavy brown hair is posing in front of a rustic wooden barn. She is wearing a dark denim dress with a button-down front and a smocked bodice. The dress features two bicycle graphics on the lower half, each with a small red heart. She is also wearing dark denim shorts, white socks with blue stripes, and white sneakers with a black and white checkered pattern on the side. She is leaning against a wooden railing. The barn behind her has a balcony with a metal railing and a large wooden wheel on the wall. The sky is overcast.

Seriema

DESIGN
1062

A woman with long dark hair is posing on a wooden balcony. She is wearing a black long-sleeved tunic with a central floral embroidery in blue and white, and black shorts. Her hands are raised behind her head. She is wearing white sneakers with black and white checkered accents. The background is a rustic wooden building with a balcony railing.

Seriema

DESIGN
1063







DESIGN-1058



DESIGN-1059



DESIGN-1060



DESIGN-1061



DESIGN-1062



DESIGN-1063



DESIGN-1064



DESIGN-1065