

A close-up portrait of a woman with dark, wavy hair and blue eyes. She is wearing a light green sari with a gold border. She is holding a large, ornate, silver-colored ring with intricate floral patterns to her lips. The background is a soft, out-of-focus grey. In the top left corner, there is a purple square with a white heart icon and the word "NISH" in white capital letters. At the bottom, the words "JIL MILL" are written in large, bold, yellow 3D letters.

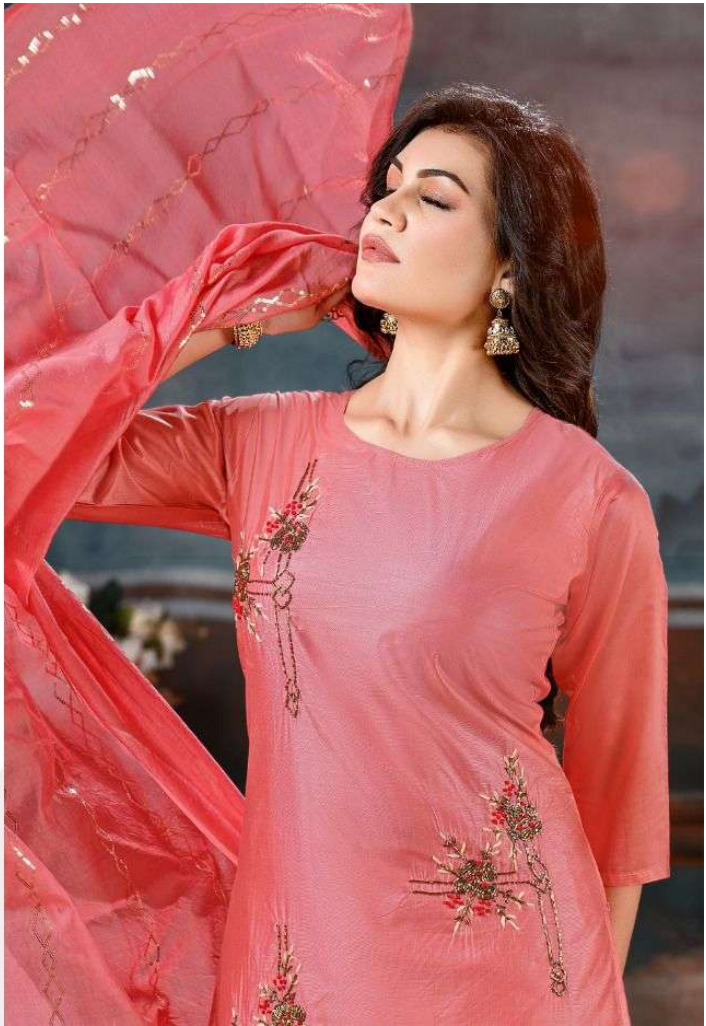
NISH

JIL MILL



Power of fashion

there is beauty in all things you just need to look close enough.
style is a simple way of saying complicated things





REVIVING THE ART

Accentuate the beauty of your love towards and diversified tradition with each apparel from this collection these designer apparel capture the attention of everyone wherever you go..

**JIL MIL
102**

NISH





make every moment an alluring minute with this sense stealing piece, which is still sure into your season wardrobe essential.

NISH





NISH

JIL MIL
104

Sweetness
Queen

there is beauty in all things you just need to look close enough. style is a simple way of saying complicated things





Aspire *dream* hope graceful enlightenment with catchiest statement



NISH

JIL MIL
106



fashion is about dressing and style is more about being yourself





101



102



103



104



105



106

JIL MIL

