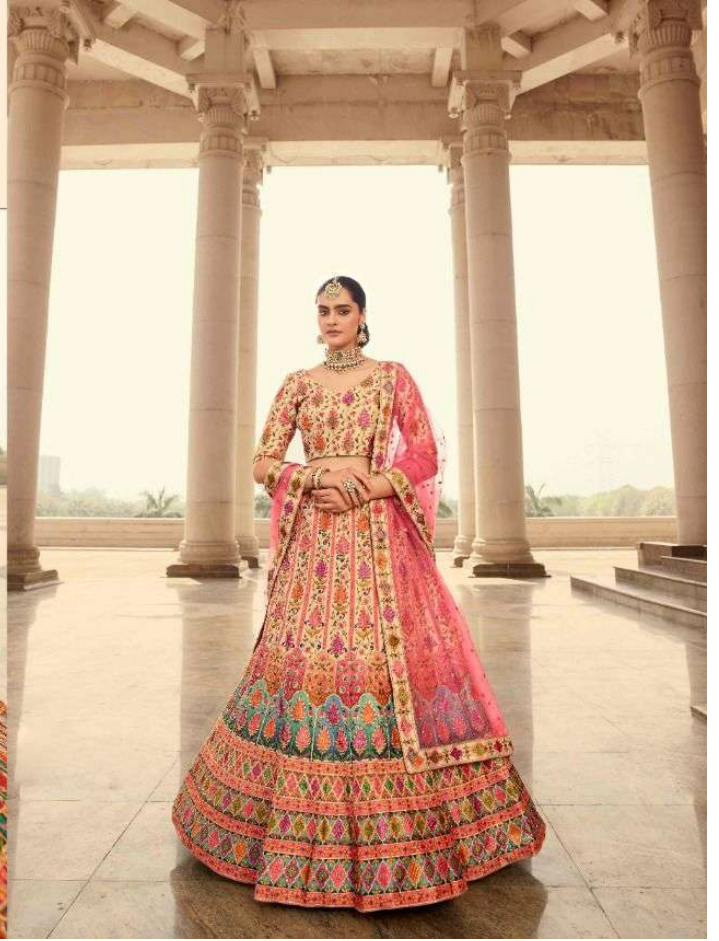
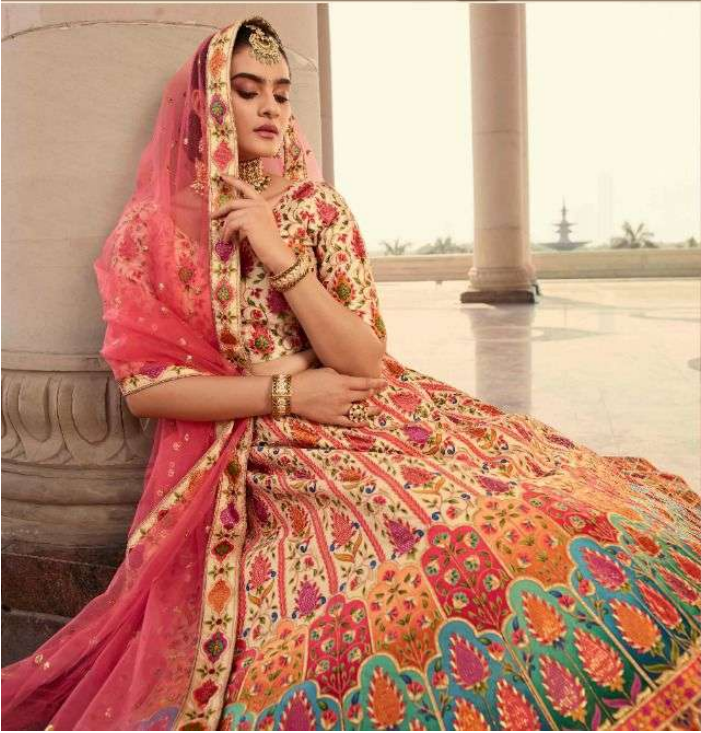


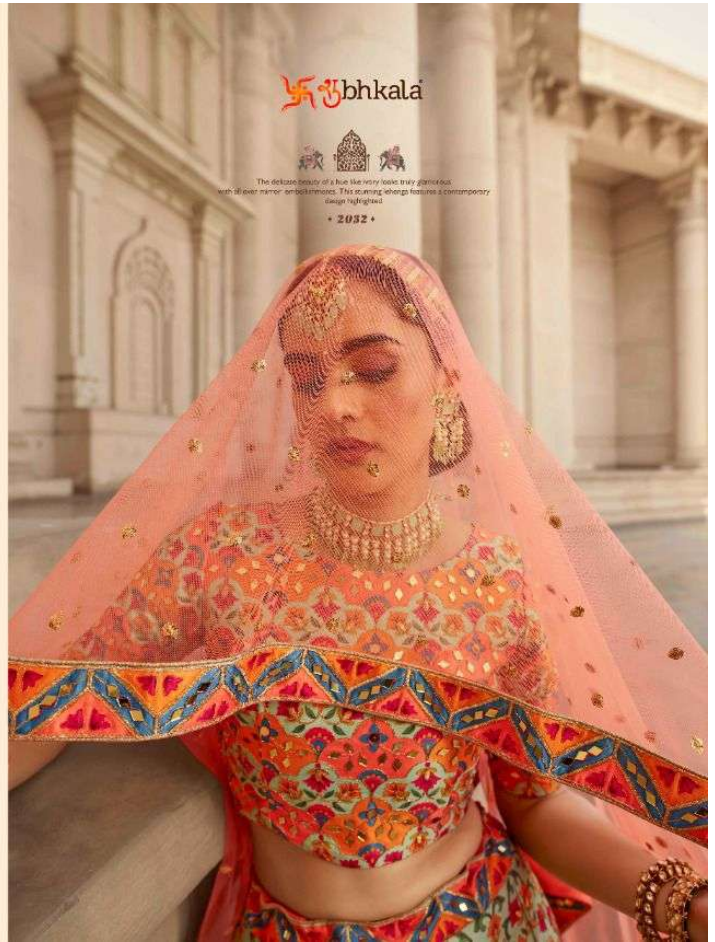
Swastika bhkala

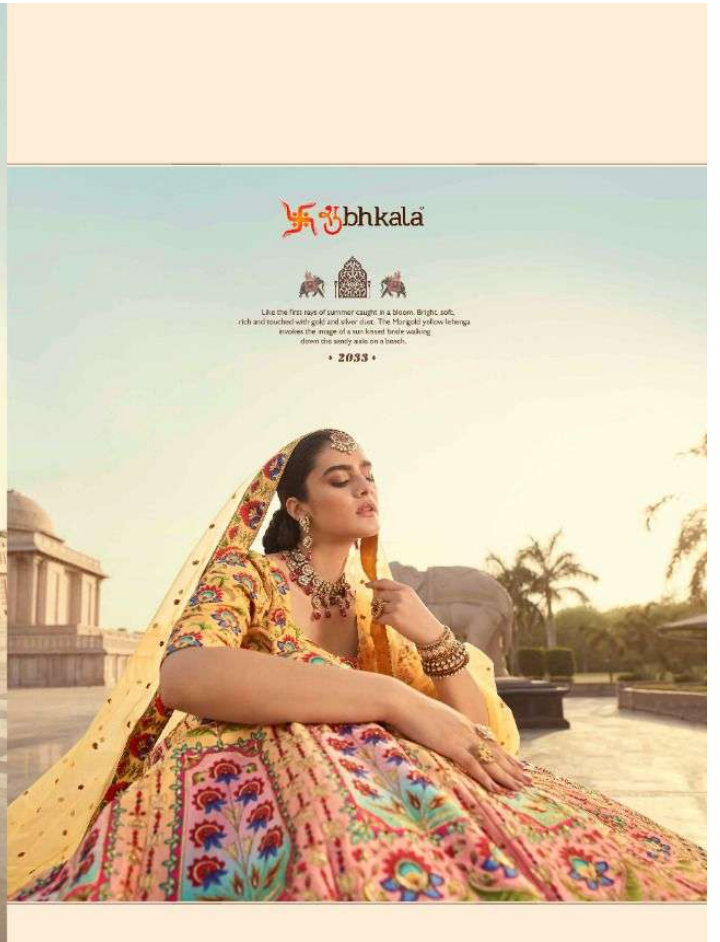


Poping up bright hues on an ivory palette with a scattering of delicate floral motifs - it's just the right combination for a day wedding. It adds to that serene mood, without giving up on traditional charm.

• 2031 •

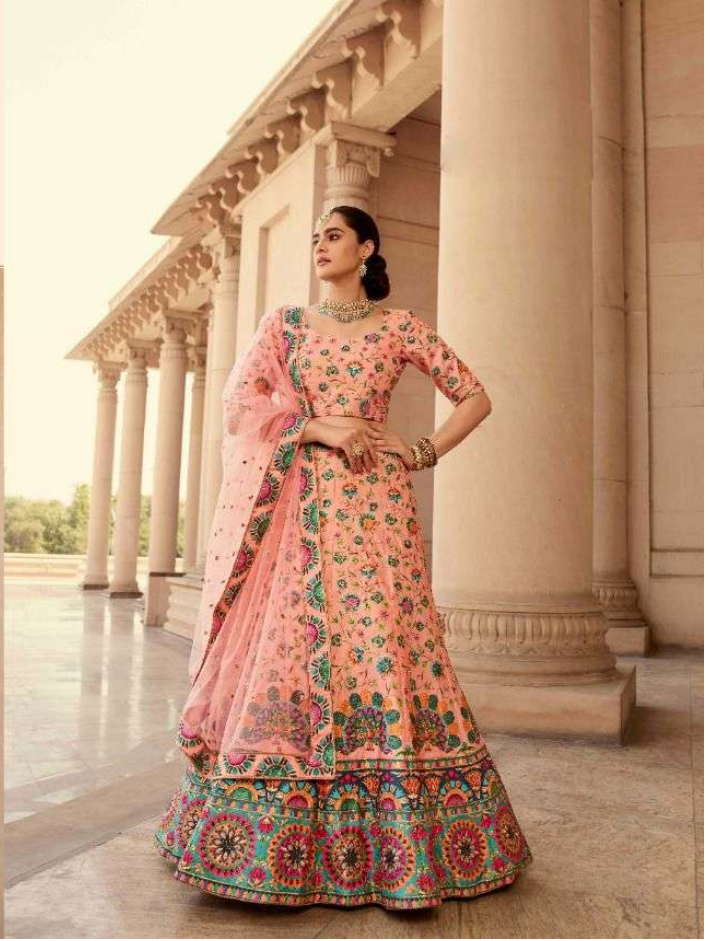






Swastika bhkala

The delicate beauty of a hue like ivory  
looks truly glamorous  
with all over mirror work embroidery.  
The swirling lehenga features a contemporary  
design highlighted  
• 2034 •





• 2031 •



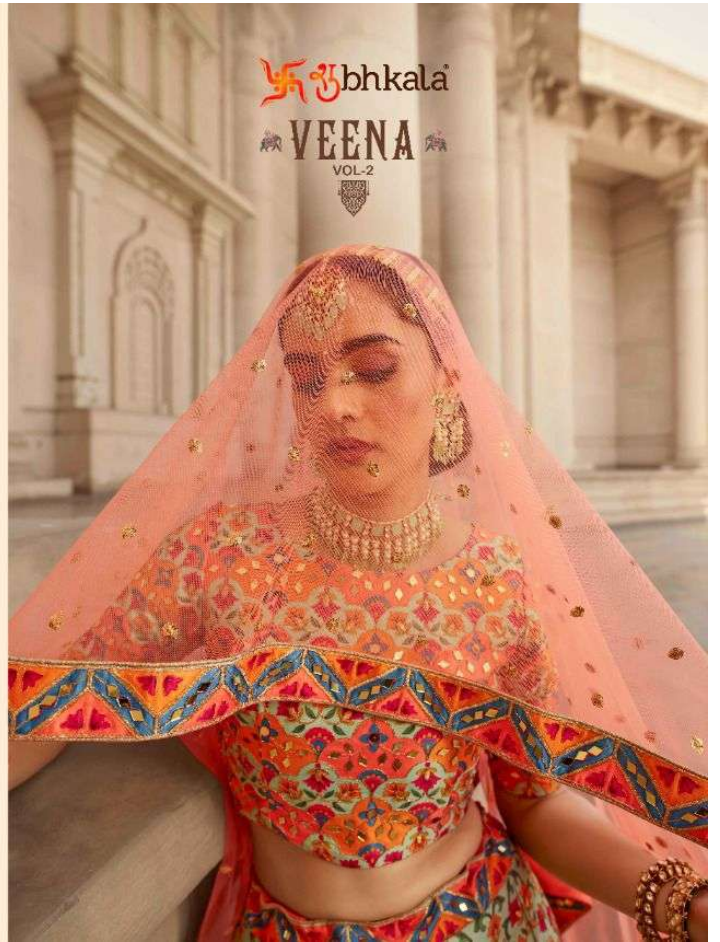
• 2032 •



• 2033 •



• 2034 •





Design NO. (SKU)	Main Color	Lehenga Fabric	Choli Fabric	Dupatta Fabric	Size (Semi-Stitched)	Lehenga Work	Choli Work	Dupatta Work	Choli Length MTR	Lehenga Length MTR	Dupatta Length MTR	Weight
2031	Beige – Pink	Art Silk	Art Silk	NET	UPTO 42 BUST AND WAIST	Embroidery With Print And Swarovski Work	Embroidery With Print And Swarovski Work	Embroidery With Print And Swarovski Work	1 MTR	42 INCH	2.40 MTR	3 KG
2032	Multi Color	Art Silk	Art Silk	NET	UPTO 42 BUST AND WAIST	Embroidery With Print And Mirror Work	Embroidery With Print And Mirror Work	Embroidery With Print And Mirror Work	1 MTR	42 INCH	2.40 MTR	3 KG
2033	Yellow	Art Silk	Art Silk	NET	UPTO 42 BUST AND WAIST	Embroidery With Print And Diamond Work	Embroidery With Print And Diamond Work	Embroidery With Print And Diamond Work	1 MTR	42 INCH	2.40 MTR	3 KG
2034	Peach	Art Silk	Art Silk	NET	UPTO 42 BUST AND WAIST	Embroidery With Print And Swarovski Work	Embroidery With Print And Swarovski Work	Embroidery With Print And Swarovski Work	1 MTR	42 INCH	2.40 MTR	3 KG

THIS BOOK / CATALOGUE / LOGO / ARE PROTECTED UNDER COPYRIGHT ACT.  
 AN ILLEGAL/UNAUTHORIZED REPRINT, PUBLISHING, REPRODUCTION, DISTRIBUTION AND MODIFICATION OF ANY IMAGES, PHOTOGRAPHS AND PRODUCTS,  
 TOTALLY OR IN PART, FOR ANY PURPOSE, REASON OR CAUSE IS STRICTLY PROHIBITED AND PUNISHABLE UNDER LAW.