



FABRIC DETAILS
TOP. GEORGETTE WITH EMBROIDERY
DUPATTA. BUTTERFLY NET
INNER. SANTOON
BOTTOM. SANTOON

- Ⓢ DRY CLEAN ONLY.
- ✘ DO NOT USE ANY BLEACH OR STAIN REMOVING CHEMICAL.
- ☐ IRON THE FABRIC AT MODERATE TEMPERATURE.



FABRIC DETAILS
TOP. GEORGETTE WITH EMBROIDERY
DUPATTA. BUTTERFLY NET
INNER. SANTOON
BOTTOM. SANTOON

- Ⓢ DRY CLEAN ONLY.
- ✘ DO NOT USE ANY BLEACH OR STAIN REMOVING CHEMICAL.
- ☐ IRON THE FABRIC AT MODERATE TEMPERATURE.

SLEEVES



EMB FRONT



FABRIC DETAILS	GEORGETTE WITH
TOP	EMBROIDERY
DUPATTA	BUTTERFLY NET
INNER	SANTOON
BOTTOM	SANTOON

* DRY CLEAN ONLY
 * DO NOT USE ANY BLEACHER FROM REMOVING STAINS
 * WASH THE FABRIC AT MODERATE TEMPERATURE

EMB DUPATTA



FABRIC DETAILS
TOP. GEORGETTE WITH EMBROIDERY
DUPATTA. BUTTERFLY NET
INNER. SANTOON
BOTTOM. SANTOON

- Ⓢ DRY CLEAN ONLY.
- ✘ DO NOT USE ANY BLEACH OR STAIN REMOVING CHEMICAL.
- ☐ IRON THE FABRIC AT MODERATE TEMPERATURE.

SLEEVES

EMB FRONT

EMB DUPATTA





FABRIC DETAILS
TOP. GEORGETTE WITH EMBROIDERY
DUPATTA. BUTTERFLY NET
INNER. SANTOON
BOTTOM. SANTOON

- ☉ DRY CLEAN ONLY.
- ✘ DO NOT USE ANY BLEACH OR STAIN REMOVING CHEMICAL.
- ☐ IRON THE FABRIC AT MODERATE TEMPERATURE.

SLEEVES

EMB FRONT

EMB DUPATTA





FABRIC DETAILS
TOP. GEORGETTE WITH EMBROIDERY
DUPATTA. BUTTERFLY NET
INNER. SANTOON
BOTTOM. SANTOON

- Ⓢ DRY CLEAN ONLY.
- ✘ DO NOT USE ANY BLEACH OR STAIN REMOVING CHEMICAL.
- ☐ IRON THE FABRIC AT MODERATE TEMPERATURE.

SLEEVES



EMB FRONT



EMB DUPATTA



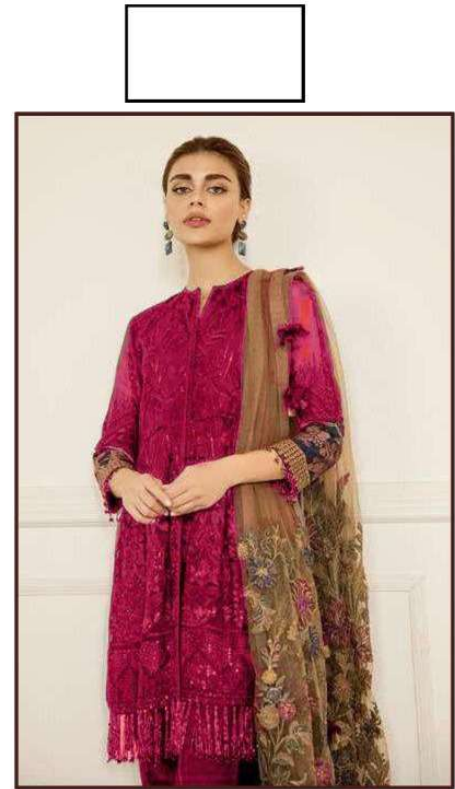
PUSHP
D.NO.1035 D

FABRIC DETAILS
 TOP: GEORGETTE WITH EMBROIDERY
 DUPATTA: BUTTERFLY NET
 INNER: SANTOON
 BOTTOM: SANTOON

DRY CLEAN ONLY
 DO NOT USE ANY BLEACH OR STAIN REMOVING AGENTS.
 DO NOT IRON FABRIC AT HIGH TEMPERATURES.




pushp
CREATION
D.NO.:1035 E



FABRIC DETAILS
TOP. GEORGETTE WITH EMBROIDERY
DUPATTA. BUTTERFLY NET
INNER. SANTOON
BOTTOM. SANTOON

- Ⓢ DRY CLEAN ONLY.
- ✘ DO NOT USE ANY BLEACH OR STAIN REMOVING CHEMICAL.
- ☐ IRON THE FABRIC AT MODERATE TEMPERATURE.

EYES

EMB FRONT

EMB DUPATTA





FABRIC DETAILS
TOP. GEORGETTE WITH EMBROIDERY
DUPATTA. BUTTERFLY NET
INNER. SANTOON
BOTTOM. SANTOON

- Ⓢ DRY CLEAN ONLY.
- ✘ DO NOT USE ANY BLEACH OR STAIN REMOVING CHEMICAL.
- ☐ IRON THE FABRIC AT MODERATE TEMPERATURE.

SLEEVES

EMB FRONT

EMB DUPATTA





FABRIC DETAILS
TOP. GEORGETTE WITH EMBROIDERY
DUPATTA. BUTTERFLY NET
INNER. SANTOON
BOTTOM. SANTOON

- Ⓢ DRY CLEAN ONLY.
- ✘ DO NOT USE ANY BLEACH OR STAIN REMOVING CHEMICAL.
- ☐ IRON THE FABRIC AT MODERATE TEMPERATURE.

SLEEVES



EMB FRONT



EMB DUPATTA



PILKHA
D.NO.-1035 G

FABRIC DETAILS
 TOP: GEORGETTE WITH EMBROIDERY
 DUPATTA: BUTTERFLY NET
 INNER: SANTOON
 BOTTOM: SANTOON

CARE INSTRUCTIONS:
 1. DRY CLEAN ONLY
 2. DO NOT USE ANY BLEACH OR OTHER REMOVING CHEMICALS
 3. IRON THE FABRIC AT MEDIUM TEMPERATURE



D.NO.:1035 A



D.NO.:1035 B



D.NO.:1035 C



D.NO.:1035 D



D.NO.:1035 E



D.NO.:1035 F



FABRIC DETAILS
TOP. GEORGETTE WITH EMBROIDERY
DUPATTA. BUTTERFLY NET
INNER. SANTOON
BOTTOM. SANTOON



D.NO.:1035 G