

ALSFATM



S-3018 B



CARE INSTRUCTIONS
DRY CLEAN RECOMMENDED
DO NOT USE ANY TYPE OF BLEACH OR
STAIN REMOVING CHEMICALS
WASH & SOAK COLORED & WHITE FABRICS SEPARATELY
DO NOT OVER EXPOSE DAMP FABRIC TO STRONG SUNLIGHT
IRON AT MODERATE TEMPERATURE

ALSFATM



S-3018 A



CARE INSTRUCTIONS
DRY CLEAN RECOMMENDED
DO NOT USE ANY TYPE OF BLEACH OR
STAIN REMOVING CHEMICALS
WASH & SOAK COLORED & WHITE FABRICS SEPARATELY
DO NOT OVER EXPOSE DAMP FABRIC TO STRONG SUNLIGHT
IRON AT MODERATE TEMPERATURE



ALSAFATM

Bottom

Daman

Dupatta



ALSFATM



S-3018 B



CARE INSTRUCTIONS
DRY CLEAN RECOMMENDED
DO NOT USE ANY TYPE OF BLEACH OR
STAIN REMOVING CHEMICALS
WASH & SOAK COLORED & WHITE FABRICS SEPARATELY
DO NOT OVER EXPOSE DAMP FABRIC TO STRONG SUNLIGHT
IRON AT MODERATE TEMPERATURE



Dupatta

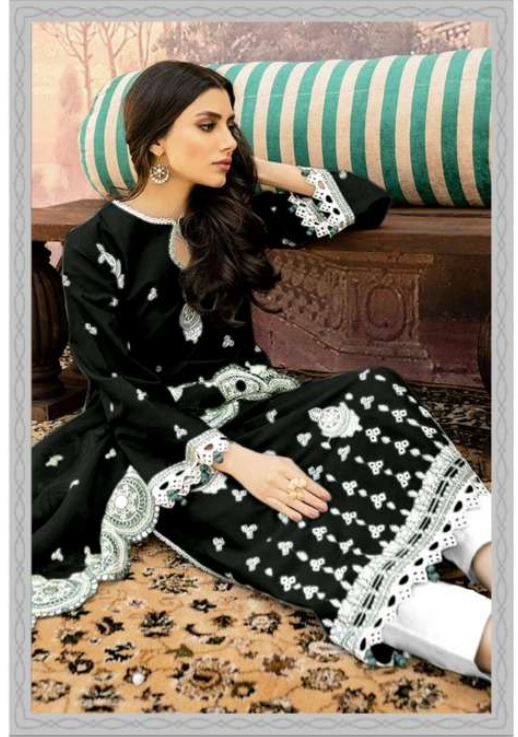
Bottom

Daman

ALSFATM



S-3018 C



CARE INSTRUCTIONS
DRY CLEAN RECOMMENDED
DO NOT USE ANY TYPE OF BLEACH OR
STAIN REMOVING CHEMICALS
WASH & SOAK COLORED & WHITE FABRICS SEPARATELY
DO NOT OVER EXPOSE DAMP FABRIC TO STRONG SUNLIGHT
IRON AT MODERATE TEMPERATURE



ALSIIFATM

Dupatta

Bottom

Daman



S-3018 A



S-3018 B



S-3018 C