

M-153A

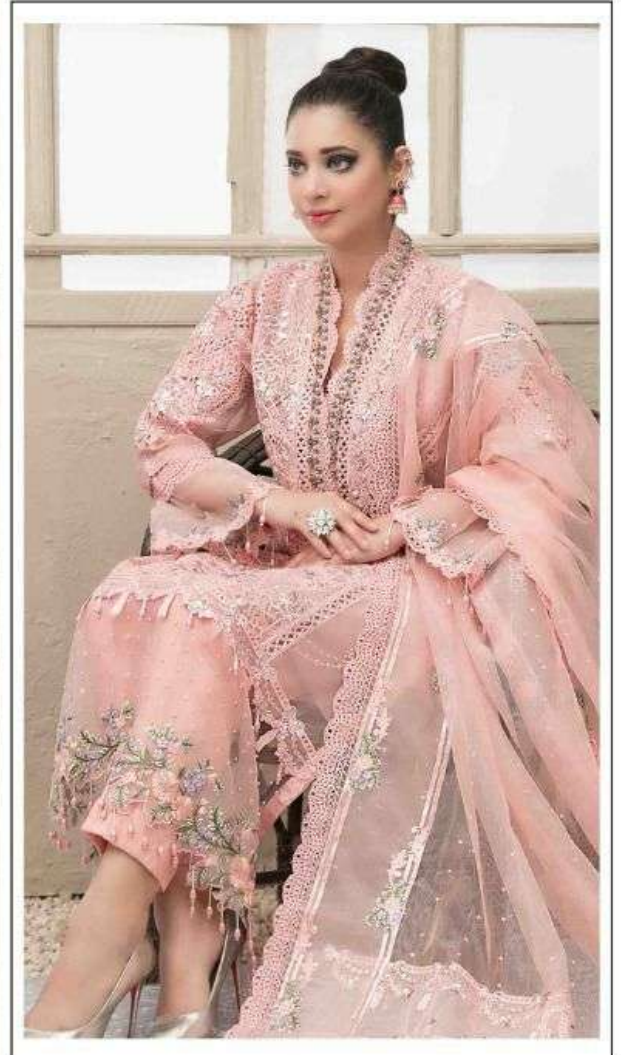
TOP- Heavy Butterfly Net With Heavy Embroidery With Dimond & Moti

BOTTOM- Santoon

DUPATTA- Heavy Net With Embroidery With Moti With Heavy Gpo Less



☞ DRY CLEAN ONLY.
☞ DO NOT USE ANY BLEACH OR STAIN REMOVING CHEMICAL.
☞ IRON THE FABRIC AT MODERATE TEMPERATURE.



M-153A

TOP- Heavy Butterfly Net With Heavy Embroidery With Dimond & Moti

BOTTOM- Santoon

DUPATTA- Heavy Net With Embroidery With Moti With Heavy Gpo Less



☞ DRY CLEAN ONLY.
☞ DO NOT USE ANY BLEACH OR STAIN REMOVING CHEMICAL.
☞ IRON THE FABRIC AT MODERATE TEMPERATURE.



M-153A

TOP: Heavy Butterfly Net With Heavy Embroidery With Diamond & Shell

BOTTOM: Satin

DUPATTA: Heavy Net With Embroidery With Mesh With Heavy Giza Lace

© 2015 MUMUKSHU
All rights reserved. No part of this publication may be reproduced, stored in a retrieval system, or transmitted, in any form or by any means, electronic, mechanical, photocopying, recording, or by any information storage and retrieval system, without the prior written permission of the publisher.