

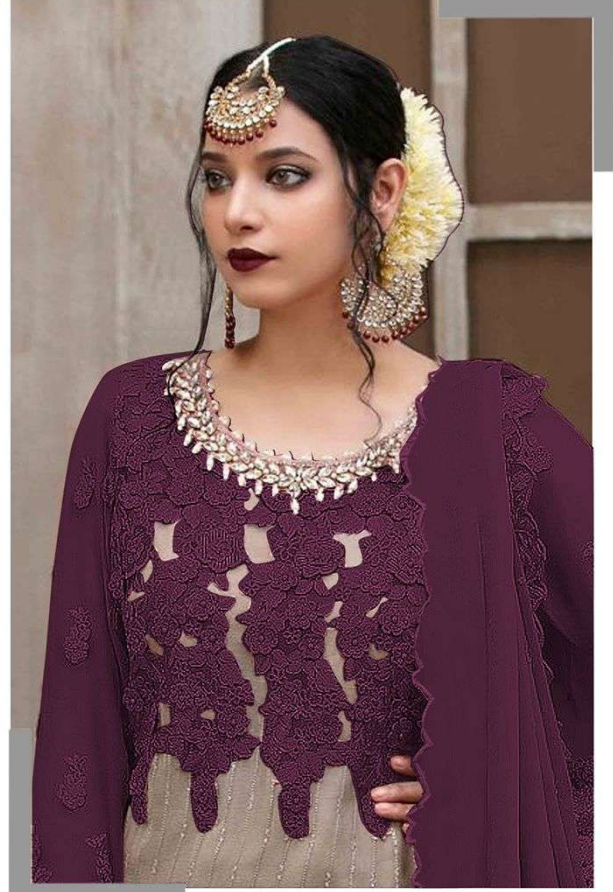
## *Rose* **BRIDAL**

**S-98 F**

### **WASHING INSTRUCTIONS**

DO NOT USE ANY TYPE OF BLEACH OR STAIN REMOVING CHEMICALS  
BEFORE CUTTING / STITCHING, FABRIC SHOULD BE SOAKED IN WATER  
( ALL COMPONENTS SEPARATELY ) FOR 15 MINUTES  
DO NOT KEEP WET FABRIC IN TWISTED FORM IN ORDER TO AVOID COPY MARKS |  
WASH COLOURED AND WHITE FABRICS SEPARATELY  
IRON CLOTHES AT MODERATE TEMPERATURE | DO NOT DRY FABRIC IN DIRECT SUNLIGHT  
( EXTRA LACES, HANGINGS AND ACCESSORIES ARE NOT INCLUDED )





## *Rose* **BRIDAL**

**S-98 B**

### **WASHING INSTRUCTIONS**

DO NOT USE ANY TYPE OF BLEACH OR STAIN REMOVING CHEMICALS  
BEFORE CUTTING / STITCHING , FABRIC SHOULD BE SOAKED BE SOAKED IN WATER  
( ALL COMPONENTS SEPARATELY ) FOR 15 MINUTES  
DO NOT KEEP WET FABRIC IN TWISTED FROM IN ORDER TO AVOID COPY MARKS I  
WASH COLOURED AND WHITE FABRICS SEPARATELY  
IRON CLOTHES AT MODERATE TEMPERATURE I DO NOT DRY FABRIC IN DIRECT SUNLIGHT  
( EXTRA LACES, HANGINGS AND ACCESSORIES ARE NOT INDUDED )



**NACK**

**SLEEVE**

**DUPPTA DAMAN BELT**

**DUPPTA DAMAN LACE**

**DUPPTA NAZMEEN WORK**

**TOP**

**SHANAYA**

**5th**

**Rose BRIDAL**

**WASHING INSTRUCTIONS**

**6-98 B**

**NACK**

**SLEEVE**

**DUPPTA DAMAN BELT**

**DUPPTA DAMAN LACE**

**DUPPTA NAZMEEN WORK**

**TOP**

**SHANAYA**

**Rose BRIDAL**

**WASHING INSTRUCTIONS**

**5-98 B**

**NACK**

**SLEEVE**

**DUPPTA DAMAN BELT**

**DUPPTA DAMAN LACE**

**DUPPTA NAZMEEN WORK**

**TOP**

**SHANAYA**

**Rose BRIDAL**

**WASHING INSTRUCTIONS**

**5-98 B**

NACK

SLEEVE

DUPPTA DAMAN BELT

DUPPTA DAMAN LACE

DUPPTA NAZMEEN WORK

SHANAYA

Rose  
BRIDAL

WASHING INSTRUCTIONS

SHANAYA

TOP

**NACK**

**SLEEVE**

**DUPPTA DAMAN BELT**

**DUPPTA DAMAN LACE**

**DUPPTA NAZMEEN WORK**

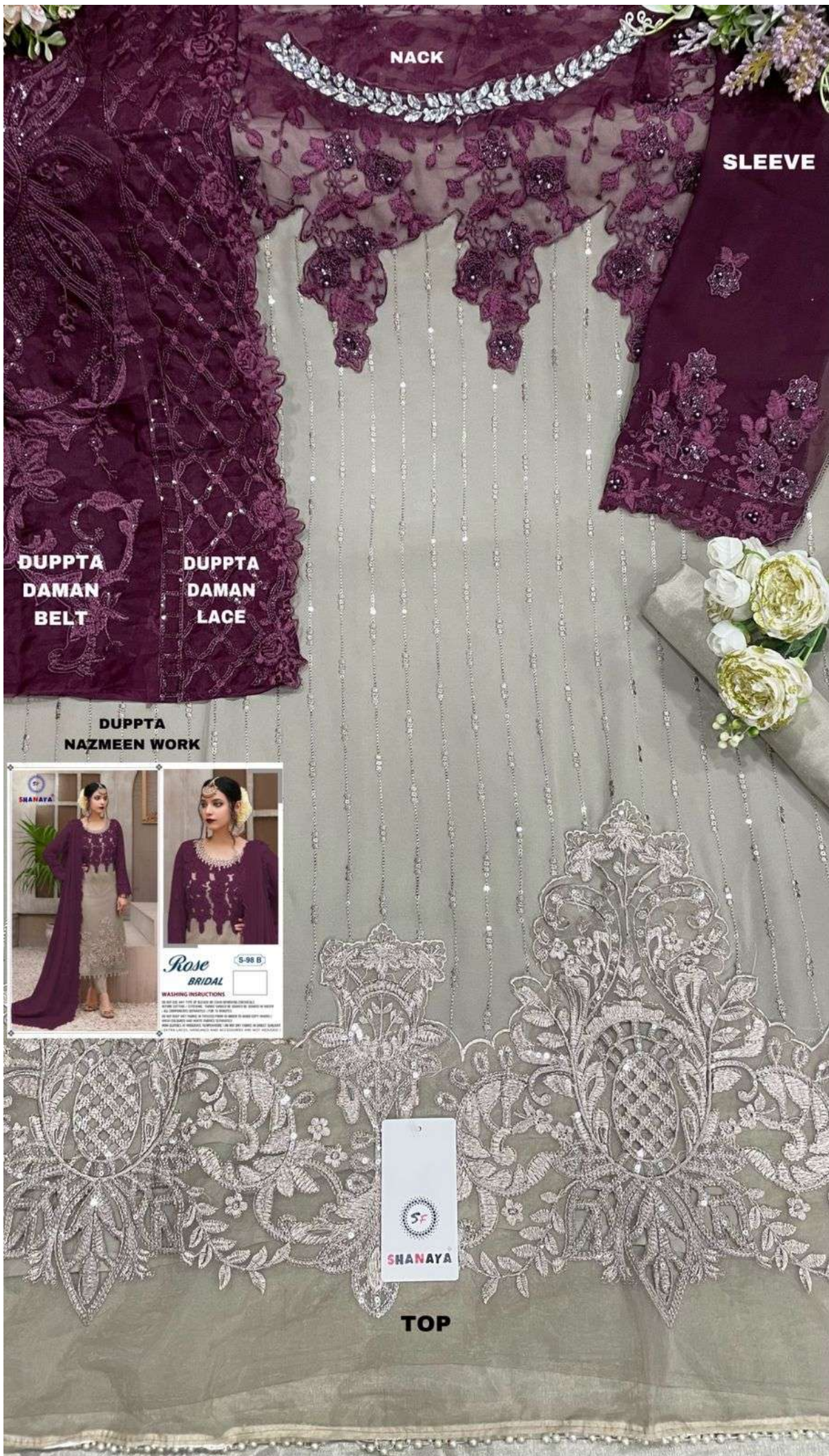
**TOP**

**SHANAYA**

**Rose BRIDAL**

**WASHING INSTRUCTIONS**

**5-98 B**

[illegible][illegible][illegible][illegible]

**NACK**

**SLEEVE**

**DUPPTA DAMAN BELT**

**DUPPTA DAMAN LACE**

**DUPPTA NAZMEEN WORK**

**TOP**

**SHANAYA**

**Rose BRIDAL**

**WASHING INSTRUCTIONS**

**5-98 B**

**NACK**

**SLEEVE**

**DUPPTA DAMAN BELT**

**DUPPTA DAMAN LACE**

**DUPPTA NAZMEEN WORK**

**TOP**

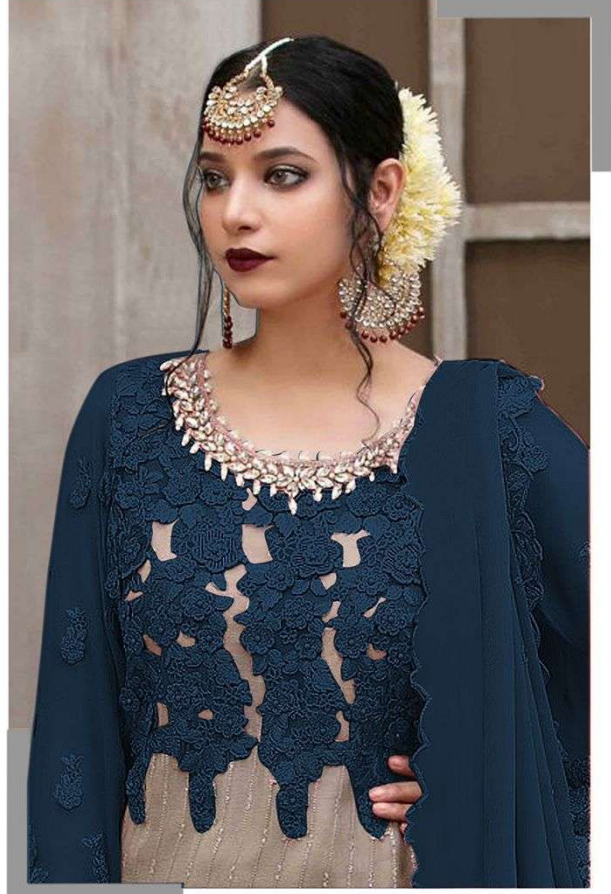
**SHANAYA**

**Rose BRIDAL**

**WASHING INSTRUCTIONS**

**5-98 B**





## *Rose* **BRIDAL**

**S-98 F**

### **WASHING INSTRUCTIONS**

DO NOT USE ANY TYPE OF BLEACH OR STAIN REMOVING CHEMICALS  
BEFORE CUTTING / STITCHING , FABRIC SHOULD BE SOAKED IN WATER  
( ALL COMPONENTS SEPARATELY ) FOR 15 MINUTES  
DO NOT KEEP WET FABRIC IN TWISTED FORM IN ORDER TO AVOID COPY MARKS I  
WASH COLOURED AND WHITE FABRICS SEPARATELY  
IRON CLOTHES AT MODERATE TEMPERATURE I DO NOT DRY FABRIC IN DIRECT SUNLIGHT  
( EXTRA LACES, HANGINGS AND ACCESSORIES ARE NOT INCLUDED )



**NACK**

**SLEEVE**

**DUPPTA DAMAN BELT**

**DUPPTA DAMAN LACE**

**DUPPTA NAZMEEN WORK**

**SHANAYA**

**Rose BRIDAL**

**WASHING INSTRUCTIONS**

**TOP**

NACK

SLEEVE

DUPPTA DAMAN BELT

DUPPTA DAMAN LACE

DUPPTA NAZMEEN WORK

SHANAYA

Rose BRIDAL

S-98 F

WASHING INSTRUCTIONS

TOP

**NACK**

**SLEEVE**

**DUPPTA DAMAN BELT**

**DUPPTA DAMAN LACE**

**DUPPTA NAZMEEN WORK**

**SHANAYA**

**Rose BRIDAL**

**S-98 F**

**WASHING INSTRUCTIONS**

**TOP**

**NACK**

**SLEEVE**

**DUPPTA DAMAN BELT**

**DUPPTA DAMAN LACE**

**DUPPTA NAZMEEN WORK**

**SHANAYA**

**Rose BRIDAL**

**WASHING INSTRUCTIONS**

**TOP**

**NACK**

**SLEEVE**

**DUPPTA DAMAN BELT**

**DUPPTA DAMAN LACE**

**DUPPTA NAZMEEN WORK**

**TOP**

**SHANAYA**

**Rose BRIDAL**

**S-98 F**

**WASHING INSTRUCTIONS**

DRY CLEAN ONLY (DO NOT WASH IN WATER OR DRYER)  
DO NOT IRON (DO NOT USE STEAM)  
DO NOT TUMBLE DRY (DO NOT USE HEAT)  
DO NOT BLEACH (DO NOT USE CHLORINE)  
DO NOT USE DETERGENT (DO NOT USE SOAP)  
DO NOT USE FABRIC SOFTENER (DO NOT USE VINEGAR)  
DO NOT USE HANGING (DO NOT USE HANGING)







**SHANAYA**

**S-98 F**

## Rose BRIDAL

**WASHING INSTRUCTIONS**

DO NOT USE HOT OR COLD WATER TO WASH OR DRY. HAND WASH ONLY.  
 WASH GENTLY. DO NOT BLEACH. DO NOT IRON. DO NOT DRY CLEAN.  
 DO NOT USE HOT OR COLD WATER TO WASH OR DRY. HAND WASH ONLY.  
 WASH GENTLY. DO NOT BLEACH. DO NOT IRON. DO NOT DRY CLEAN.  
 DO NOT USE HOT OR COLD WATER TO WASH OR DRY. HAND WASH ONLY.  
 WASH GENTLY. DO NOT BLEACH. DO NOT IRON. DO NOT DRY CLEAN.



**SHANAYA**



## Rose BRIDAL

**S-98 F**

**WASHING INSTRUCTIONS**

DO NOT USE HOT OR COLD WATER TO WASH OR DRY. HANDWASH ONLY.  
 WASH GENTLY. DO NOT RUB. DO NOT TWIST OR SQUEEZE. DO NOT BLEACH.  
 DO NOT IRON. DO NOT DRY IN DIRECT SUNLIGHT. DO NOT DRY IN FRONT OF FIRE.  
 DO NOT USE HOT OR COLD WATER TO WASH OR DRY. HANDWASH ONLY.  
 WASH GENTLY. DO NOT RUB. DO NOT TWIST OR SQUEEZE. DO NOT BLEACH.  
 DO NOT IRON. DO NOT DRY IN DIRECT SUNLIGHT. DO NOT DRY IN FRONT OF FIRE.





**SHANAYA**

**S-98 F**

## Rose BRIDAL

**WASHING INSTRUCTIONS**

DO NOT USE HOT OR COLD WATER TO WASH OR DRY. HAND WASH ONLY.  
 WASH GENTLY. DO NOT BLEACH. DO NOT IRON. DO NOT DRY CLEAN.  
 DO NOT USE HOT OR COLD WATER TO WASH OR DRY. HAND WASH ONLY.  
 WASH GENTLY. DO NOT BLEACH. DO NOT IRON. DO NOT DRY CLEAN.  
 DO NOT USE HOT OR COLD WATER TO WASH OR DRY. HAND WASH ONLY.  
 WASH GENTLY. DO NOT BLEACH. DO NOT IRON. DO NOT DRY CLEAN.

**NACK**

**SLEEVE**

**DUPPTA DAMAN BELT**

**DUPPTA DAMAN LACE**

**DUPPTA NAZMEEN WORK**

**SHANAYA**

**Rose BRIDAL**

**WASHING INSTRUCTIONS**

**SHANAYA**

**TOP**

**NACK**

**SLEEVE**

**DUPPTA DAMAN BELT**

**DUPPTA DAMAN LACE**

**DUPPTA NAZMEEN WORK**

**SHANAYA**

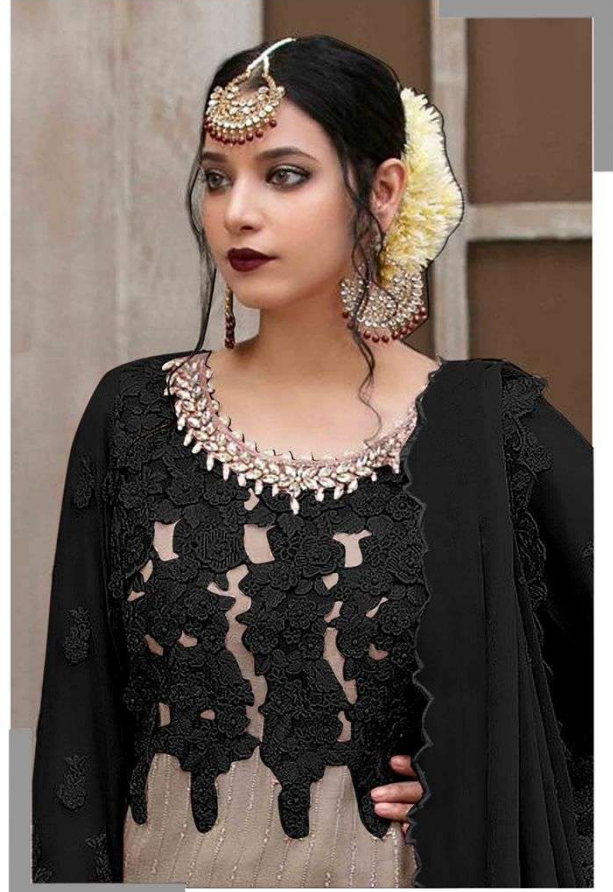
**Rose BRIDAL**

**S-98 F**

**WASHING INSTRUCTIONS**

**TOP**





## *Rose* **BRIDAL**

**S-98 B**

### **WASHING INSTRUCTIONS**

DO NOT USE ANY TYPE OF BLEACH OR STAIN REMOVING CHEMICALS  
BEFORE CUTTING / STITCHING , FABRIC SHOULD BE SOAKED IN WATER  
( ALL COMPONENTS SEPARATELY ) FOR 15 MINUTES  
DO NOT KEEP WET FABRIC IN TWISTED FORM IN ORDER TO AVOID COPY MARKS I  
WASH COLOURED AND WHITE FABRICS SEPARATELY  
IRON CLOTHES AT MODERATE TEMPERATURE I DO NOT DRY FABRIC IN DIRECT SUNLIGHT  
( EXTRA LACES, HANGINGS AND ACCESSORIES ARE NOT INCLUDED )



## SLEEVE

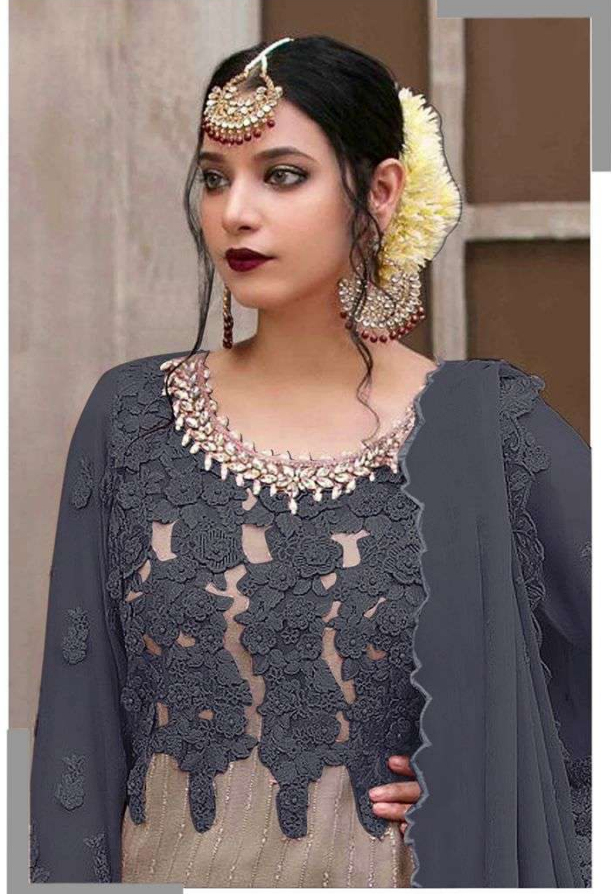
**DUPPTA  
DAMAN  
LACE**

**DUPPTA**  
**NAZMEEN WORK**



**TOP**





## *Rose* **BRIDAL**

**S-98 H**

### **WASHING INSTRUCTIONS**

DO NOT USE ANY TYPE OF BLEACH OR STAIN REMOVING CHEMICALS  
BEFORE CUTTING / STITCHING, FABRIC SHOULD BE SOAKED IN WATER  
( ALL COMPONENTS SEPARATELY ) FOR 15 MINUTES  
DO NOT KEEP WET FABRIC IN TWISTED FORM IN ORDER TO AVOID COPY MARKS |  
WASH COLOURED AND WHITE FABRICS SEPARATELY  
IRON CLOTHES AT MODERATE TEMPERATURE | DO NOT DRY FABRIC IN DIRECT SUNLIGHT  
( EXTRA LACES, HANGINGS AND ACCESSORIES ARE NOT INCLUDED )





NACK

SLEEVE

DUPPTA  
DAMAN  
BELT

DUPPTA  
DAMAN  
LACE

DUPPTA  
NAZMEEN WORK



TOP





S-98 E



S-98 F



S-98 G



S-98 H



*Rose Bridal*  
S-98 EDITION-2