

Levisha®

ਸੁਰੀਂਧ

خوشبو

KHUSHBOO



Stunning DESIGN # 10001



Polus
WE WANT TO PLAY
10003
Levita



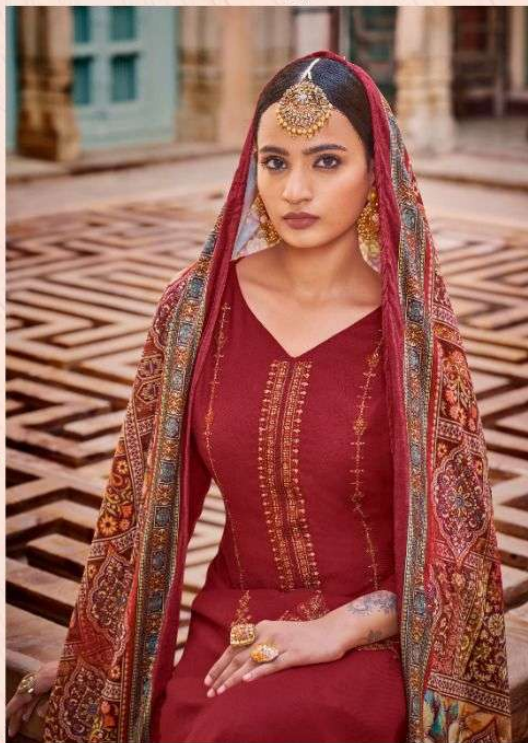
The image shows a woman in a mustard yellow kurta and matching trousers, paired with a large, intricately patterned shawl in shades of orange, red, and yellow. She is standing in a traditional Indian architectural setting with stone pillars and arches. A small inset image in the bottom left corner provides a close-up view of the hem of the kurta and the woman's feet, which are wearing brown leather flat shoes.





Embroidered THE JOURNEY # 10004

Levisha®





Celebrate IN STYLE # 10005





10001

10002

10003



10004

10005

10006