



Kilruba
TRANSFORMING FASHION



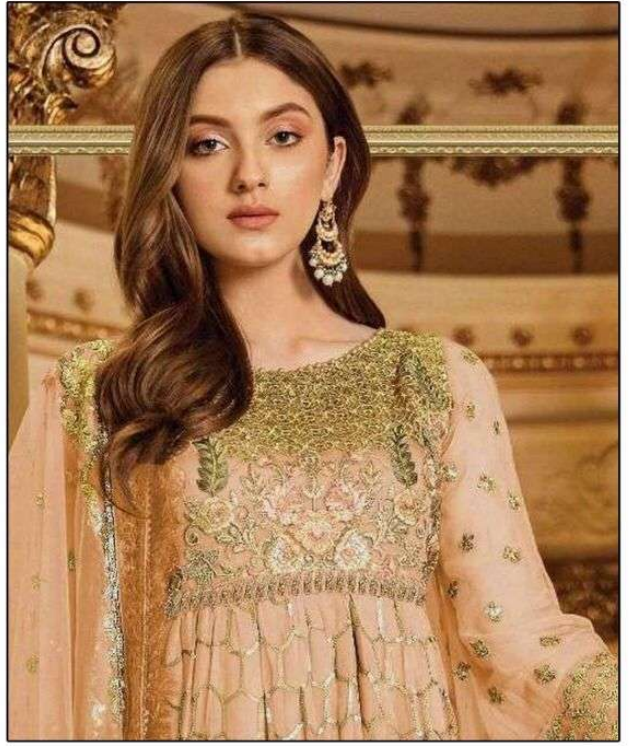
D-NO-K-216-A

**TOP-HEAVY GEORGETTE
WITH EMBROIDERY
BOTTOM/INER-SANTOON
DUPATTA- HEAVY NAZMEEN
CHIFFON WITH EMBROIDERY**

WASHING INSTRUCTIONS
DO NOT USE ANY TYPE OF BLEACH OR STAIN REMOVING CHEMICALS
BEFORE CUTTING STEAMING FABRIC SHOULD BE SOAKED IN WATER
(ALL COMPONENTS SEPARATELY) FOR 15 MINUTES
DO NOT KEEP WET FABRIC IN TWISTED FORM IN ORDER TO AVOID COPIBARSKI
WASH COLOURED AND WHITE FABRICS SEPARATELY
IRON CLOTHES AT MEDIUM TEMPERATURE DO NOT DRY FABRIC IN DIRECT SUNLIGHT
(EXTRA LACES/HANGINGS AND ACCESSORIES ARE NOT INCLUDED)



Kilruba
TRANSFORMING FASHION



D-NO-K-216

**TOP-HEAVY GEORGETTE
WITH EMBROIDERY
BOTTOM/INER-SANTOON
DUPATTA- HEAVY NAZMEEN
CHIFFON WITH EMBROIDERY**

WASHING INSTRUCTIONS

DO NOT USE ANY TYPE OF BLEACH OR STAIN REMOVING CHEMICALS
BEFORE CUTTING STEAMING FABRIC SHOULD BE SOAKED IN WATER
(ALL COMPONENTS SEPARATELY) FOR 15 MINUTES
DO NOT KEEP WET FABRIC IN TWISTED FORM IN ORDER TO AVOID COPIBARSKI
WASH COLOURED AND WHITE FABRICS SEPARATELY
IRON CLOTHES AT MEDIUM TEMPERATURE DO NOT DRY FABRIC IN DIRECT SUNLIGHT
(EXTRA LACES/HANGINGS AND ACCESSORIES ARE NOT INCLUDED)



Kilruba
TRANSFORMING FASHION



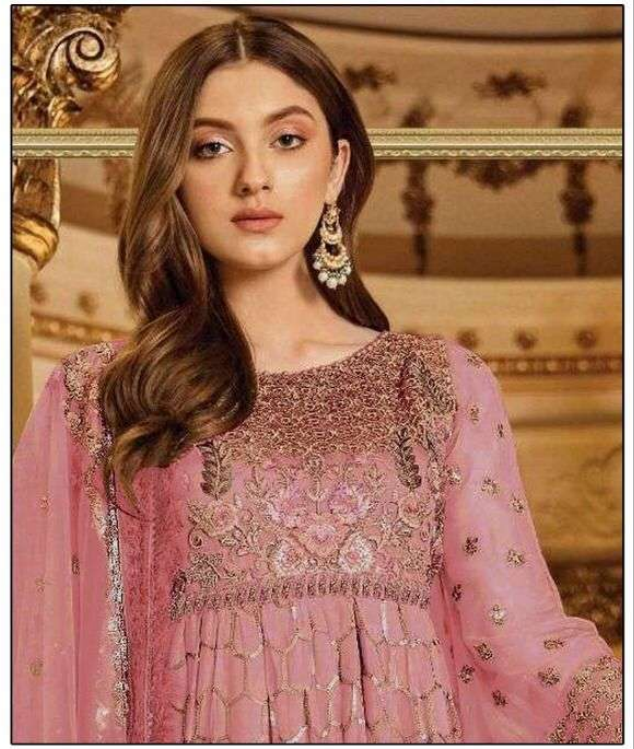
D-NO-K-216-A

**TOP-HEAVY GEORGETTE
WITH EMBROIDERY
BOTTOM/INER-SANTOON
DUPATTA- HEAVY NAZMEEN
CHIFFON WITH EMBROIDERY**

WASHING INSTRUCTIONS
DO NOT USE ANY TYPE OF BLEACH OR STAIN REMOVING CHEMICALS
BEFORE CUTTING STEAMING FABRIC SHOULD BE SOAKED IN WATER
(ALL COMPONENTS SEPARATELY) FOR 15 MINUTES
DO NOT KEEP WET FABRIC IN TWISTED FORM IN ORDER TO AVOID COPIBARSKI
WASH COLOURED AND WHITE FABRICS SEPARATELY
IRON CLOTHES AT MEDIUM TEMPERATURE DO NOT DRY FABRIC IN DIRECT SUNLIGHT
(EXTRA LACES/HANGINGS AND ACCESSORIES ARE NOT INCLUDED)



Kilruba
TRANSFORMING FASHION



D-NO-K-216-B

**TOP-HEAVY GEORGETTE
WITH EMBROIDERY
BOTTOM/INER-SANTOON
DUPATTA- HEAVY NAZMEEN
CHIFFON WITH EMBROIDERY**

WASHING INSTRUCTIONS

DO NOT USE ANY TYPE OF BLEACH OR STAIN REMOVING CHEMICALS
BEFORE CUTTING STEAMING FABRIC SHOULD BE SOAKED IN WATER
(ALL COMPONENTS SEPARATELY) FOR 15 MINUTES
DO NOT KEEP WET FABRIC IN TWISTED FORM IN ORDER TO AVOID COPI HANGS
WASH COLOURED AND WHITE FABRICS SEPARATELY
IRON CLOTHES AT MEDIUM TEMPERATURE DO NOT DRY FABRIC IN DIRECT SUNLIGHT
(EXTRA LACES/HANGINGS AND ACCESSORIES ARE NOT INCLUDED)