

RINAZ<sup>®</sup>  
FASHION



RINAZ<sup>®</sup>  
FASHION

D.NO.53003

TOP - FOX GEORGETTE WITH EMBROIDERY

BOTTOM+INNER - HEAVY SHANTUN

DUPATTA - NAZNIN WITH EMBROIDERY WORK

*Ramsha* VOL. 21



**WASHING INSTRUCTIONS**

DO NOT USE ANY TYPE OF BLEACH OR STAIN REMOVING CHEMICALS  
BEFORE CUTTING / STITCHING. FABRIC SHOULD BE SOAKED IN WATER  
(ALL COMPONENTS SEPARATELY ) FOR 15 MINUTES  
DO NOT KEEP WET FABRIC IN TWISTED FORM IN ORDER TO AVOID COPY MARKS !  
WASH COLOURED AND WHITE FABRICS SEPARATELY  
IRON CLOTHES AT MODERATE TEMPERATURE ! DO NOT DRY FABRIC IN DIRECT SUNLIGHT  
( EXTRA LACES , HANGING AND ACCESSORIES ARE NOT INCLUDED)





RINAZ  
D.NO. 53003

**RINAZ**  
D.NO. 53003

TOP - FULL GEOMETRIC WITH EMBROIDERY  
BOTTOM - SHIRT - HEAVY BEAUTIFUL  
EXCLUSIVELY - HAND-MADE WITH EMBROIDERY WORK.

**Ramsha**

100% COTTON  
100% HAND-MADE  
100% EMBROIDERY  
100% GEOMETRIC  
100% FULL GEOMETRIC  
100% HEAVY BEAUTIFUL  
100% EXCLUSIVELY  
100% HAND-MADE  
100% WITH EMBROIDERY WORK



**RINAZ**<sup>®</sup>  
FASHION

D.NO.53001

TOP - FOX GEORGETTE WITH EMBROIDERY

BOTTOM+INNER - HEAVY SHANTUN

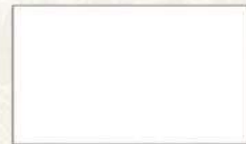
DUPATTA - NAZNIN WITH EMBROIDERY WORK

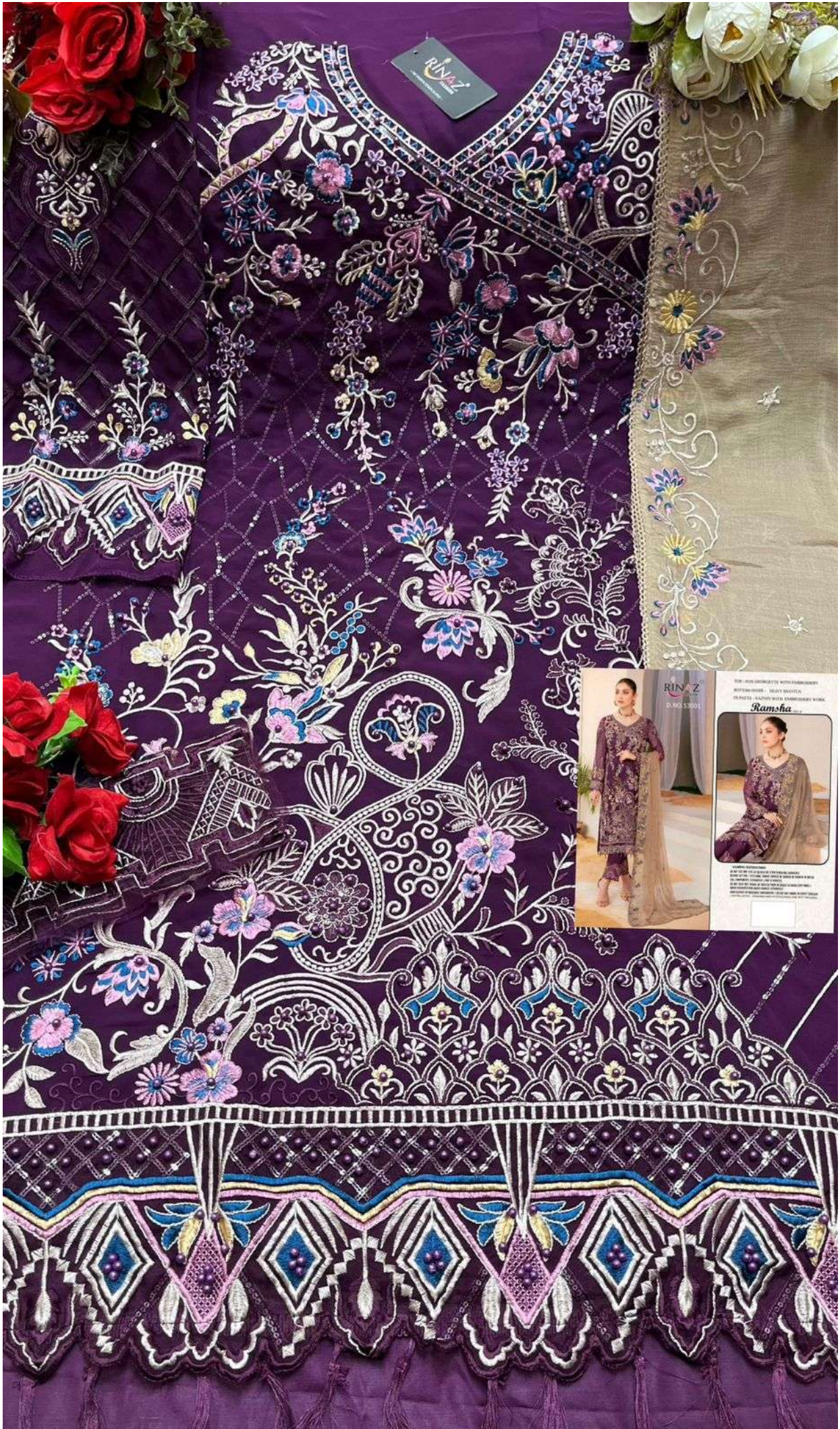
## Ramsha vol. 21



### WASHING INSTRUCTIONS

DO NOT USE ANY TYPE OF BLEACH OR STAIN REMOVING CHEMICALS  
BEFORE CUTTING / STITCHING. FABRIC SHOULD BE SOAKED IN WATER  
(ALL COMPONENTS SEPARATELY ) FOR 15 MINUTES  
DO NOT KEEP WET FABRIC IN TWISTED FORM IN ORDER TO AVOID COPY MKRS !  
WASH COLOURED AND WHITE FABRICS SEPARATELY  
IRON CLOTHES AT MODERATE TEMPERATURE ! DO NOT DRY FABRIC IN DIRECT SUNLIGHT  
( EXTRA LACES , HANGING AND ACCESSORIES ARE NOT INDUDED)





RINAZ



NEW - 100% COTTON WITH EMBROIDERY  
INTERFACING - READY MADE  
PERFECT - NAZAM WITH EMBROIDERY WORK

**Ramsha**

100% COTTON WITH EMBROIDERY  
INTERFACING - READY MADE  
PERFECT - NAZAM WITH EMBROIDERY WORK

100% COTTON WITH EMBROIDERY  
INTERFACING - READY MADE  
PERFECT - NAZAM WITH EMBROIDERY WORK

RINAZ<sup>®</sup>  
FASHION

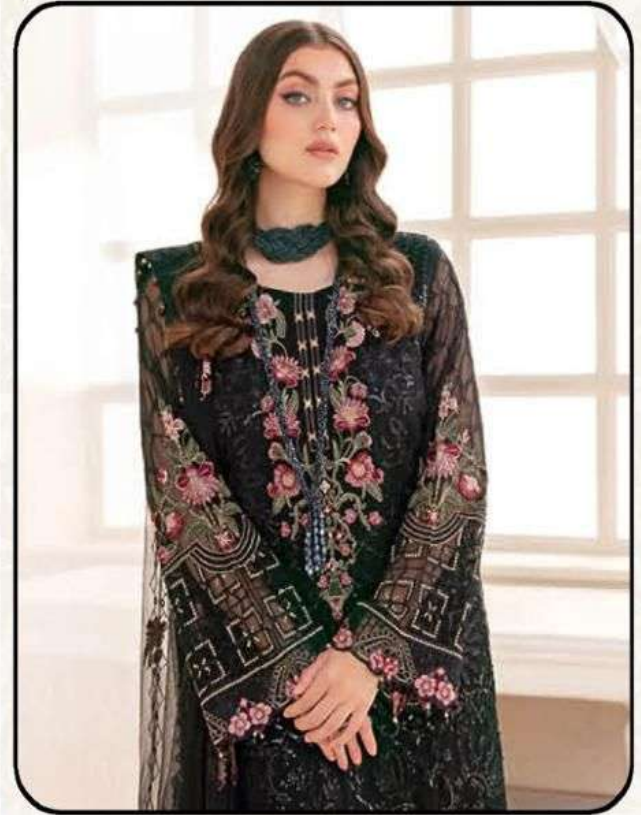
D.NO.53002

TOP - FOX GEORGETTE WITH EMBROIDERY

BOTTOM+INNER - HEAVY SHANTUN

DUPATTA - NET WITH EMBROIDERY WORK

*Ramsha* VOL. 21

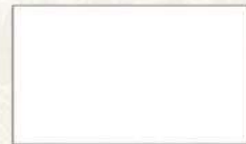


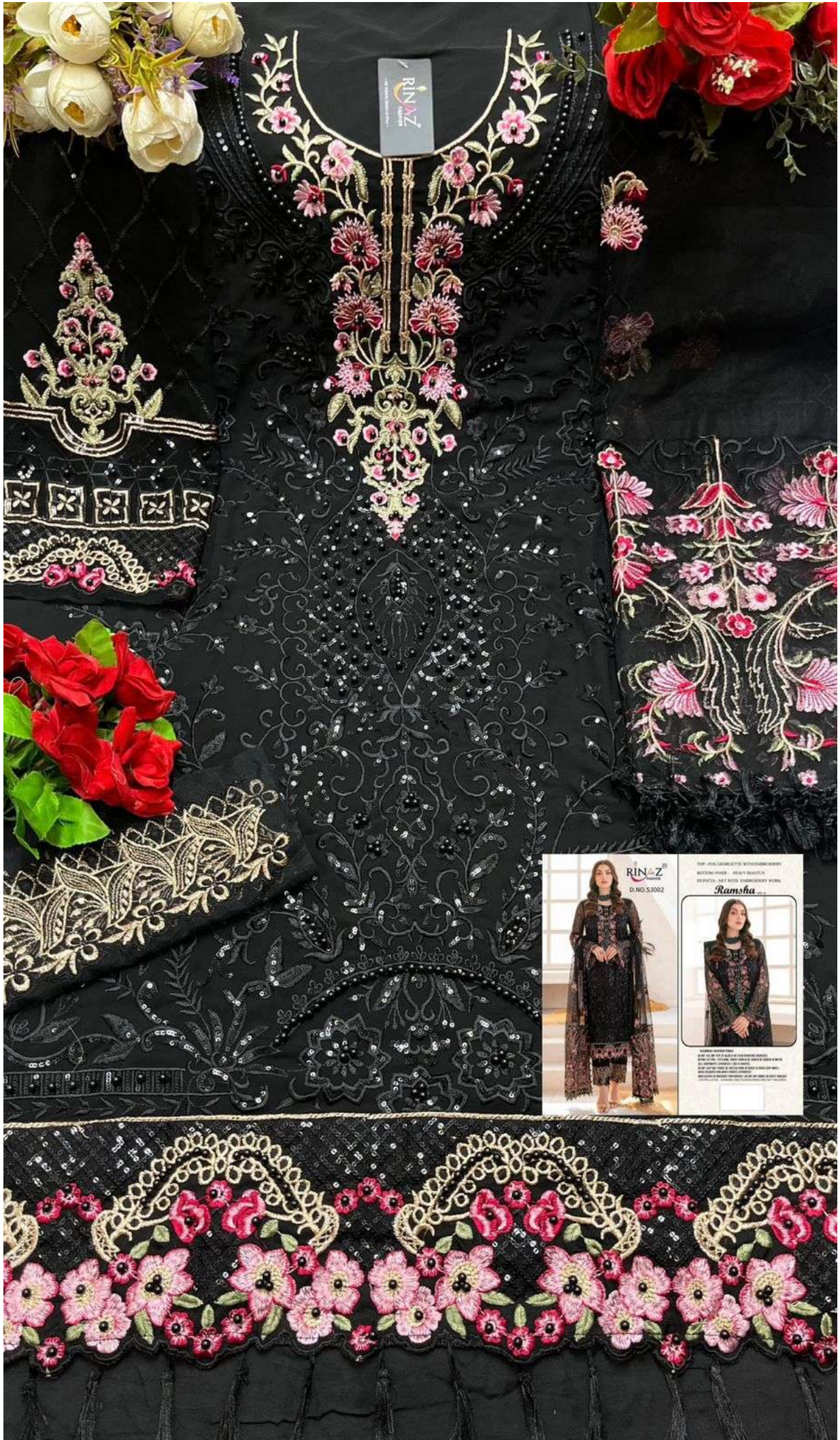
**WASHING INSTRUCTIONS**

DO NOT USE ANY TYPE OF BLEACH OR STAIN REMOVING CHEMICALS  
BEFORE CUTTING / STITCHING. FABRIC SHOULD BE SOAKED IN WATER  
(ALL COMPONENTS SEPARATELY ) FOR 15 MINUTES

DO NOT KEEP WET FABRIC IN TWISTED FORM IN ORDER TO AVOID COPY MARKS !  
WASH COLOURED AND WHITE FABRICS SEPARATELY

IRON CLOTHES AT MODERATE TEMPERATURE ! DO NOT DRY FABRIC IN DIRECT SUNLIGHT  
( EXTRA LACES , HANGING AND ACCESSORIES ARE NOT INCLUDED)





**RINAZ**  
DESIGNER  
D.NO. S/3002

TOP - FULL GARMENTE WITH EMBROIDERY  
MATERIALS - HEAVY QUALITY  
DESIGNER - NET WITH EMBROIDERY WORK

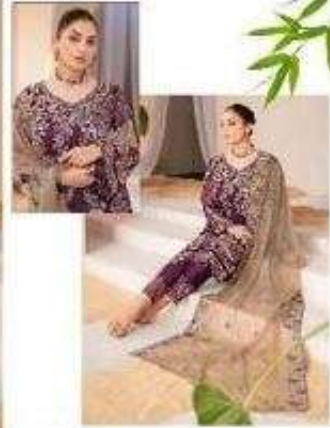
**Ramsha**

SIZE: 36-38  
MATERIAL: NET WITH EMBROIDERY WORK  
DESIGNER: NET WITH EMBROIDERY WORK



RINAZ<sup>®</sup>  
FASHION  
D.NO.53001

RINAZ<sup>®</sup>  
FASHION  
D.NO.53002



RINAZ<sup>®</sup>  
FASHION  
D.NO.53003





# Ramsha

*VOL- 21*

D.No.	TOP	BOTTOM + INNER	DUPATTA
53001	FOX GEORGETTE WITH EMBROIDERY	HEAVY SHANTUN	NAZNIN WITH EMBROIDERY WORK
53002	FOX GEORGETTE WITH EMBROIDERY	HEAVY SHANTUN	NETT WITH EMBROIDERY WORK
53003	FOX GEORGETTE WITH EMBROIDERY	HEAVY SHANTUN	NAZNIN WITH EMBROIDERY WORK

\*NOTE : Rate 1399/- + GST Extra.