

A woman is the central figure, seated on a black chair with a patterned seat. She is wearing a yellow and pink silk ensemble, including a crop top, a long skirt, and a shawl. Her hair is styled in a bun with a gold headpiece, and she wears large red earrings and a black belt with gold studs. She holds a small orange woven bag. The background features a wall with arched niches containing bottles, and a hanging lantern. The overall aesthetic is a blend of traditional Indian fashion and modern bar culture.

RAJBEER™
THE LABEL

OPULENCE • DESIGNATE • INVENTION

KAIZA A SILK

ZARI BASE CHAAP HANDLOOM WEAVING SILK



RAJBEER™
THE LABEL

OPULENCE • DESIGNATE • INVENTION

KAIZAA SILK

ZARI BASE CHAAP HANDLOOM WEAVING SILK

4001



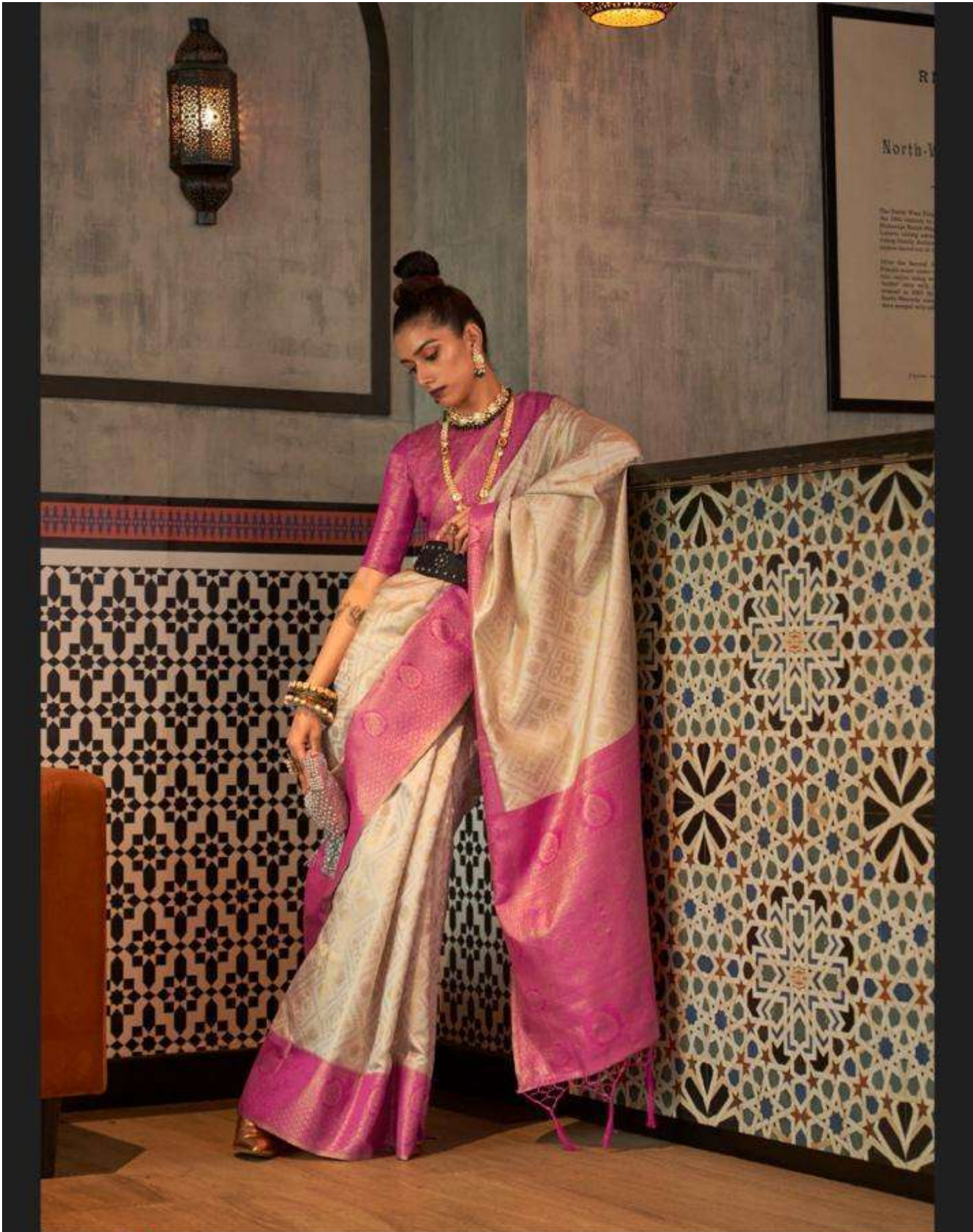
RAJBEER™
THE LABEL

OPULENCE • DESIGNATE • INVENTION

KAIZAA SILK

ZARI BASE CHAAP HANDLOOM WEAVING SILK

4002



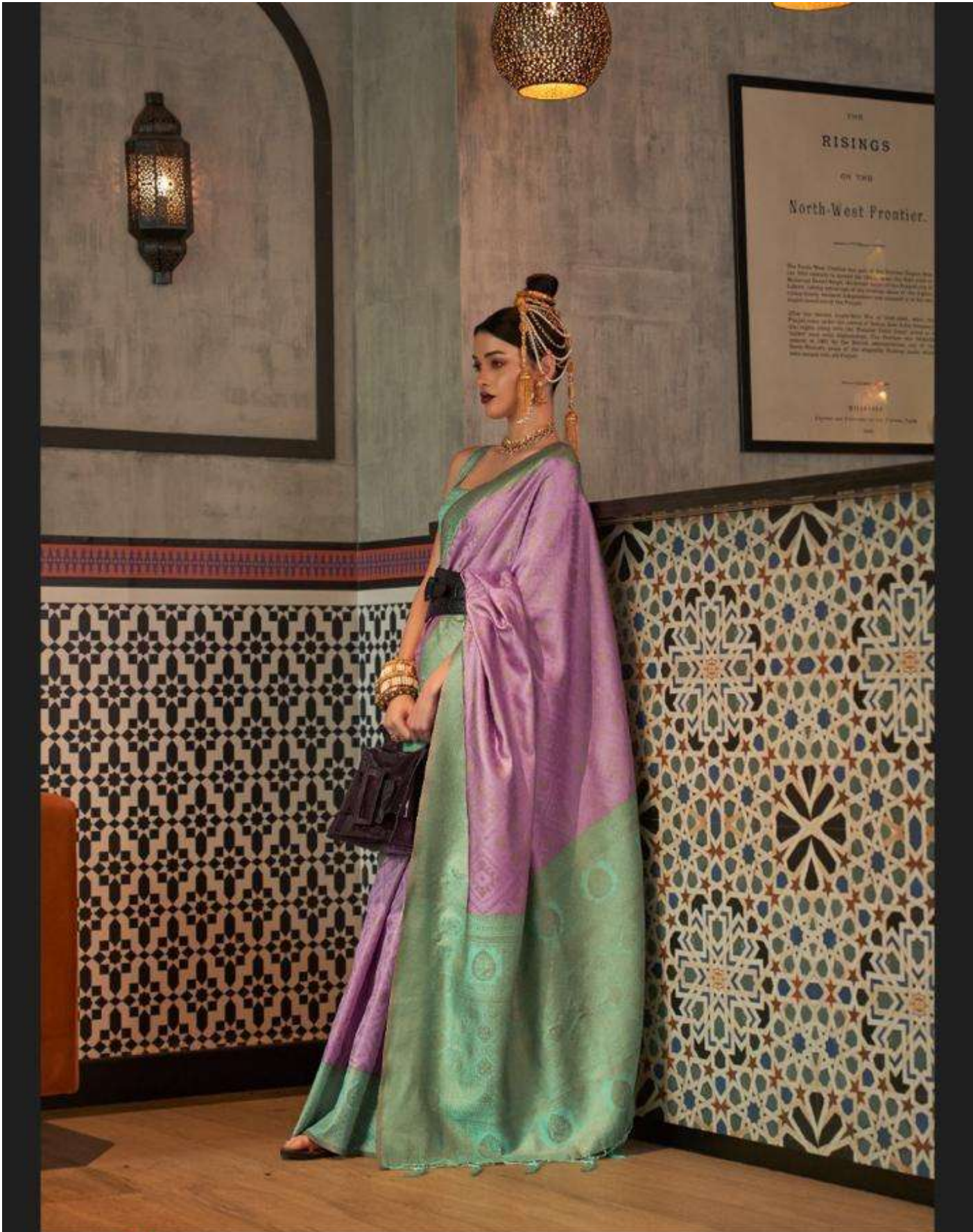
RAJBEER™
THE LABEL

OPULENCE • DESIGNATE • INVENTION

KAIZAA SILK

ZARI BASE CHAAP HANDLOOM WEAVING SILK

4003



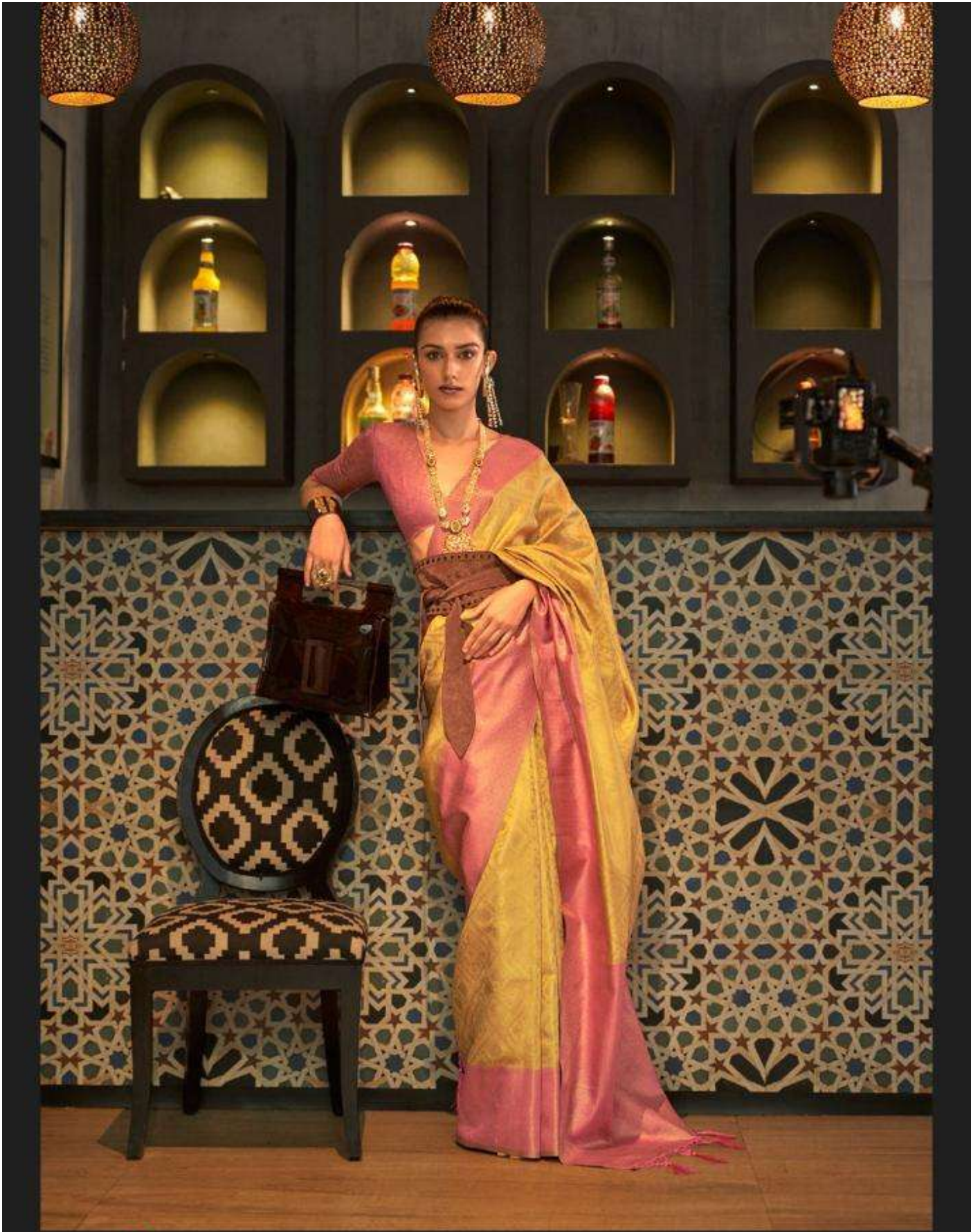
RAJBEER™
THE LABEL

OPULENCE • DESIGNATE • INVENTION

KAIZAA SILK

ZARI BASE CHAAP HANDLOOM WEAVING SILK

4004



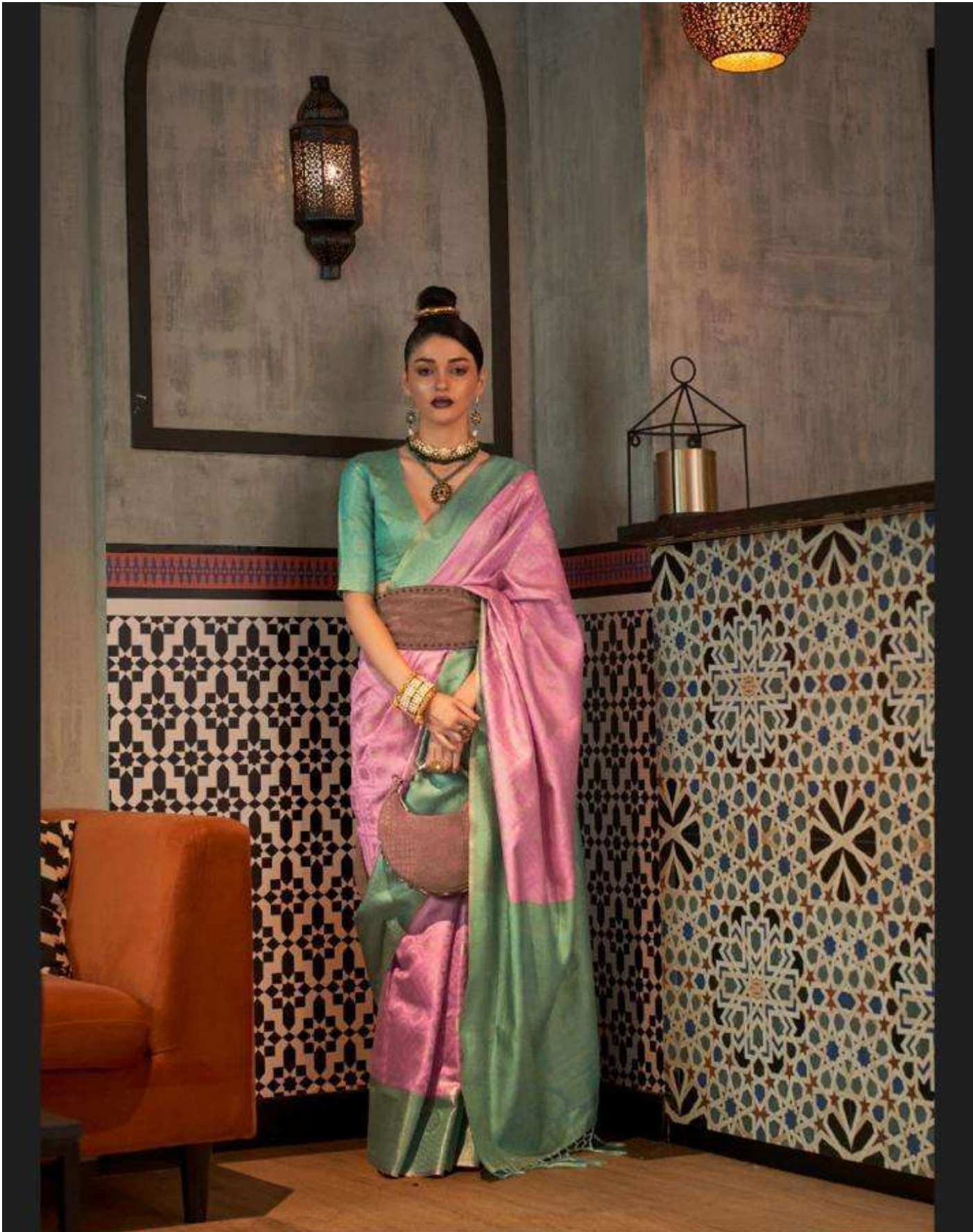
RAJBEER™
THE LABEL

OPULENCE • DESIGNATE • INVENTION

KAIZAA SILK

ZARI BASE CHAAP HANDLOOM WEAVING SILK

4005



RAJBEER™
THE LABEL

OPULENCE • DESIGNATE • INVENTION

KAIZAA SILK

ZARI BASE CHAAP HANDLOOM WEAVING SILK

4006

RAJBEER™
THE LABEL

OPULENCE • DESIGNATE • INVENTION

KAIZAA SILK

ZARI BASE CHAAP HANDLOOM WEAVING SILK



4001



4002



4003



4004



4005



4006