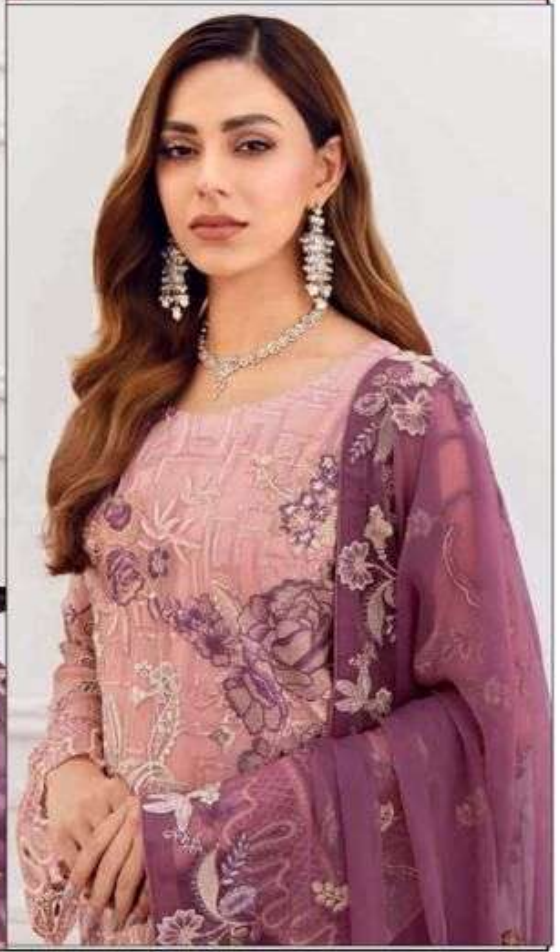




ARMANI
Rimsha 23

Fabric Details

- Top : Georgett with embroidery**
- Dupatta : Nazmeen with embroidery**
- Bottom : Santoon with embroidery patches**
- Inner : Santoon**





ARMANI
Rimsha 23

Fabric Details

- Top : Georgett with embroidery**
- Dupatta : Nazmeen with embroidery**
- Bottom : Santoon with embroidery patches**
- Inner : Santoon**





ARHANT
Rimsha 23
Fabric Details

Top : Georgett with embroidery
Dupatta : Netmeen with embroidery
Bottom : Satinoni with embroidery patches
Inner : Satinoni