

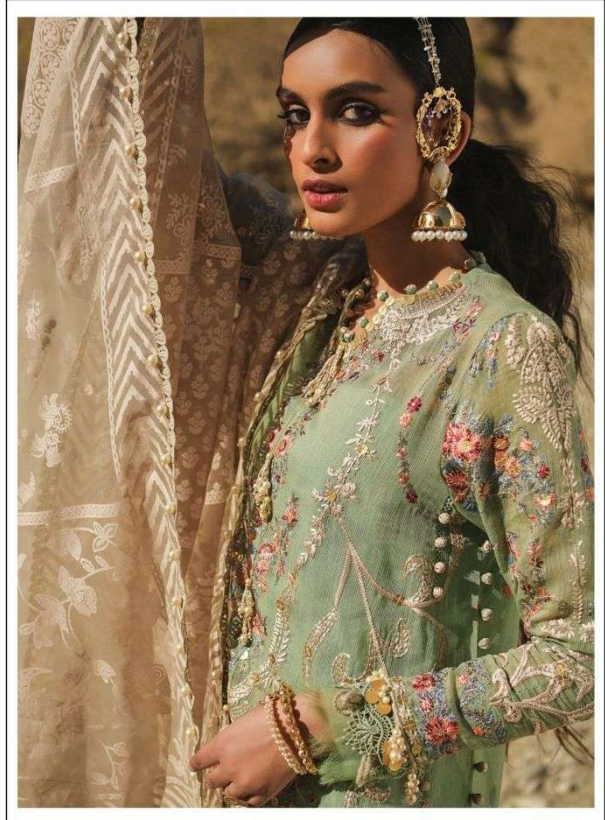
TOP- DULL ORGANZA WITH HEAVY EMBROIDERY

M-243 B

BOTTOM/INNER- SANTOON

DUPATTA/NET- ORGANZA WITH WORK WITH 4 SIDE CUT WORK LACE

- ☉ DRY CLEAN ONLY.
- ✗ DO NOT USE ANY BLEACH OR STAIN REMOVING CHEMICAL.
- ☎ IRON THE FABRIC AT MODERATE TEMPERATURE.



**TOP- HEAVY FOX GEROGETTE EMBROIDERED
WITH DAIMOND WORK**

M-243 A

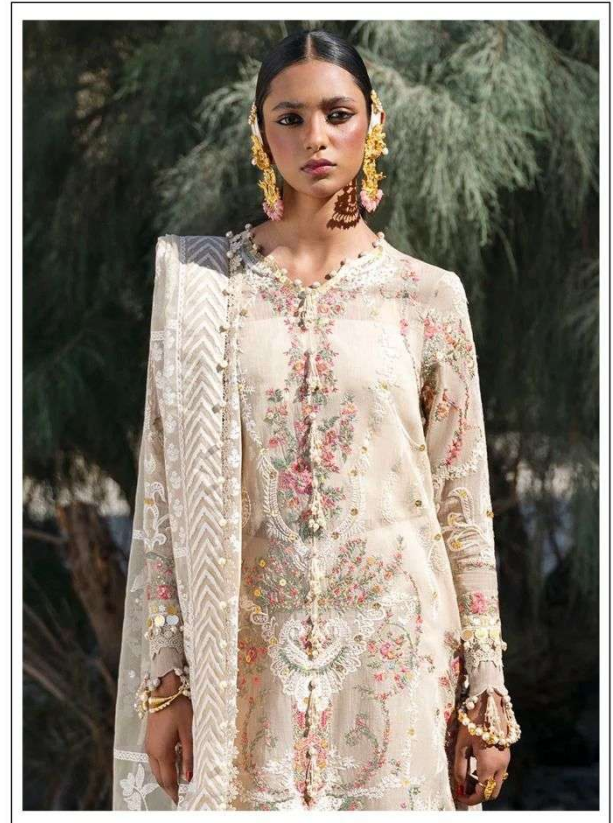
INNER- SANTOON

BOTTOM- SANTOON

DUPATTA/NET- HEAVY EMBROIDERY WORK

-  DRY CLEAN ONLY.
-  DO NOT USE ANY BLEACH OR STAIN REMOVING CHEMICAL.
-  IRON THE FABRIC AT MODERATE TEMPERATURE.





TOP- DULL ORGANZA WITH HEAVY EMBROIDERY

M-243 B

BOTTOM/INNER- SANTOON

DUPATTA/NET- ORGANZA WITH WORK WITH 4 SIDE CUT WORK LACE

- ☉ DRY CLEAN ONLY.
- ✘ DO NOT USE ANY BLEACH OR STAIN REMOVING CHEMICAL.
- ☎ IRON THE FABRIC AT MODERATE TEMPERATURE.





TOP- DULL ORGANZA WITH HEAVY EMBROIDERY

M-243 C

BOTTOM/INNER- SANTOON

DUPATTA/NET- ORGANZA WITH WORK WITH 4 SIDE CUT WORK LACE

- ☉ DRY CLEAN ONLY.
- ✗ DO NOT USE ANY BLEACH OR STAIN REMOVING CHEMICAL.
- ☼ IRON THE FABRIC AT MODERATE TEMPERATURE.



MUSTIQ

TOP - 80 IN 50% COTTON EMBROIDERED
WITH BANGLO WORK

INUS-SANTON

ROTIUS-SANTON

DEPT. VINT. HEAVY EMBROIDERY W/

• WASHABLE ONLY
• DO NOT BLEACH
• DO NOT IRON

M-241C

**TOP- HEAVY FOX GEROGETTE EMBROIDERED
WITH DAIMOND WORK**

INNER- SANTOON

BOTTOM- SANTOON

DUPATTA/NET- HEAVY EMBROIDERY WORK



D.No-243 A



D.No-243 B



D.No-243 C