



MR -122 B



READY MADE
COLLECTION

FEBRIC DETAIL

TOP:- DULL ORGENZA WITH HEAVY EMBROIDERY

BOTTOM/INNER:- SILK VISCOSE

DUPATTA:- ORGENZA WITH WORK WITH 4SIDE CUT WORK LACE

☞ DRY CLEAN ONLY.
☞ DO NOT USE ANY BLEACH OR STAIN REMOVING CHEMICAL.
☞ IRON THE FABRIC AT MODERATE TEMPERATURE.



MR -122 A



READY MADE
COLLECTION

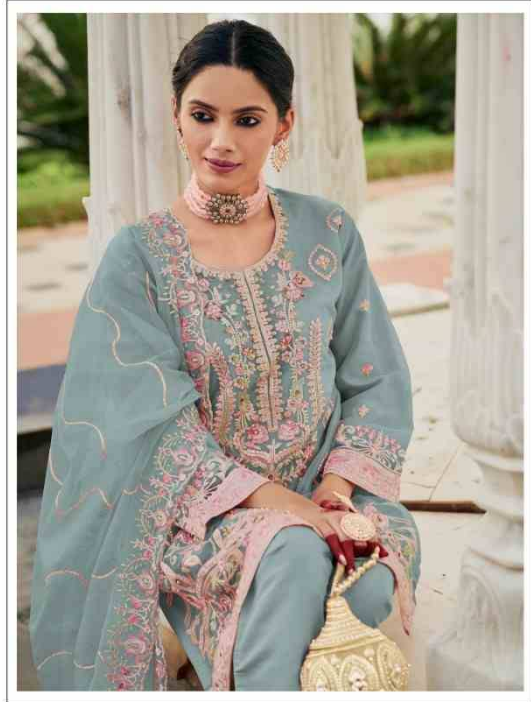
FEBRIC DETAIL

TOP:- DULL ORGENZA WITH HEAVY EMBROIDERY

BOTTOM/INNER:- SILK VISCOSE

DUPATTA:- ORGENZA WITH WORK WITH 4SIDE CUT WORK LACE

☞ DRY CLEAN ONLY.
☞ DO NOT USE ANY BLEACH OR STAIN REMOVING CHEMICAL.
☞ IRON THE FABRIC AT MODERATE TEMPERATURE.



MR -122 B



READY MADE
COLLECTION

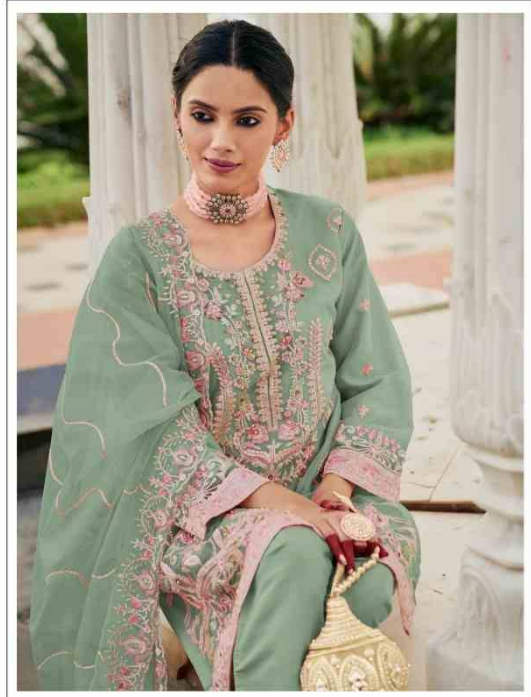
FEBRIC DETAIL

TOP:- DULL ORGENZA WITH HEAVY EMBROIDERY

BOTTOM/INNER:- SILK VISCOSE

DUPATTA:- ORGENZA WITH WORK WITH 4SIDE CUT WORK LACE

☞ DRY CLEAN ONLY.
☞ DO NOT USE ANY BLEACH OR STAIN REMOVING CHEMICAL.
☞ IRON THE FABRIC AT MODERATE TEMPERATURE.



MR -122 C



READY MADE
COLLECTION

FEBRIC DETAIL

TOP:- DULL ORGENZA WITH HEAVY EMBROIDERY

BOTTOM/INNER:- SILK VISCOSE

DUPATTA:- ORGENZA WITH WORK WITH 4SIDE CUT WORK LACE

☞ DRY CLEAN ONLY.
☞ DO NOT USE ANY BLEACH OR STAIN REMOVING CHEMICAL.
☞ IRON THE FABRIC AT MODERATE TEMPERATURE.



MR -122 D



READY MADE
COLLECTION

FEBRIC DETAIL

TOP:- DULL ORGENZA WITH HEAVY EMBROIDERY

BOTTOM/INNER:- SILK VISCOSE

DUPATTA:- ORGENZA WITH WORK WITH 4SIDE CUT WORK LACE

☞ DRY CLEAN ONLY.
☞ DO NOT USE ANY BLEACH OR STAIN REMOVING CHEMICAL.
☞ IRON THE FABRIC AT MODERATE TEMPERATURE.



READY MADE
COLLECTION

FEBRIC DETAIL

TOP:- DULL ORGENZA WITH HEAVY EMBROIDERY

BOTTOM/INNER:- SILK VISCOSE

DUPATTA:- ORGENZA WITH WORK WITH 4SIDE CUT WORK LACE



MR -122 A



MR -122 B



MR -122 C



MR -122 D