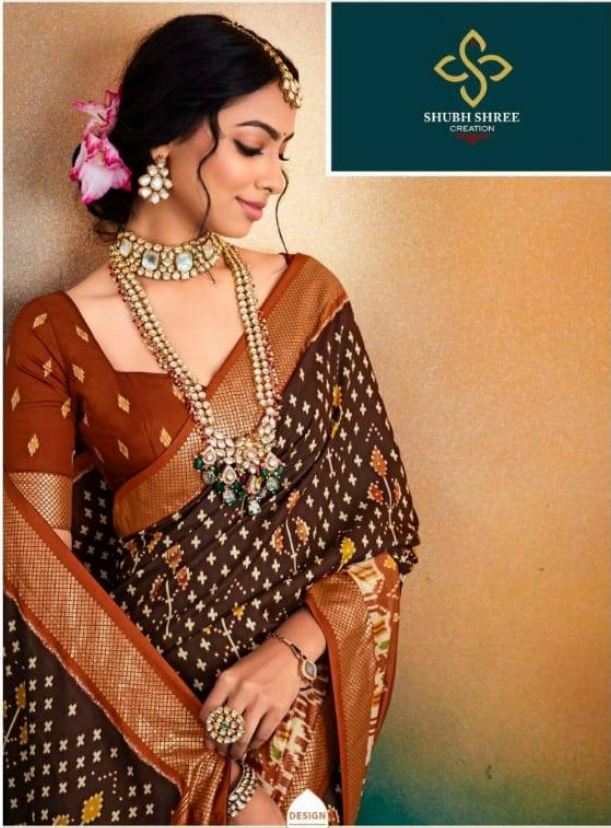


NOTHING FEELS AS PERFECT AS A SAREE



DESIGN
102



THE SAREE IS THE EPITOME OF MY FEMININITY.

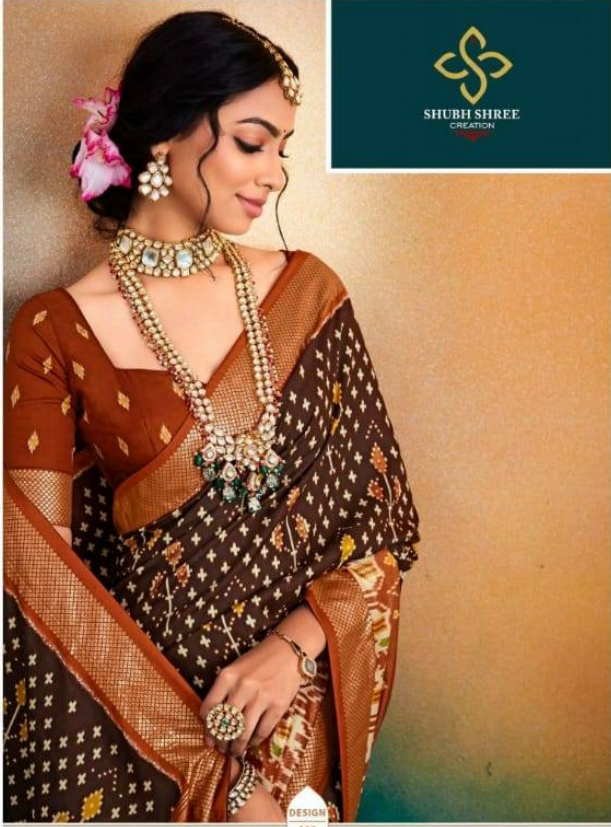


DESIGN
101



SHUBH SHREE
CREATION

NOTHING FEELS AS PERFECT AS A SAREE







SHUBH SHREE
CREATION



DESIGN
104

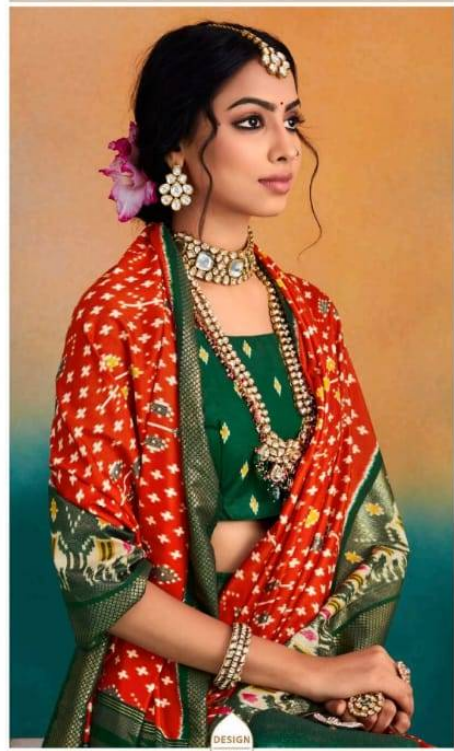


I GOT A GUILFUL YET RESPECTABLE NATURE, ALL COVERED IN MY SAREE.





I GOT HUMILITY AS LONG AS MY PALLU



DESIGN
106

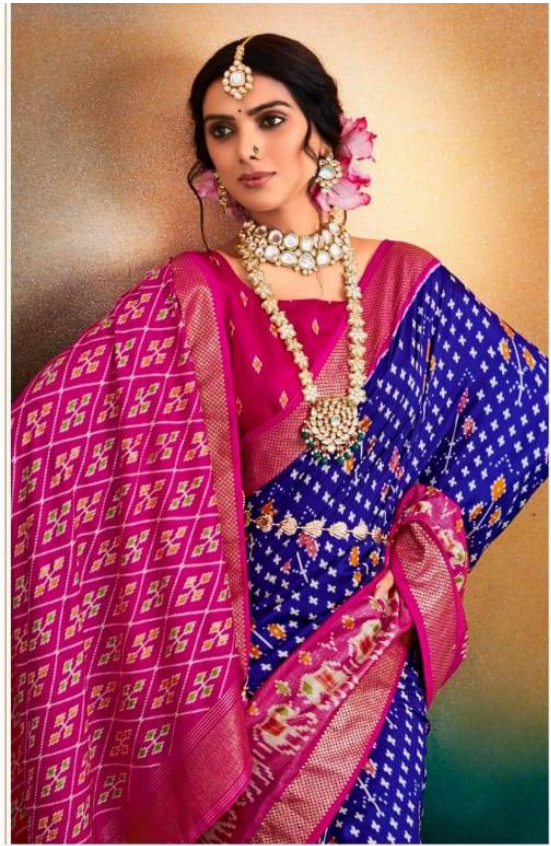


DESIGN
108

AND TODAY, YOU SEE A FURIOUS WOMAN IN A SAREE



SHUBH SHREE
CREATION

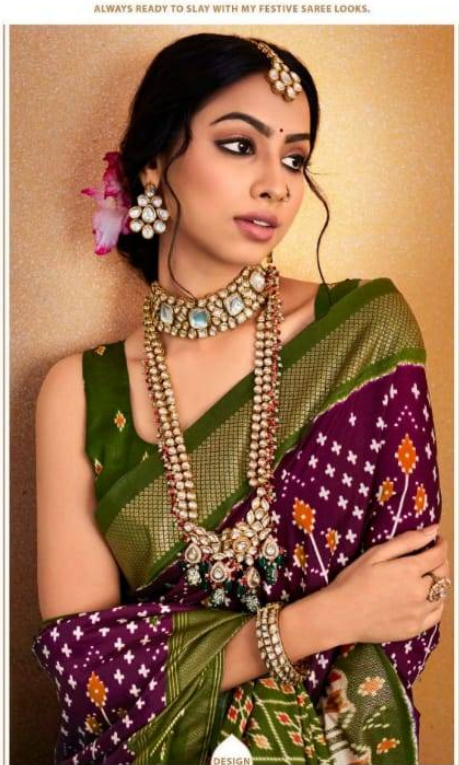


FLAUNTING MY INDIAN AMBIANCE IN A SAREE

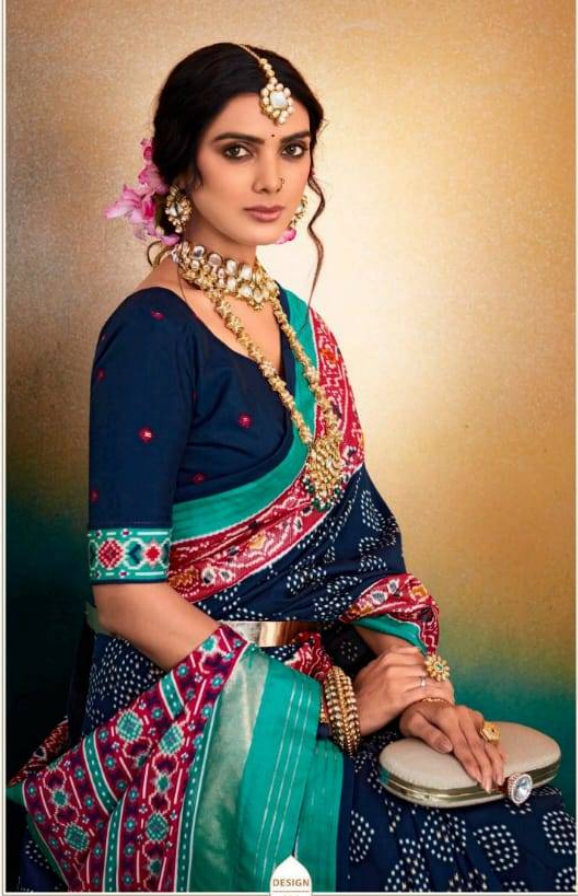
DESIGN
109



SHUBH SHREE
CREATION



DESIGN
101



I GOT A GUILFUL YET RESPECTABLE NATURE, ALL COVERED IN MY SAREE





FLAUNTING MY INDIAN AMBIANCE IN A SAREE



DESIGN
101



DESIGN
101



DESIGN
102



DESIGN
103



DESIGN
104



DESIGN
105



DESIGN
106



DESIGN
107



DESIGN
108



DESIGN
109



DESIGN
110



DESIGN
111



DESIGN
112