



Alzohaib

Shahzeb



Alzohaib

Shahzeb

AZ-1008-A

TOP

Organza with Heavy
Embroidery

BOTTOM-INNER

Heavy Santoon

DUPATTA

Organza with Heavy
Embroidery

CARE INSTRUCTIONS

- ☉ Dry clean only
- ⚠ Do not use any bleach or stain removing chemical
- ☐ Iron the fabric at moderate temperature
- ☒ Do not dry fabric in direct sunlight



Alzohaib



Alzohaib

Shahzeb

AZ-1008-A

TOP

Organza with Heavy Embroidery

BOTTOM-INNER

Heavy Santoon

DUPATTA

Organza with Heavy Embroidery

CARE INSTRUCTIONS

Wash in cold water

Do not use bleach or any other chemical

Do not iron at high temperature

Do not dry clean



Alzohaib



Alzohaib

Shahzeb

AZ-1008-B

TOP

Organza with Heavy
Embroidery

BOTTOM-INNER

Heavy Santoon

DUPATTA

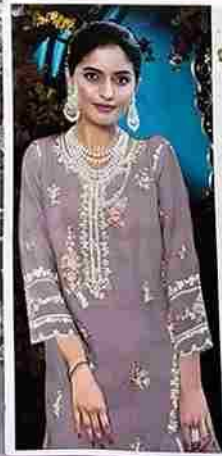
Organza with Heavy
Embroidery

CARE INSTRUCTIONS

- ☉ Dry clean only
- ⚠ Do not use any bleach or stain removing chemical
- ☐ Iron the fabric at moderate temperature
- ☒ Do not dry fabric in direct sunlight



Alzohaib



Alzohaib
Shahzeb
AZ-1008-B
TOP
Organza with Heavy Embroidery
BOTTOM-INNER
Heavy Santoon
DUPATTA
Organza with Heavy Embroidery



CARE INSTRUCTIONS
① Dry Clean Only
② Do not use any bleach or ironing
③ Wash in cold water
④ Do not wring or twist

Alzohaib



Alzohaib

Shahzeb

AZ-1008-C

TOP

Organza with Heavy
Embroidery

BOTTOM-INNER

Heavy Santoon

DUPATTA

Organza with Heavy
Embroidery

CARE INSTRUCTIONS

- ☉ Dry clean only
- ⚠ Do not use any bleach or stain removing chemical
- ☐ Iron the fabric at moderate temperature
- ☒ Do not dry fabric in direct sunlight



Alzohaib



Alzohaib

Shahzeb
AZ-1008-C

TOP
Organza with Heavy Embroidery

BOTTOM-INNER
Heavy Santoon

DUPATTA
Organza with Heavy Embroidery

CARE INSTRUCTIONS:
1. Dry Clean Only
2. Do Not Iron
3. Do Not Wash
4. Do Not Bleach
5. Do Not Tumble Dry

Alzohaib



Alzohaib

Shahzeb

AZ-1008-D

TOP

Organza with Heavy
Embroidery

BOTTOM-INNER

Heavy Santoon

DUPATTA

Organza with Heavy
Embroidery

CARE INSTRUCTIONS

- ☉ Dry clean only
- ⚠ Do not use any bleach or stain removing chemical
- ☐ Iron the fabric at moderate temperature
- ☒ Do not dry fabric in direct sunlight



Alzohaib



Alzohaib

Shahzeb

AZ-1008-D

TOP
Organza with Heavy
Embroidery

BOTTOM-INNER
Heavy Santoon

DUPATTA
Organza with Heavy
Embroidery

CARE INSTRUCTIONS

- 1. Dry Clean Only
- 2. Wash with care and do not use harsh detergents
- 3. Iron on low heat and avoid steam
- 4. Do not wring or twist the fabric



Alzohaib

CARE INSTRUCTIONS

- ☉ Dry-clean only
- ⚠ Do not use any bleach or stain removing chemical
- ☐ Iron the fabric at moderate temperature
- ☒ Do not dry fabric in direct sunlight



Shahzeb

TOP Organza with Heavy Embroidery **BOTTOM-INNER** Heavy Santoon **DUPATTA** Organza with Heavy Embroidery



AZ.1008-A



AZ.1008-B



AZ.1008-C



AZ.1008-D