

D.NO.266 B

Sadaf Fawad
Vol-1



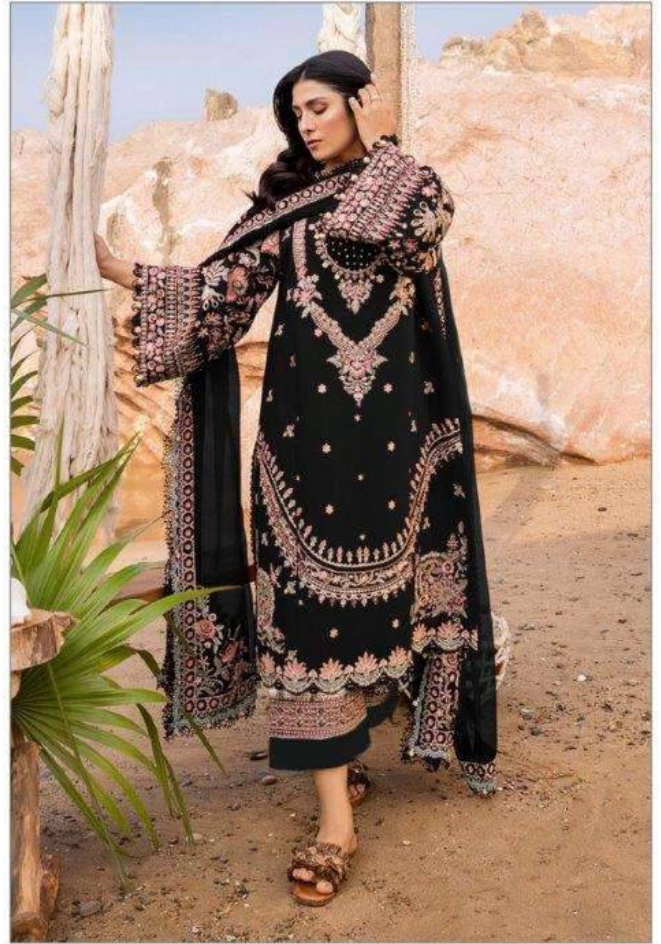
TOP - Rayon With Embroidery Work

DUPATTA- Nazmeen with Embroidery

BOTTOM - Rayon

CARE INSTRUCTIONS

- DRY CLEAN RECOMMENDED
- DO NOT OVEREXPOSE DAMP FABRIC TO STRONG SUNLIGHT
- DO NOT USE ANYTYPE OF BLEACH OR STAIN REMOVING CHEMICALS
- IRON AT MODERATE TEMPERATURE





D.NO.266 A

Sadaf Fawad
Vol-1



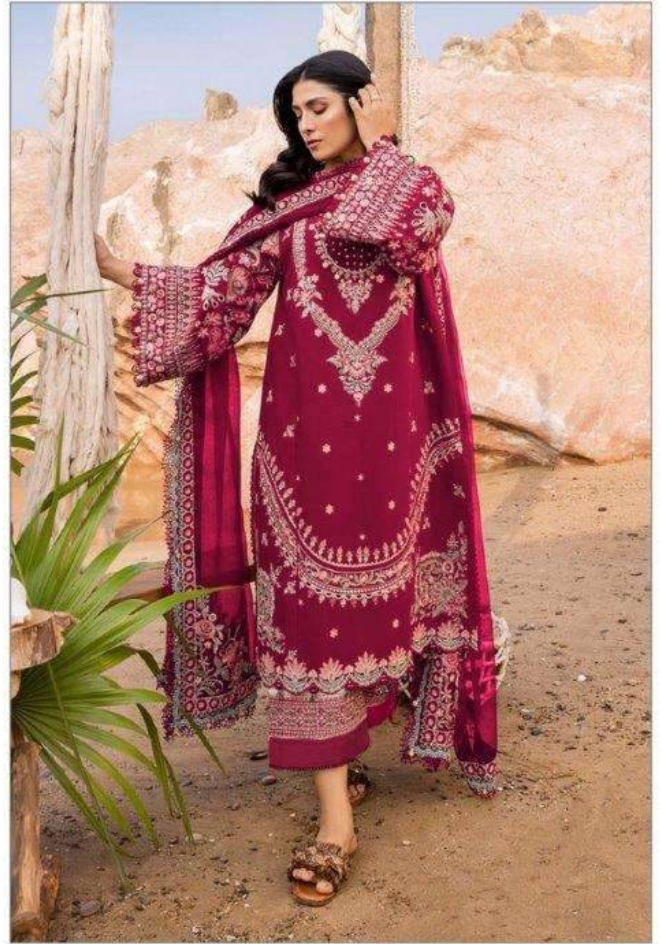
TOP - Rayon With Embroidery Work

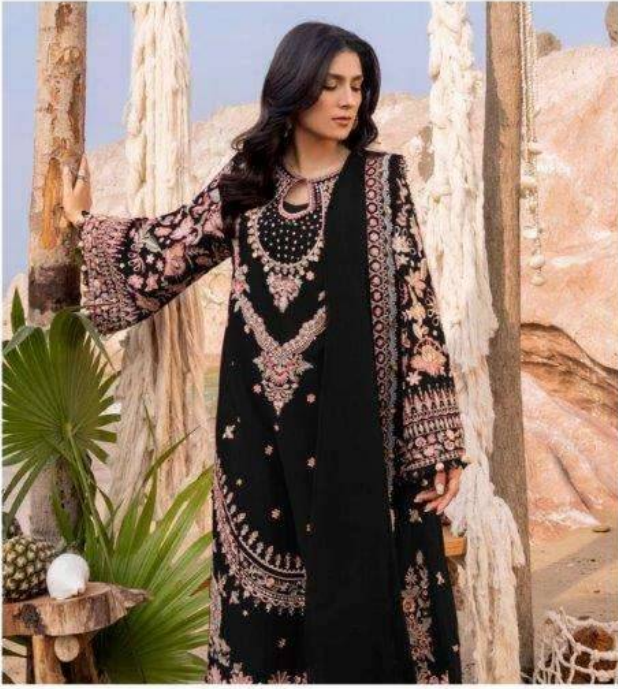
DUPATTA- Nazmeen with Embroidery

BOTTOM - Rayon

CARE INTRUCTIONS

- DRY CLEAN RECOMMENDED
- DO NOT OVEREXPOSE DAMP FABRIC TO STRONG SUNLIGHT
- DO NOT USE ANYTYPE OF BLEACH OR STAIN REMOVING CHEMICALS
- IRON AT MODERATE TEMPERATURE





D.NO.266 B

Sadaf Fawad
Vol-1



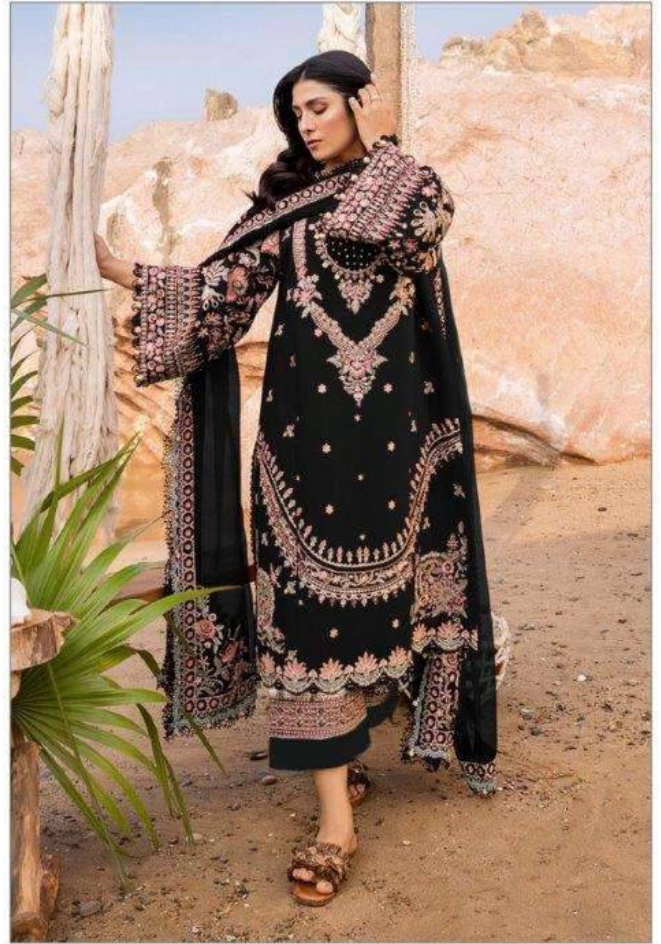
TOP - Rayon With Embroidery Work

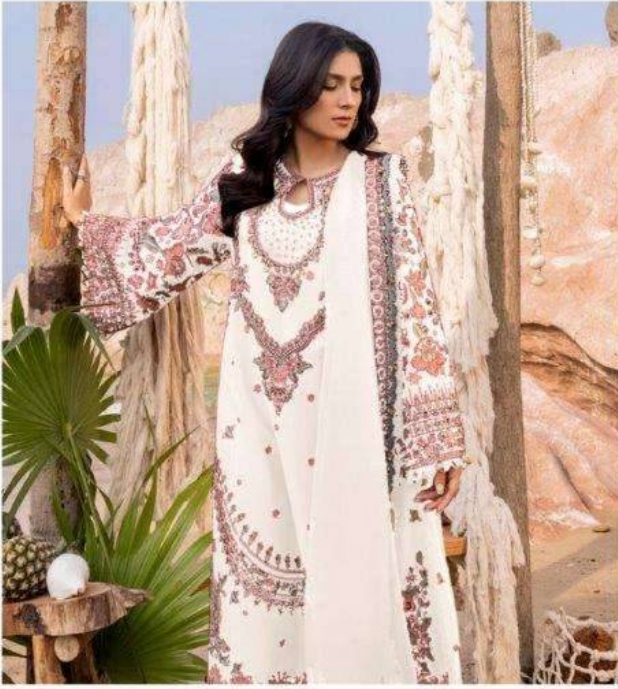
DUPATTA- Nazmeen with Embroidery

BOTTOM - Rayon

CARE INTRUCTIONS

- DRY CLEAN RECOMMENDED
- DO NOT OVEREXPOSE DAMP FABRIC TO STRONG SUNLIGHT
- DO NOT USE ANYTYPE OF BLEACH OR STAIN REMOVING CHEMICALS
- IRON AT MODERATE TEMPERATURE





D.NO.266 C

Sadaf Fawad
Vol-1



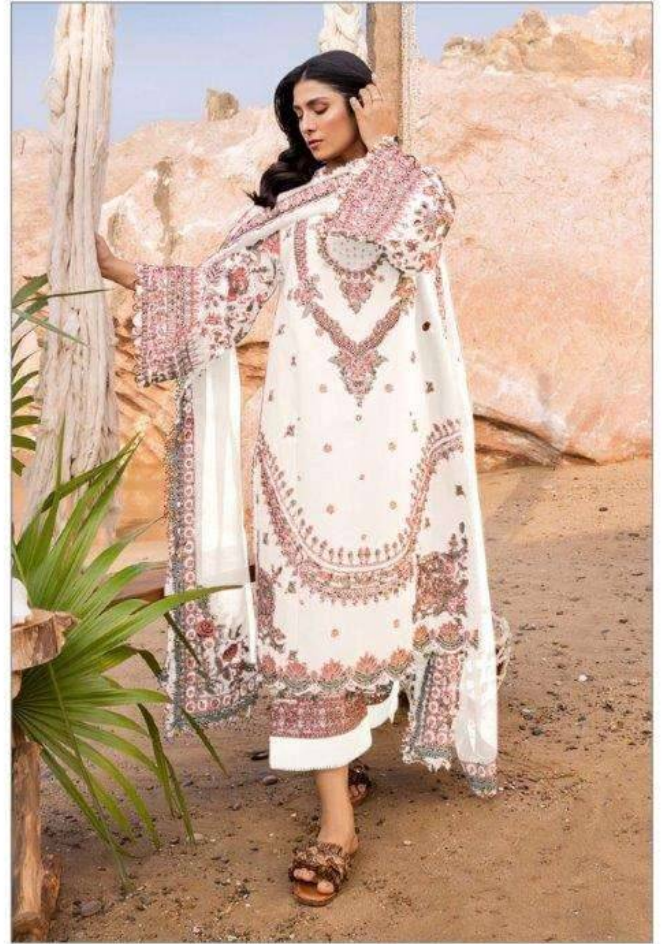
TOP - Rayon With Embroidery Work

DUPATTA- Nazmeen with Embroidery

BOTTOM - Rayon

CARE INTRUCTIONS

- DRY CLEAN RECOMMENDED
- DO NOT OVEREXPOSE DAMP FABRIC TO STRONG SUNLIGHT
- DO NOT USE ANYTYPE OF BLEACH OR STAIN REMOVING CHEMICALS
- IRON AT MODERATE TEMPERATURE





D.NO.266 D

Sadaf Fawad
Vol-1



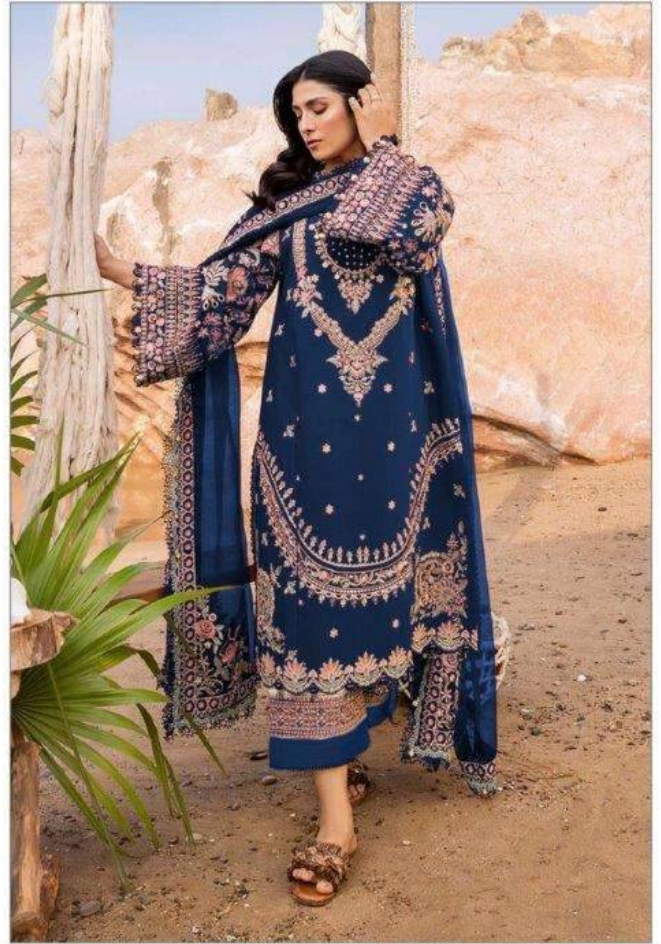
TOP - Rayon With Embroidery Work

DUPATTA- Nazmeen with Embroidery

BOTTOM - Rayon

CARE INTRUCTIONS

- DRY CLEAN RECOMMENDED
- DO NOT OVEREXPOSE DAMP FABRIC TO STRONG SUNLIGHT
- DO NOT USE ANYTYPE OF BLEACH OR STAIN REMOVING CHEMICALS
- IRON AT MODERATE TEMPERATURE





Sadaf Fawad Vol-1

TOP - Rayon With Embroidery Work

DUPATTA- Nazmeen with Embroidery

BOTTOM - Rayon



D.No 266-A



D.No 266-B



D.No 266-C



D.No 266-D