

**BOLD EXPRESSION**

*It's how fashion meets fabrics and colors in ways for showcasing the vibrance of one's soul.*

*Heer*

9452



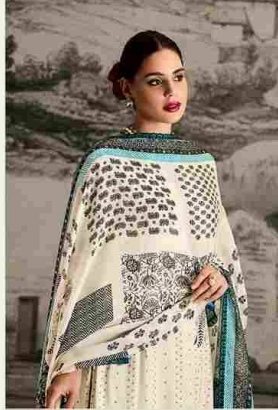
HEER



URBAN EDGE

*The pulsating energy of life is captured in dynamic strokes that speak the language of the streets.*

9451



**BOLD EXPRESSION**

*It's how fashion meets fabrics and colors in ways for showcasing the vibrance of one's soul.*

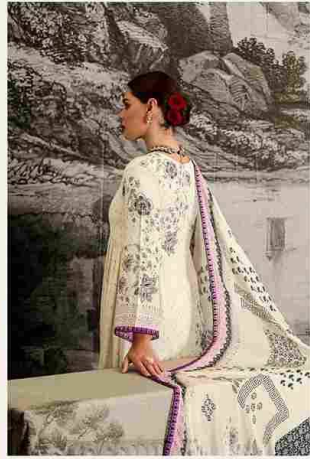
*Heer*

9452





HEER



VINTAGE CHARM

*A world of the past, where even the most ancient stories of legend come into the fabric of the present.*

9454



Heer

CHIC SIMPLICITY

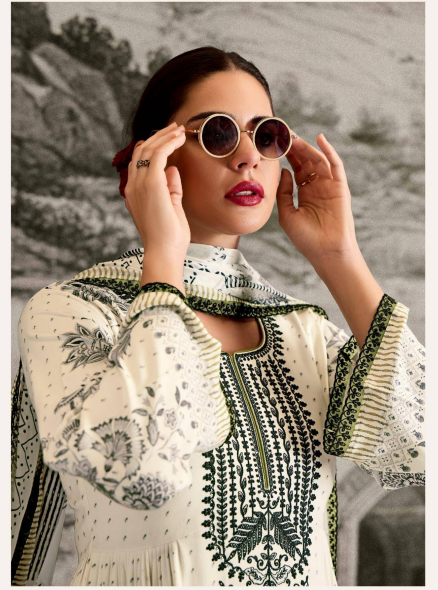
*A chic and simple design in simple cut, where it is simple in cut and minimalist design with sophisticated.*

9455





HEER



ETHEREAL BEAUTY

*Exquisite that float with an ethereal fabric grace, creating silhouettes that dance between dreams and reality.*

9456

HEER



9451



9452



9453

ISHQA



9454



9455



9456



# ISHQA

## TOP

PURE MUSLIN WITH DIGITAL PRINT, DORI PLACEMENT EMBROIDERY ON FRONT AND SLEEVES WITH SCALLOPED EMBROIDERY BORDER

## DUPATTA

PURE CHINNON WITH DIGITAL PRINT AND SCALLOPED DORI EMBROIDERY BORDER

## BOTTOM

PURE MUSLIN WITH DORI EMBROIDERY

*Heer*  
BY KIMORA

