



FLORENT<sup>®</sup>

D.no-1019-B



**TOP** - 9000 VELVET WITH HEAVY EMBROIDERY

**BOTTOM** - 9000 VELVET WITH HEAVY EMBROIDERY

**DUPATTA** - 9000 VELVET WITH HEAVY EMBROIDERY



FLORENT<sup>®</sup>

D.no-1019-A



**TOP** - 9000 VELVET WITH HEAVY EMBROIDERY

**BOTTOM** - 9000 VELVET WITH HEAVY EMBROIDERY

**DUPATTA** - 9000 VELVET WITH HEAVY EMBROIDERY



**FLORENT<sup>®</sup>**

**D.no-1019-B**



**TOP** - 9000 VELVET WITH HEAVY EMBROIDERY

**BOTTOM** - 9000 VELVET WITH HEAVY EMBROIDERY

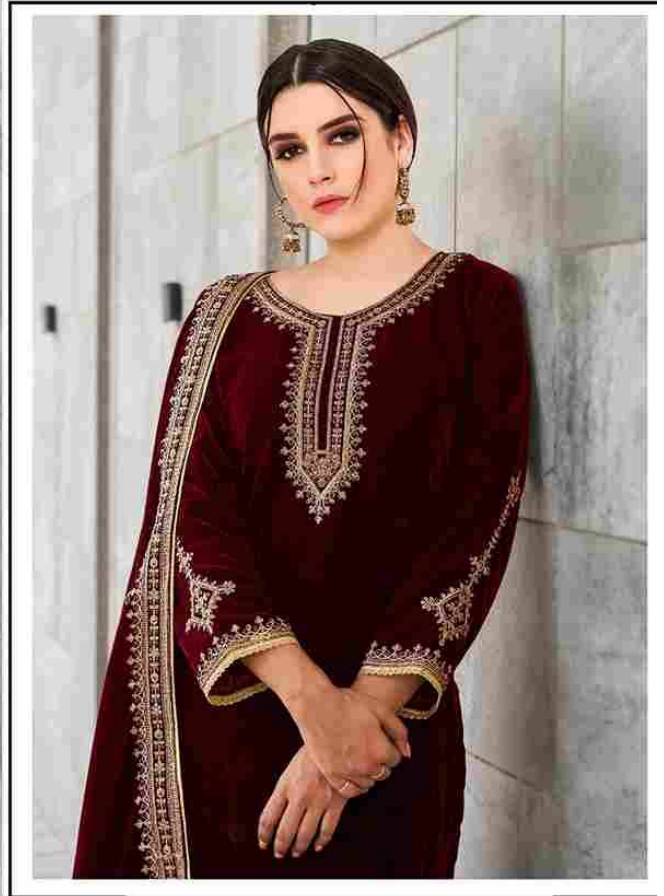
**DUPATTA** - 9000 VELVET WITH HEAVY EMBROIDERY





FLORENT<sup>®</sup>

D.no-1019-C



**TOP** - 9000 VELVET WITH HEAVY EMBROIDERY

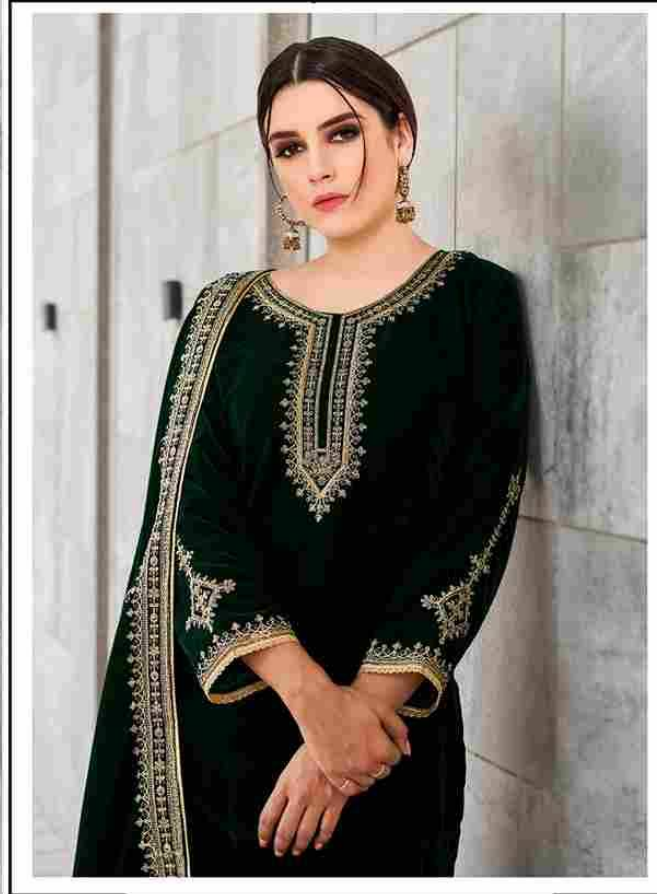
**BOTTOM** - 9000 VELVET WITH HEAVY EMBROIDERY

**DUPATTA** - 9000 VELVET WITH HEAVY EMBROIDERY



FLORENT<sup>®</sup>

D.no-1019-D



**TOP** - 9000 VELVET WITH HEAVY EMBROIDERY

**BOTTOM** - 9000 VELVET WITH HEAVY EMBROIDERY

**DUPATTA** - 9000 VELVET WITH HEAVY EMBROIDERY

FLORENT®



D.NO.1019-A



D.NO.1019-B



D.NO.1019-C



D.NO.1019-D