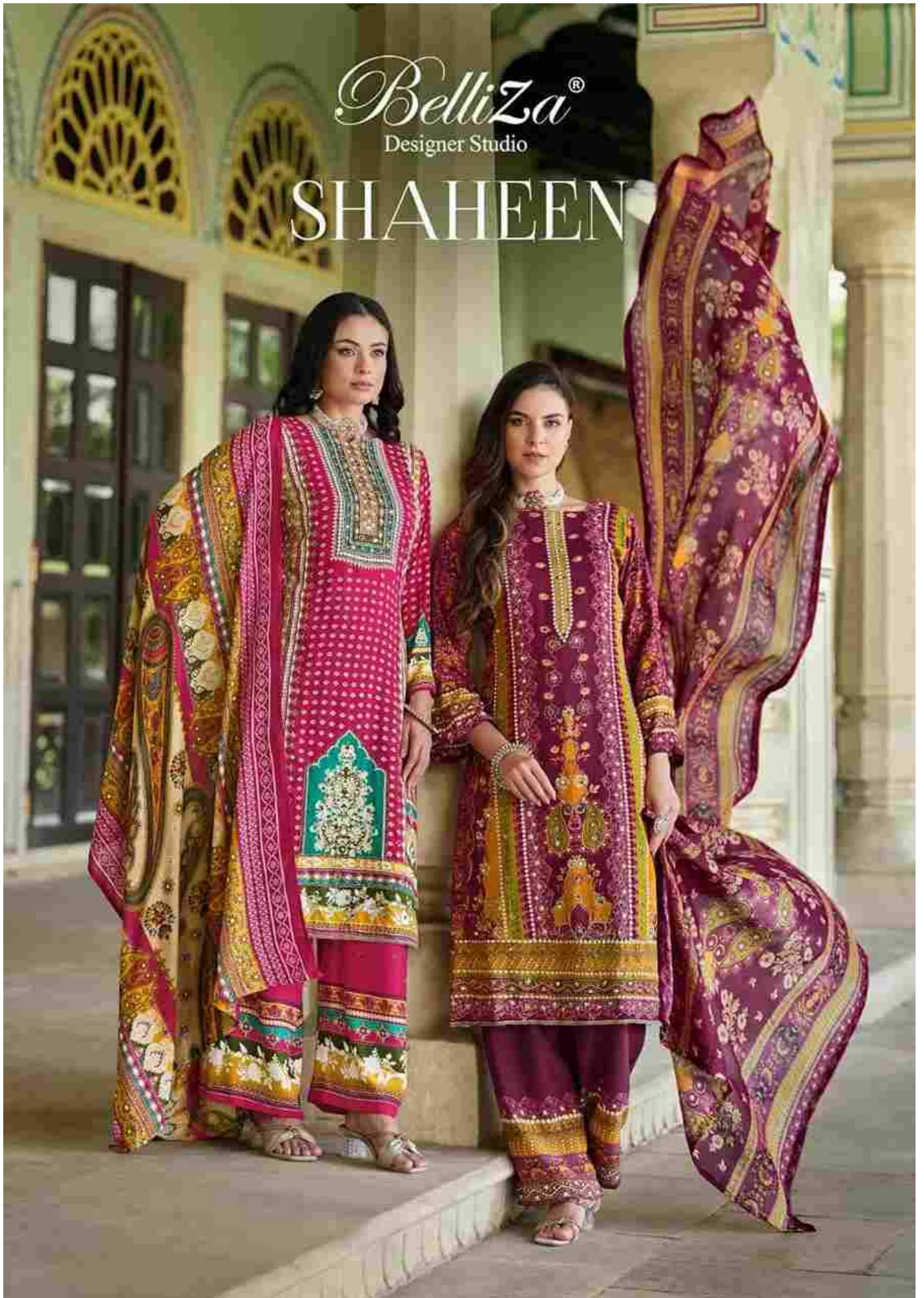
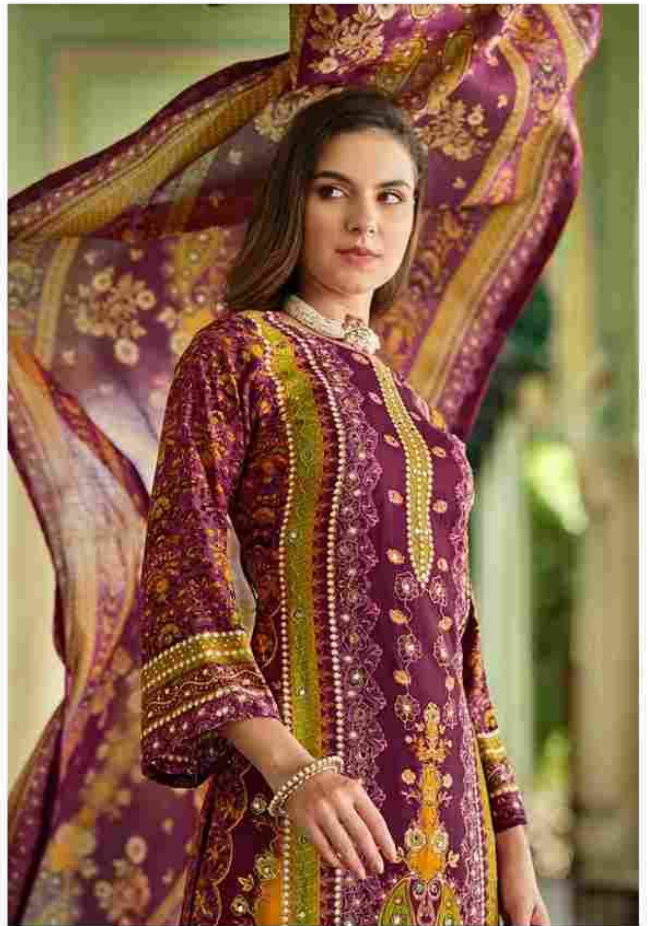
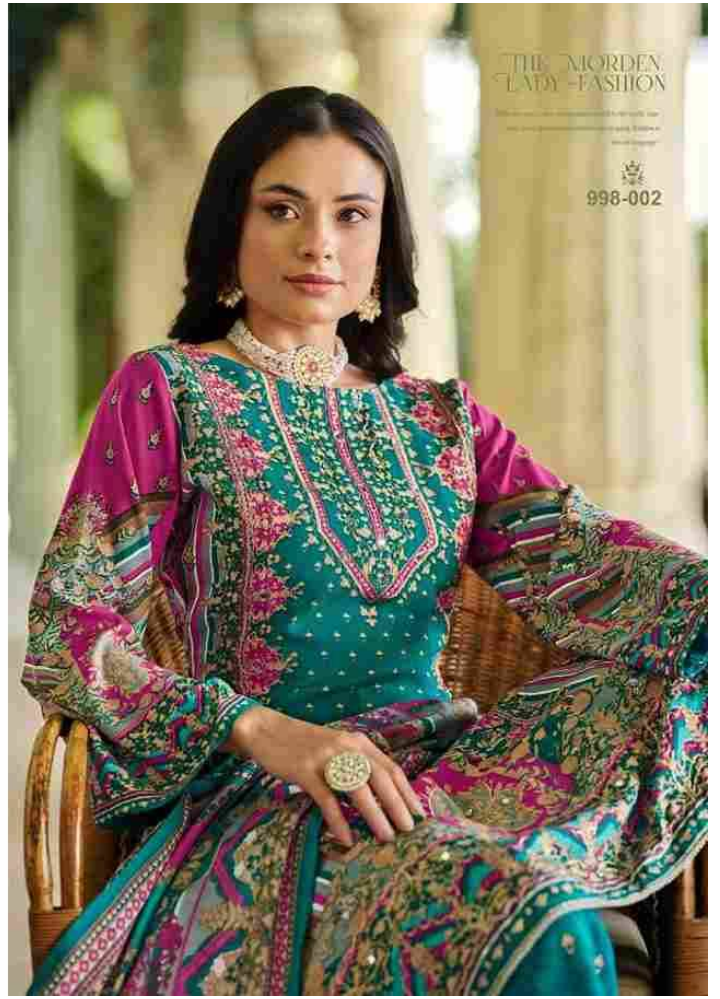


BelliZa[®]
Designer Studio

SHAHEEN







THE MODERN
LADY FASHION

"What you wear is how you present yourself to the world. It's not only what you wear, but how you wear it, that makes a woman a woman."



998-003







998-006



DIFFERENT STYLE
What you wear is how you present yourself to the world, especially when you're in a public place. Fashion is a statement.



B

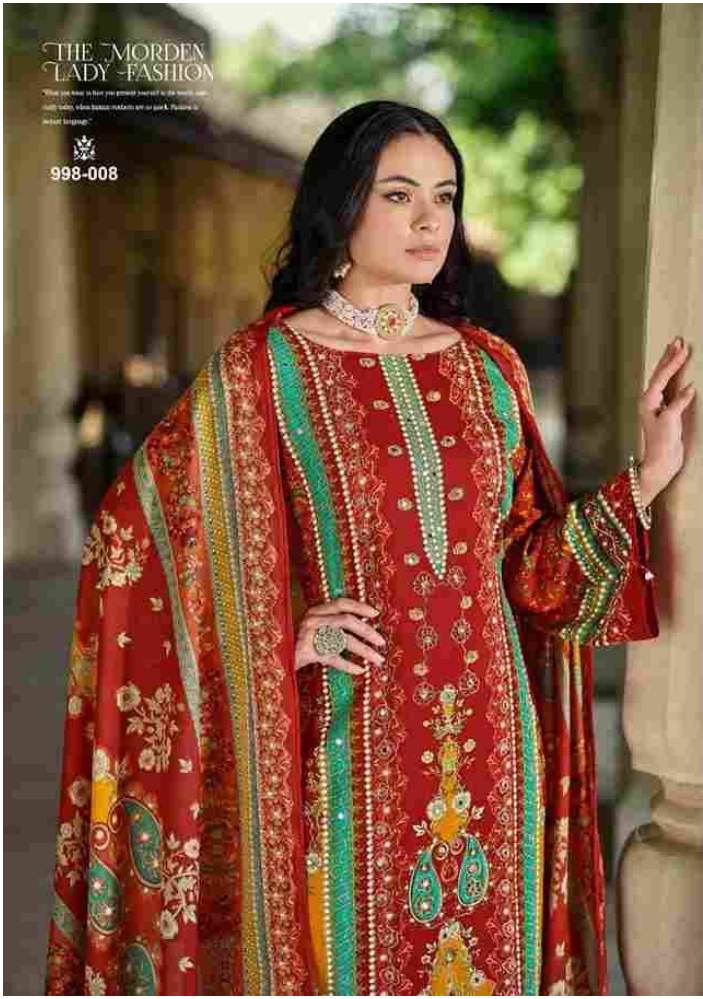


DIFFERENT
DIRCTION

"What you wear is how you present yourself to the world, and
what you wear tells the world who you are and what you value."



998-007





SHAHEEN



998-001



998-002



998-003



998-004



998-005



998-006



998-007



998-008