

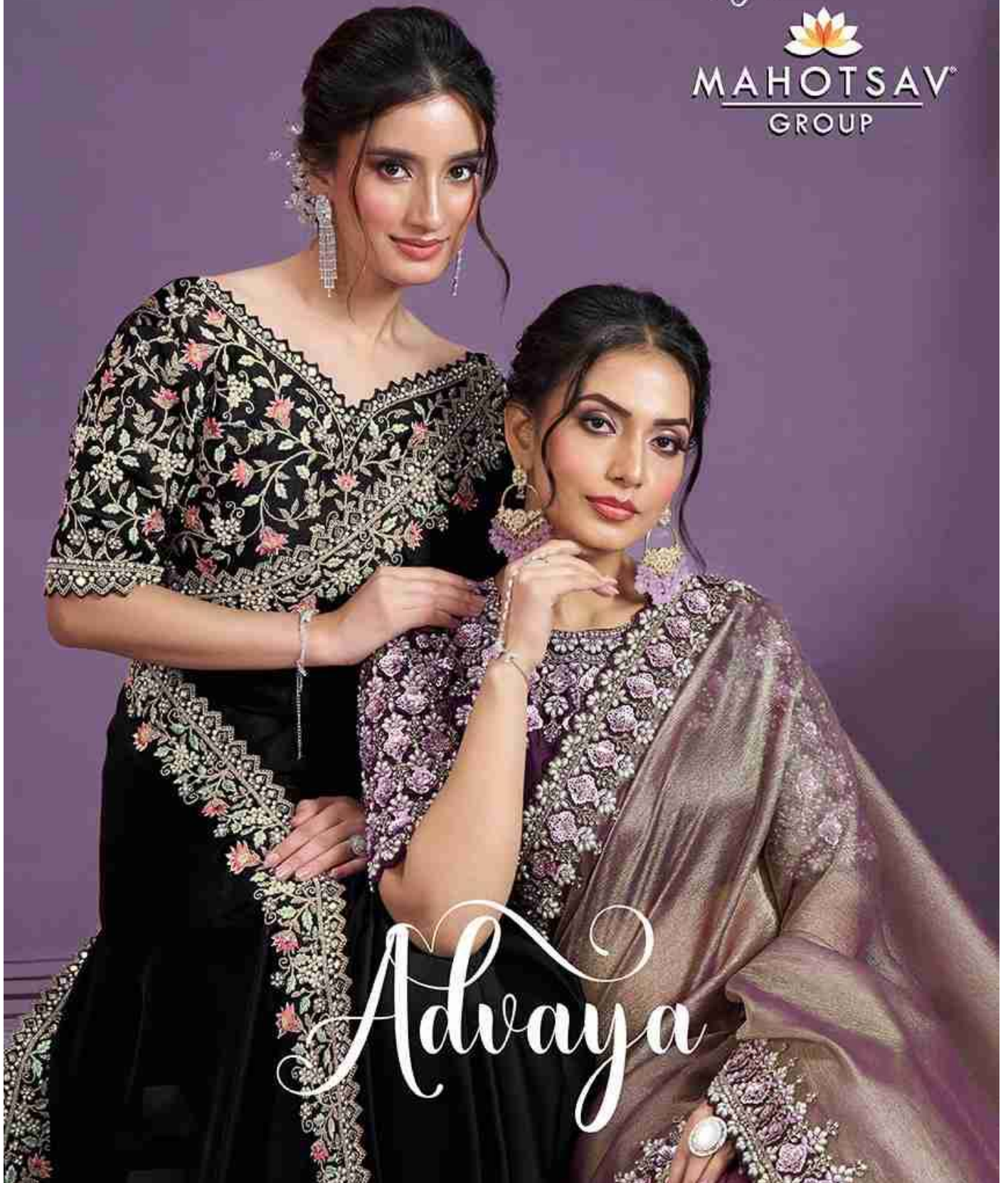


MOHMANTHAN™

Royal



MAHOTSAV™
GROUP



Advaya



24804
FABRIC: TWO TONE SATIN SILK
BLOUSE: HAND WORK EMBROIDERED

The fabric used in the ADVAYA collection is soft and SMOOTH, with a shiny look that gives you comfort and style all at once.



24805
FABRIC : TWO TONE SATIN SILK
BLOUSE : HAND WORK EMBROIDERED

Every SAREE is thoughtfully crafted, WITH FINE details in the EMBROIDERY and carefully placed SEQUINS that catch the LIGHT beautifully.



24806
FABRIC : PURE BANARASI CRUSH
BLOUSE : HAND WORK EMBROIDERED



24807
FABRIC : TWO TONE SATIN SILK
BLOUSE : HAND WORK EMBROIDERED



24808
FABRIC : CREPE SATIN SILK CRUSH
BLOUSE : HAND WORK EMBROIDERED



24809
FABRIC : TWO TONE SATIN SILK
BLOUSE : HAND WORK EMBROIDERED



24810
FABRIC : SATIN SILK
BLOUSE : HAND WORK EMBROIDERED



24811
FABRIC : PURE BANARASI CRUSH
BLOUSE : HAND WORK EMBROIDERED

WHEN you
wear ADVAYA,
you are wearing something
special, created with care
and attention to detail.



24812
FABRIC : GLASS TISSUE
BLOUSE : HAND WORK EMBROIDERED

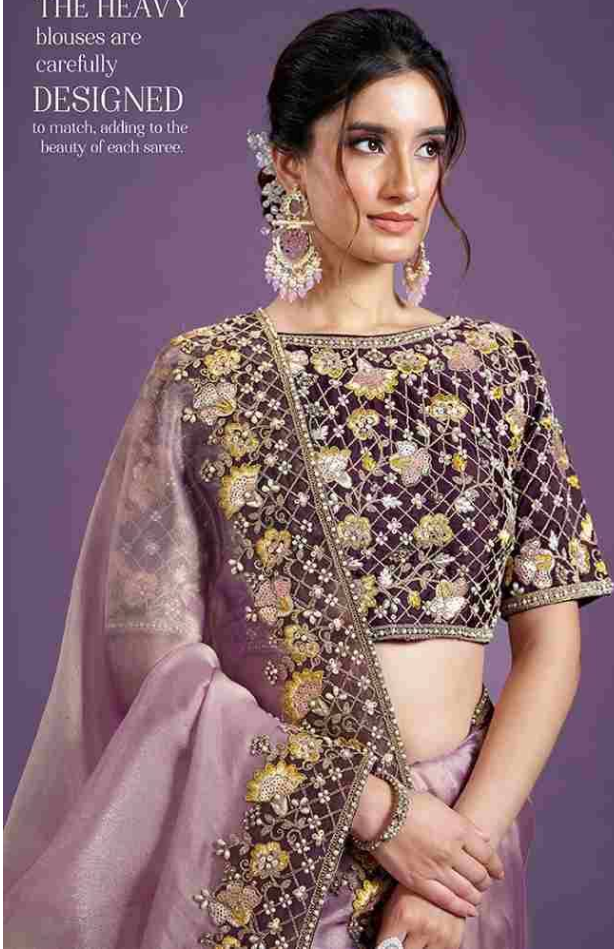


24813
FABRIC : PURE BANARASI CRUSH
BLOUSE : HAND WORK EMBROIDERED



24814
FABRIC : TWO TONE SATIN SILK
BLOUSE : HAND WORK EMBROIDERED

THE HEAVY
blouses are
carefully
DESIGNED
to match, adding to the
beauty of each saree.



24815
FABRIC : GLASS TISSUE
BLOUSE : HAND WORK EMBROIDERED



24804



24805



24806



24807



24808



24814



24815



24816



24809



24810



24811



24812



24813


MAHOTSAV
 GROUP

MOHMANTHAN™
Regd.
Advaya

DESIGN NO	SAREE FABRIC	BLOUSE FABRIC	WORK	Belt	SAREE TYPE	CUSTZ.(SEMISTITCH/UN-STITCH)	BLOUSE SIZE	REMARK
24804	Two Tone Satin Silk	Satin Silk	Sequence with Moti Work	-	Regular	Unstitched Blouse	0.80 mtr	The first wash of the garment should always be Dry-Cleaned.
24805	Two Tone Satin Silk	Satin Silk	Sequence with Hand Work	-	Regular	Unstitched Blouse	0.80 mtr	The first wash of the garment should always be Dry-Cleaned.
24806	Pure Banarasi Crush	Raw Silk	Sequence with Moti Work	-	Regular	Unstitched Blouse	0.80 mtr	The first wash of the garment should always be Dry-Cleaned.
24807	Two Tone Satin Silk	Japan Satin Silk	Sequence with Hand Work	-	Regular	Unstitched Blouse	0.80 mtr	The first wash of the garment should always be Dry-Cleaned.
24808	Crepe Satin Silk Crush	Malai Satin Silk	Sequence with Diamond Work	-	Regular	Unstitched Blouse	0.80 mtr	The first wash of the garment should always be Dry-Cleaned.
24809	Two Tone Satin Silk	Satin Silk	Sequence with Moti Work	-	Regular	Unstitched Blouse	0.80 mtr	The first wash of the garment should always be Dry-Cleaned.
24810	Satin Silk	Japan Satin Silk	Real Mirror With Moti Work	-	Regular	Unstitched Blouse	0.80 mtr	The first wash of the garment should always be Dry-Cleaned.
24811	Pure Banarasi Crush	Malai Satin Silk	Sequence with Moti Work	-	Regular	Unstitched Blouse	0.80 mtr	The first wash of the garment should always be Dry-Cleaned.
24812	Glass Tissue	Malai Satin Silk	Sequence with Patch Work	-	Regular	Unstitched Blouse	0.80 mtr	The first wash of the garment should always be Dry-Cleaned.
24813	Pure Banarasi Crush	Malai Satin Silk	Moti work	-	Regular	Unstitched Blouse	0.80 mtr	The first wash of the garment should always be Dry-Cleaned.
24814	Two Tone Satin Silk	taffeta silk	Sequence with Moti Work	-	Regular	Unstitched Blouse	0.80 mtr	The first wash of the garment should always be Dry-Cleaned.
24815	Glass Tissue	Malai Satin Silk	Sequence with Moti Work	-	Regular	Unstitched Blouse	0.80 mtr	The first wash of the garment should always be Dry-Cleaned.
24816	Crepe Satin Silk Crush	Malai Satin Silk	Sequence with Hand Work	-	Regular	Unstitched Blouse	0.80 mtr	The first wash of the garment should always be Dry-Cleaned.