

KIMORA[®]

Sajda





intricate lacework adorned the bodice, delicate gathering defining femininity

KIMORA

● 2232 ●

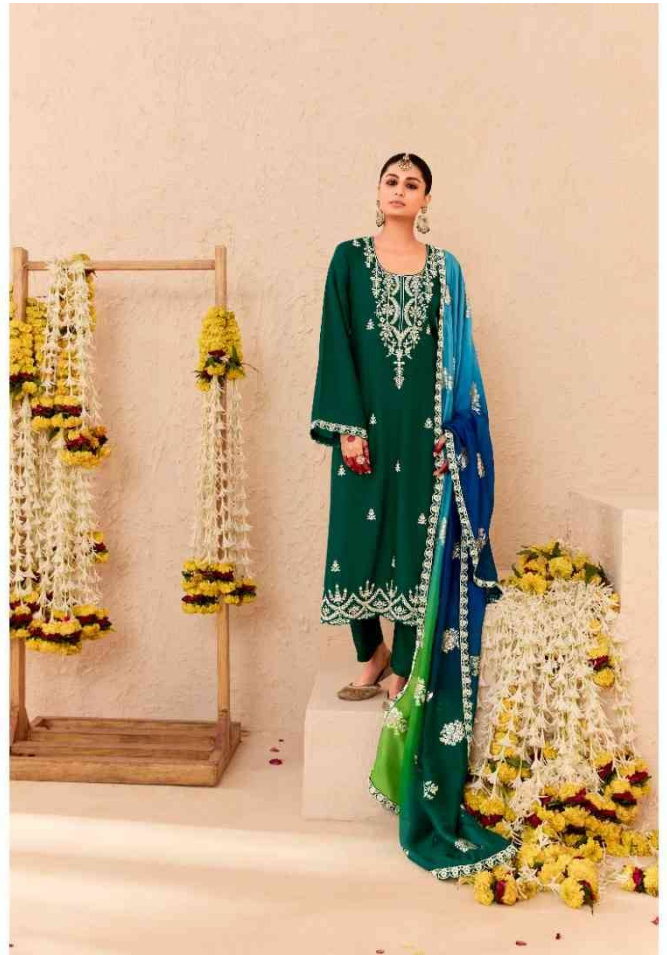




intricate lacework adorned the bodice. delicate patterns entwining seamlessly

KIMORA

● 2233 ●





Intricate lacework adorned the bodice, delicate patterns shimmering exquisitely

KIMORA

● 2234 ●



KIMORO

• 2235



The dress was adorned with sparkling sequins that shimmered in the spotlight

KIMONO



Clothing: A dress is a type of clothing, typically worn by women and girls. It is a one-piece garment that covers the body from the shoulders to the feet. Dresses come in various styles, lengths, and designs, and they are often chosen based on the occasion or personal preference.

● 2236 ●



kimora



● 2231 ●

● 2232 ●

● 2233 ●

Sajda



● 2234 ●

● 2235 ●

● 2236 ●

Sajda

TOP

PURE BAMBER SILK WITH
PEARL DORI EMBROIDERY

DUPATTA

PURE KORA SILK WEAVING WITH 4D DYEING AND
SCALLOPED PEARL DORI EMBROIDERY BORDER

BOTTOM

PURE BAMBER SILK

KIMORA[®]

