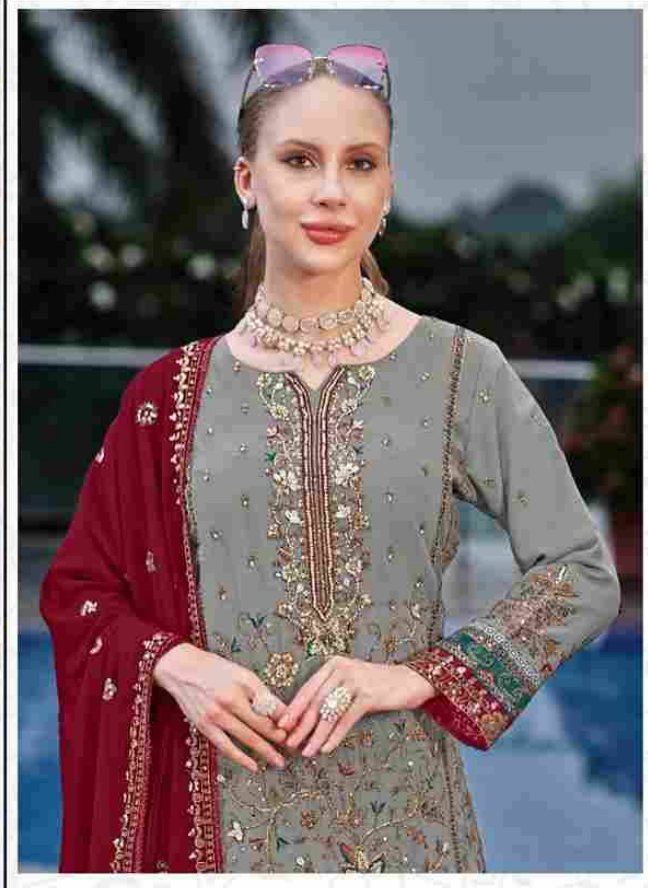




**Motifz**  
FASHION FORWARD  
**D.no-771-B**



**TOP - ORGANZA WITH EMBROIDERY  
KHATLI WORK**

**BOTTOM - DULL SANTOON**

**DUPATTA - ORGANZA WITH EMBROIDERY**



**Motifz**  
FASHION FORWARD  
**D.no-771-A**



**TOP - ORGANZA WITH EMBROIDERY  
KHATLI WORK**

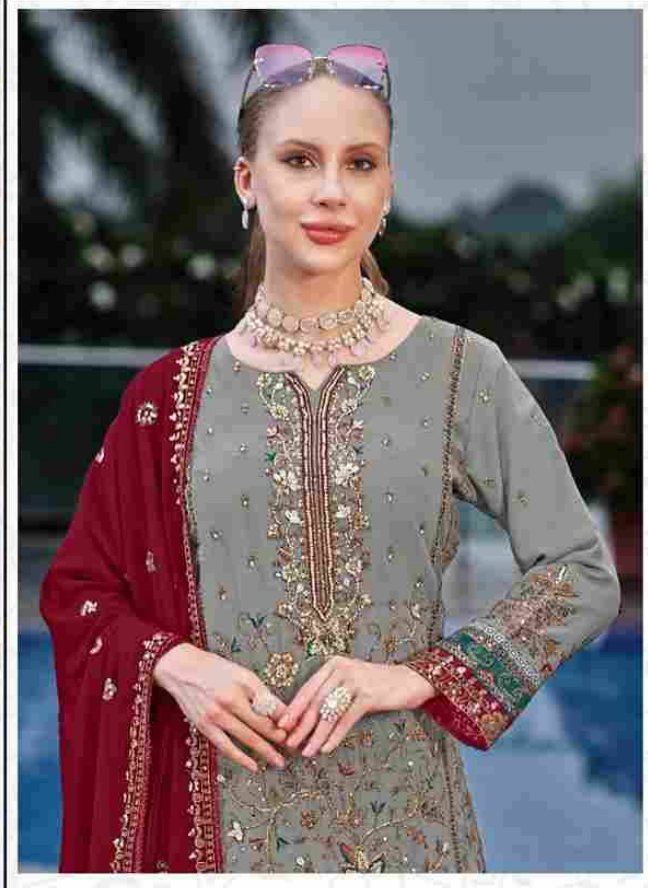
**BOTTOM - DULL SANTOON**

**DUPATTA - ORGANZA WITH EMBROIDERY**





**Motifz**  
FASHION FORWARD  
**D.no-771-B**



**TOP - ORGANZA WITH EMBROIDERY  
KHATLI WORK**

**BOTTOM - DULL SANTOON**

**DUPATTA - ORGANZA WITH EMBROIDERY**



**TOP - ORGANZA WITH EMBROIDERY  
KHALTI WORK**

**BOTTOM - DULL SANTOON**

**DUPATTA - ORGANZA WITH EMBROIDERY**





**Motifz**  
FASHION FORWARD  
**D.no-771-D**



**TOP - ORGANZA WITH EMBROIDERY  
KHALTI WORK**

**BOTTOM - DULL SANTOON**

**DUPATTA - ORGANZA WITH EMBROIDERY**



TOP - ORGANZA WITH EMBROIDERY  
KHATLI WORK  
BOTTOM - DULL SANTOON  
DUPATTA - ORGANZA WITH EMBROIDERY



D.NO.771-A



D.NO.771-B



D.NO.771-C



D.NO.771-D

