



Motifz
FASHION FORWARD

D.no-789-B



**TOP- ORGANZA WITH EMBROIDERY
WITH KHATLI WORK**

BOTTOM- DULL SANTOON PATCH WORK

DUPATTA- ORGANZA WITH EMROIDERY



Motifz
FASHION FORWARD

D.no-789-A



TOP- ORGANZA WITH EMBROIDERY
WITH KHATLI WORK

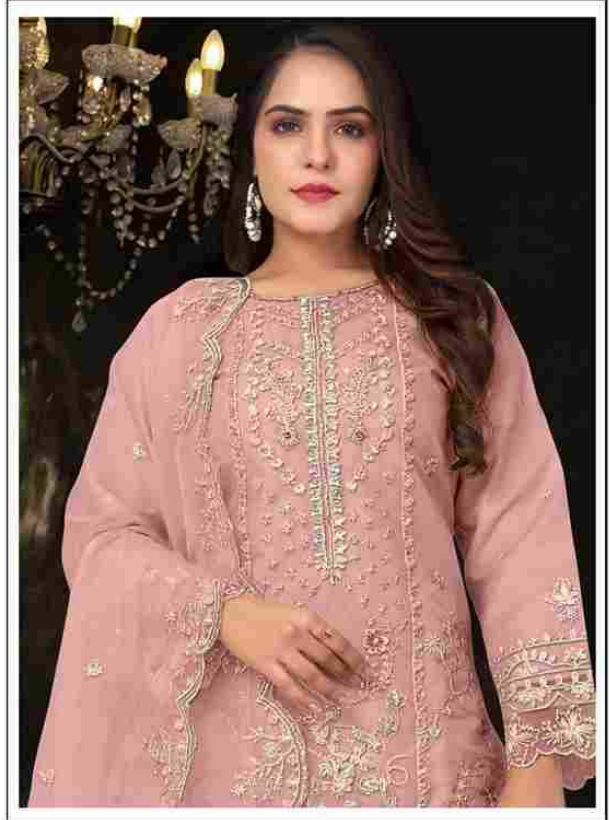
BOTTOM- DULL SANTOON PATCH WORK

DUPATTA- ORGANZA WITH EMBROIDERY



Motifz
FASHION FORWARD

D.no-789-B



**TOP- ORGANZA WITH EMBROIDERY
WITH KHATLI WORK**

BOTTOM- DULL SANTOON PATCH WORK

DUPATTA- ORGANZA WITH EMROIDERY

Motifz
FASHION FORWARD

D.no-789-C



**TOP- ORGANZA WITH EMBROIDERY
WITH KHATLI WORK**

BOTTOM- DULL SANTOON PATCH WORK

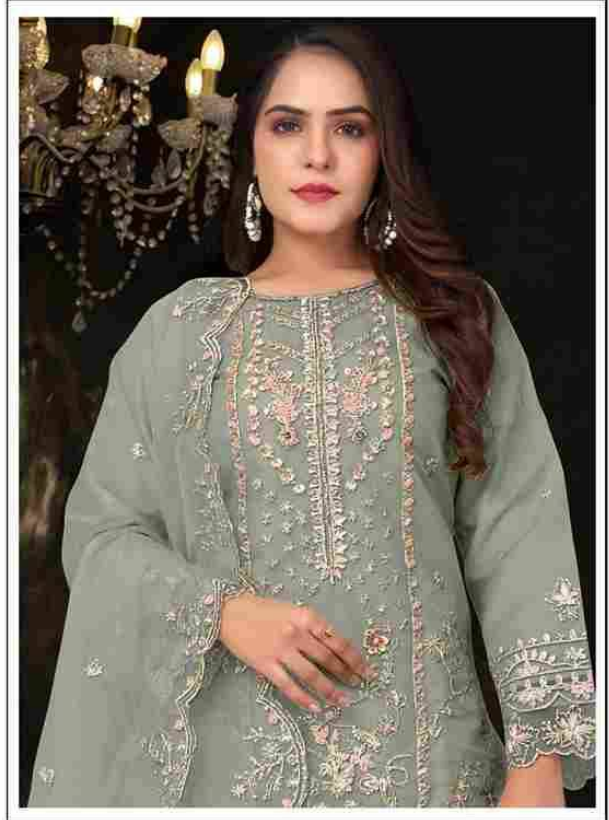
DUPATTA- ORGANZA WITH EMROIDERY





Motifz
FASHION FORWARD

D.no-789-D



**TOP- ORGANZA WITH EMBROIDERY
WITH KHATLI WORK**

BOTTOM- DULL SANTOON PATCH WORK

DUPATTA- ORGANZA WITH EMROIDERY



D.no-789 A



D.no-789 B



D.no-789 C



D.no-789 D