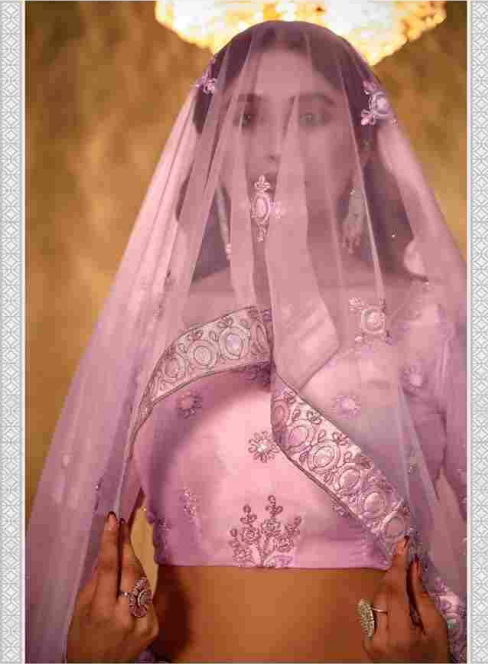




Feva

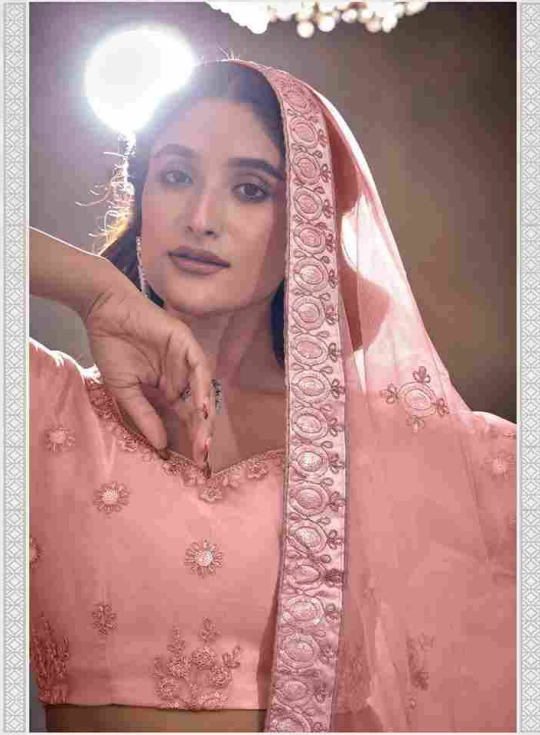
Vol-02



1002 A



ॐ



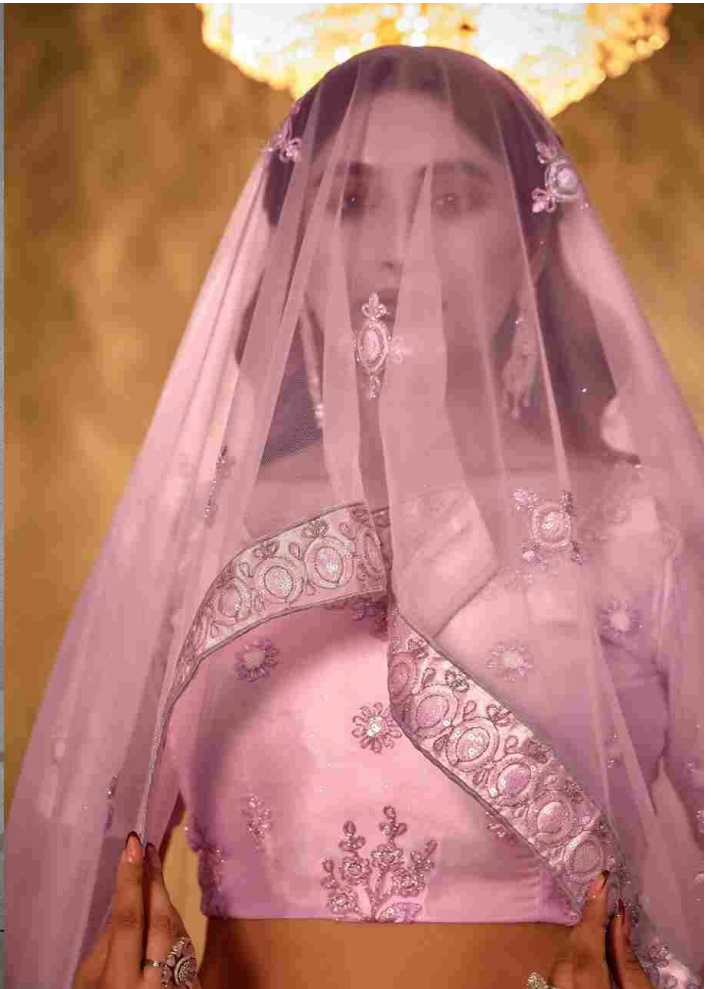
1002 B



Et



1002 D





Zeva Vol-02



1002 A



1002 B



1002 C



1002 D

Design NO. (SKU)	Main Color	Lehenga Fabric	Choli Fabric	Dupatta Fabric	Size (Semi-Stitched)	Lehenga & Choli	Dupatta Work	Choli Length MTR	Lehenga Length MTR	Dupatta Length MTR	Weight
1002-A	LIGHT LAVENDER	BUTTERFLY NET WITH SATIN INNER	BUTTERFLY NET WITH SATIN INNER	BUTTERFLY NET	UPTO 42 BUST AND WAIST	Thread With Sequince Embroidered Work	Thread With Sequince Embroidered Work	1 MTR	42 INCH	2.30 MTR	1.5 KG
1002-B	PEACH	BUTTERFLY NET WITH SATIN INNER	BUTTERFLY NET WITH SATIN INNER	BUTTERFLY NET	UPTO 42 BUST AND WAIST	Thread With Sequince Embroidered Work	Thread With Sequince Embroidered Work	1 MTR	42 INCH	2.30 MTR	1.5 KG
1002-C	TURQUOISE	BUTTERFLY NET WITH SATIN INNER	BUTTERFLY NET WITH SATIN INNER	BUTTERFLY NET	UPTO 42 BUST AND WAIST	Thread With Sequince Embroidered Work	Thread With Sequince Embroidered Work	1 MTR	42 INCH	2.30 MTR	1.5 KG
1002-D	LIPGLOSS PINK	BUTTERFLY NET WITH SATIN INNER	BUTTERFLY NET WITH SATIN INNER	BUTTERFLY NET	UPTO 42 BUST AND WAIST	Thread With Sequince Embroidered Work	Thread With Sequince Embroidered Work	1 MTR	42 INCH	2.30 MTR	1.5 KG