

**Motifz**  
FASHION FORWARD

D.no-823-B



**TOP- ORGANZA WITH EMBROIDERY  
Khatli Work**

**BOTTOM- DULL SANTOON PATCH WORK**

**DUPATTA- ORGANZA WITH EMBROIDERY**

**Motifz**  
FASHION FORWARD

D.no-823-A



**TOP- ORGANZA WITH EMBROIDERY  
Khatli Work**

**BOTTOM- DULL SANTOON PATCH WORK**

**DUPATTA- ORGANZA WITH EMBROIDERY**

**Motifz**  
FASHION FORWARD

D.no-823-B



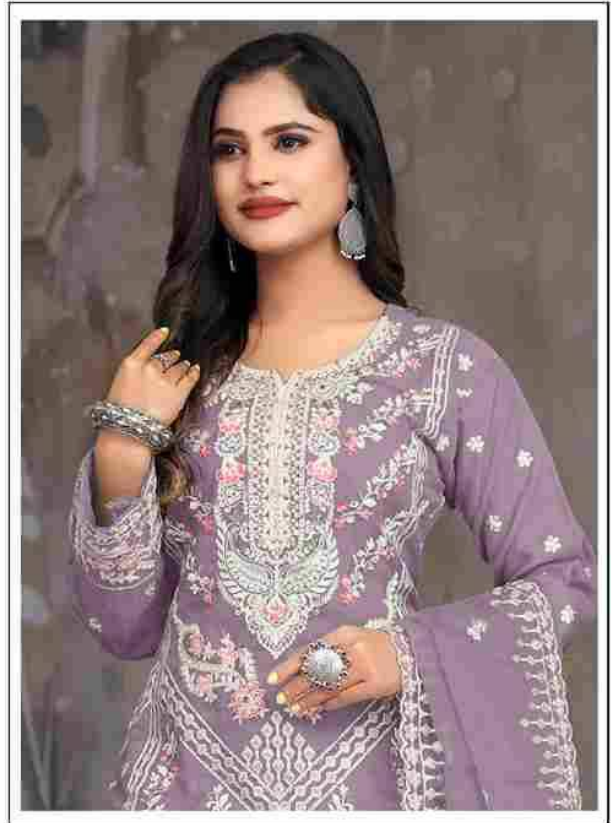
**TOP- ORGANZA WITH EMBROIDERY  
Khatli Work**

**BOTTOM- DULL SANTOON PATCH WORK**

**DUPATTA- ORGANZA WITH EMBROIDERY**

**Motifz**  
FASHION FORWARD

D.no-823-C



**TOP- ORGANZA WITH EMBROIDERY  
Khatli Work**

**BOTTOM- DULL SANTOON PATCH WORK**

**DUPATTA- ORGANZA WITH EMBROIDERY**

**Motifz**  
FASHION FORWARD

D.no-823-D



**TOP- ORGANZA WITH EMBROIDERY  
Khatli Work**

**BOTTOM- DULL SANTOON PATCH WORK**

**DUPATTA- ORGANZA WITH EMBROIDERY**



D.no-823 A



D.no-823 B



D.no-823 C



D.no-823 D