

Motifz<sup>®</sup>  
FASHION FORWARD

D.no-851-B



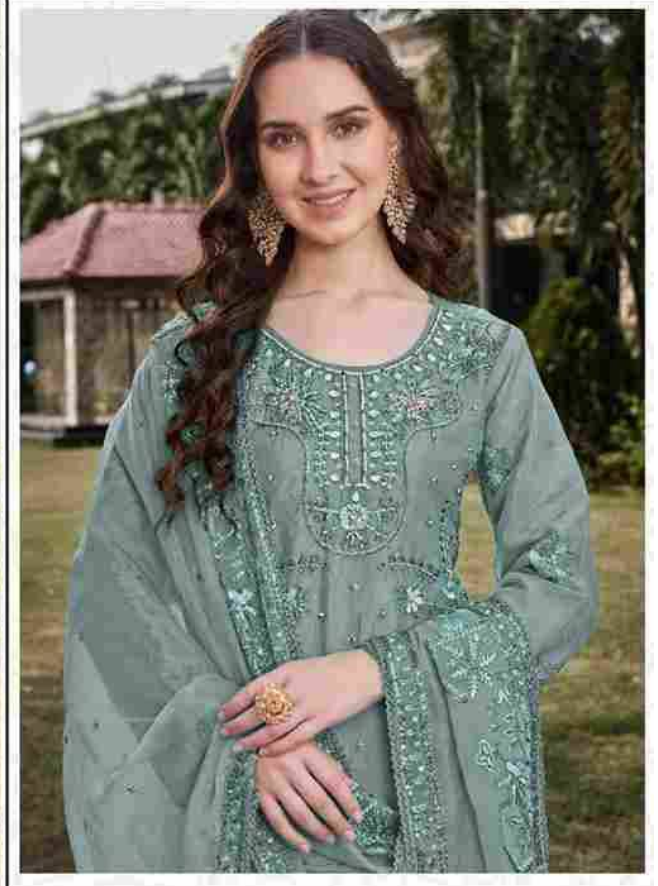
**TOP-** ORGANZA WITH EMBROIDERY KHATLI WORK

**BOTTOM-** DULL SANTOON PATCH WORK

**DUPATTA-** ORGANZA WITH EMBROIDERY

**Motifz**  
FASHION FORWARD

D.no-851-A



**TOP-** ORGANZA WITH EMBROIDERY KHATLI WORK

**BOTTOM-** DULL SANTOON PATCH WORK

**DUPATTA-** ORGANZA WITH EMBROIDERY



Motifz<sup>®</sup>  
FASHION FORWARD

D.no-851-B



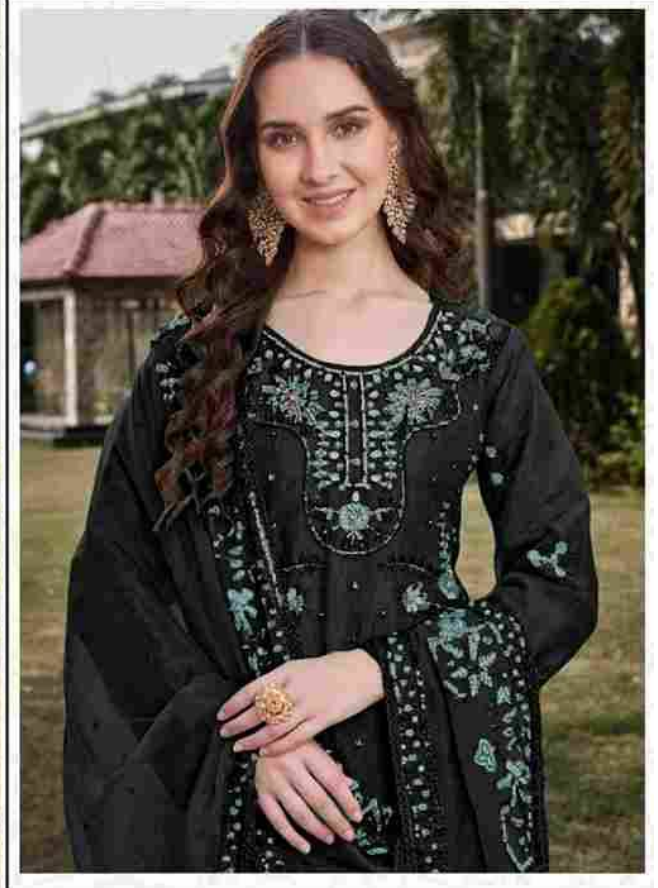
**TOP-** ORGANZA WITH EMBROIDERY KHATLI WORK

**BOTTOM-** DULL SANTOON PATCH WORK

**DUPATTA-** ORGANZA WITH EMBROIDERY

Motifz<sup>®</sup>  
FASHION FORWARD

D.no-851-C



**TOP-** ORGANZA WITH EMBROIDERY KHATLI WORK

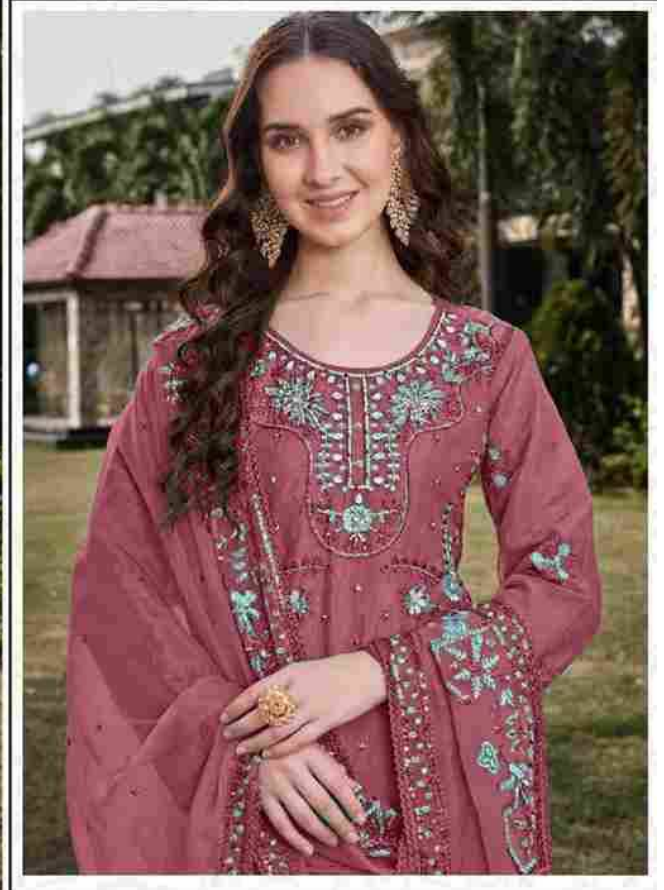
**BOTTOM-** DULL SANTOON PATCH WORK

**DUPATTA-** ORGANZA WITH EMBROIDERY



Motifz®  
FASHION FORWARD

D.no-851-D



**TOP-** ORGANZA WITH EMBROIDERY KHATLI WORK

**BOTTOM-** DULL SANTOON PATCH WORK

**DUPATTA-** ORGANZA WITH EMBROIDERY



D.no-851 A



D.no-851 B



D.no-851 C



D.no-851 D