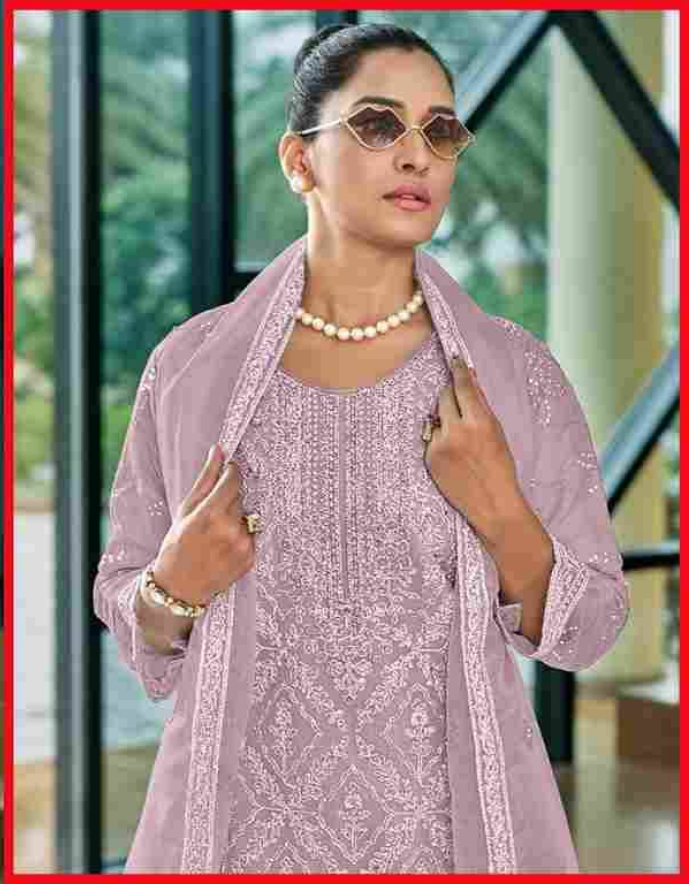




D.NO-105 B



**TOP** - ORGANAZA WITH EMBROIDRED WORK WITH ZARKAN WORK

**BOTTOM / INNER** - DULL SANTOUN WITH PACH WORK

**DUPATTA** - ORGANZA WITH EMBROIDRY WORK



D.NO-105 A



**TOP-ORGANZA WITH EMBROIDRED WORK WITH ZARKAN WORK**

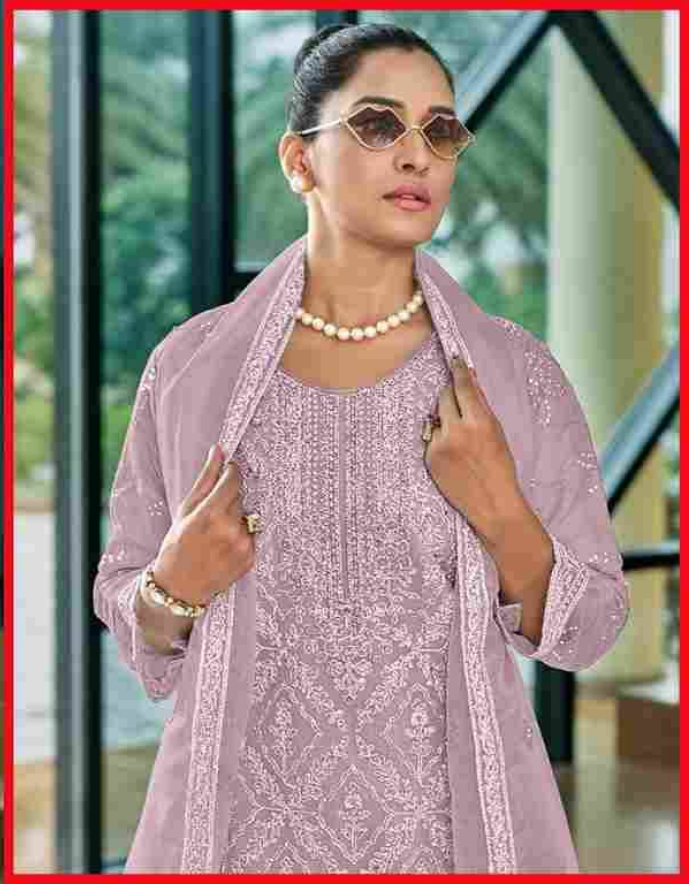
**BOTTOM / INNER -DULL SANTOUN WITH PACH WORK**

**DUPATTA -ORGANZA WITH EMBROIDRY WORK**





D.NO-105 B



**TOP** - ORGANZA WITH EMBROIDRED WORK WITH ZARKAN WORK

**BOTTOM / INNER** - DULL SANTOUN WITH PACH WORK

**DUPATTA** - ORGANZA WITH EMBROIDRY WORK



D.NO-105 C



**TOP- ORGANAZA WITH EMBROIDRED WORK WITH ZARKAN WORK**

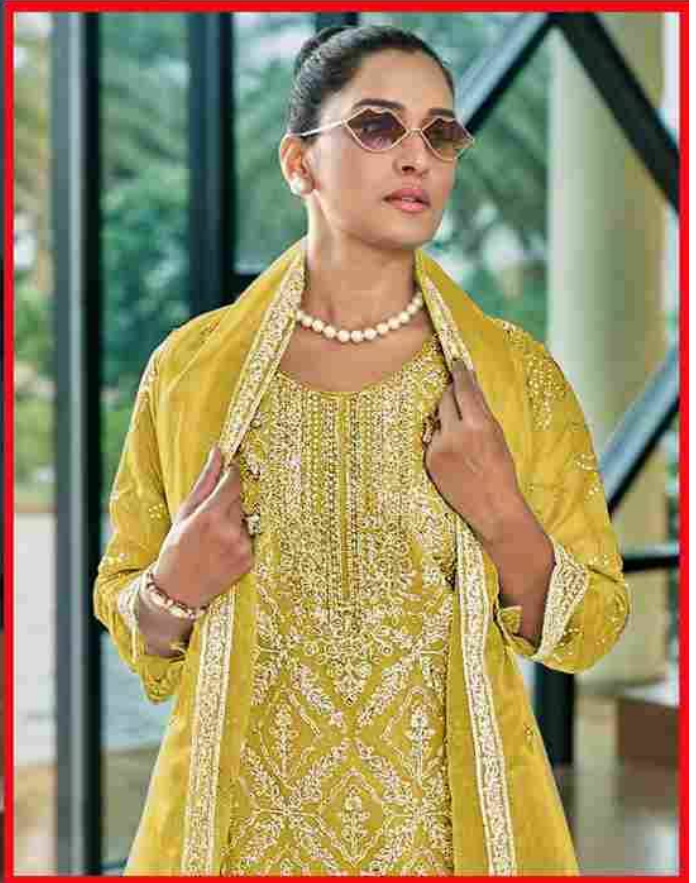
**BOTTOM / INNER - DULL SANTOUN WITH PACH WORK**

**DUPATTA - ORGANZA WITH EMBROIDRY WORK**





D.NO-105 D



TOP- ORGANAZA WITH EMBROIDRED WORK WITH ZARKAN WORK

BOTTOM / INNER -DULL SANTOUN WITH PACH WORK

DUPATTA - ORGANZA WITH EMBROIDRY WORK



TOP- ORGANAZA WITH EMBROIDRED WORK WITH ZARKAN WORK

BOTTOM / INNER -DULL SANTOUN WITH PACH WORK

DUPATTA - ORGANZA WITH EMBROIDRY WORK



D.NO-105 A



D.NO-105 B



D.NO-105 C



D.NO-105 D