



HOOR TEX



OR-65 B

Top :- Heavy Organza

Bottom/Inner :- Heavy Santoon

Dupatta :- Heavy Organza



☺ DRY CLEAN ONLY.
⚠ DO NOT USE ANY BLEACH OR STAIN REMOVING CHEMICAL.
🔪 IRON THE FABRIC AT MODERATE TEMPERATURE.



HOOR TEX



OR-65 A

Top :- Heavy Organza

Bottom/Inner :- Heavy Santoon

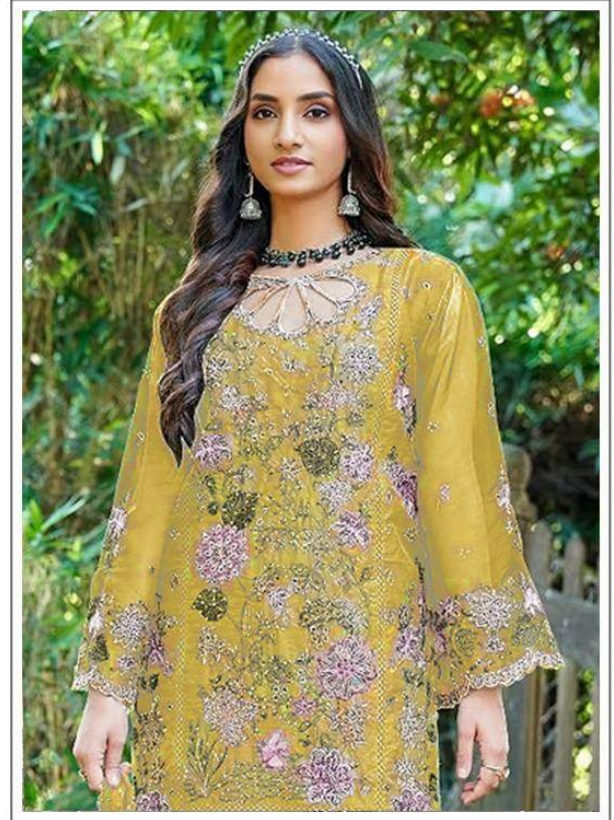
Dupatta :- Heavy Organza



☞ DRY CLEAN ONLY.
☞ DO NOT USE ANY BLEACH OR STAIN REMOVING CHEMICAL.
☞ IRON THE FABRIC AT MODERATE TEMPERATURE.



HOOR TEX



OR-65 B

Top :- Heavy Organza

Bottom/Inner :- Heavy Santoon

Dupatta :- Heavy Organza



☎ DRY CLEAN ONLY.
⚠ DO NOT USE ANY BLEACH OR STAIN REMOVING CHEMICAL.
🔧 IRON THE FABRIC AT MODERATE TEMPERATURE.



HOOR TEX



OR-65 C

Top :- Heavy Organza

Bottom/Inner :- Heavy Santoon

Dupatta :- Heavy Organza



☞ DRY CLEAN ONLY.
☞ DO NOT USE ANY BLEACH OR STAIN REMOVING CHEMICAL.
☞ IRON THE FABRIC AT MODERATE TEMPERATURE.



HOOR TEX



OR-65 D

Top :- Heavy Organza

Bottom/Inner :- Heavy Santoon

Dupatta :- Heavy Organza



☞ DRY CLEAN ONLY.
☞ DO NOT USE ANY BLEACH OR STAIN REMOVING CHEMICAL.
☞ IRON THE FABRIC AT MODERATE TEMPERATURE.



OR-65 A



OR-65 B



OR-65 C



OR-65 D



HOOR TEX